

Date: Thursday 19 March 2026
Time: 9.30am
Meeting Room: Tasman Council Chamber
Venue: 189 Queen Street, Richmond

Strategy Finance and Performance Committee

Komiti Rautaki me te Kaupapahere

MINUTES ATTACHMENTS

ITEM	PAGE
RSFP26-03-5 Presentation by Mr Tim Cadogan from Taumata Arowai	
Attachment 1 Tim Cadogan Presentation	2

PUBLIC FORUM: Council provides the opportunity for public forum input at its ordinary meetings. The views and opinions expressed in public forum do not necessarily reflect the position of the Tasman District Council, Council officers or elected members

Unclassified

Safe water every day for everyone

Kia tiakina te wai hei oranga mō te katoa

Introduction to our role and update on our mahi

Tim Cadogan – Engagement Specialist
Rachel East – Water Services Manager
Tasman District Council 19 March 2026



Safe water every day for everyone?

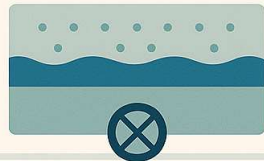
September 2025



Getting the basics in place



SOURCE WATER PROTECTION



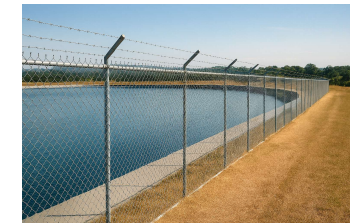
FILTRATION



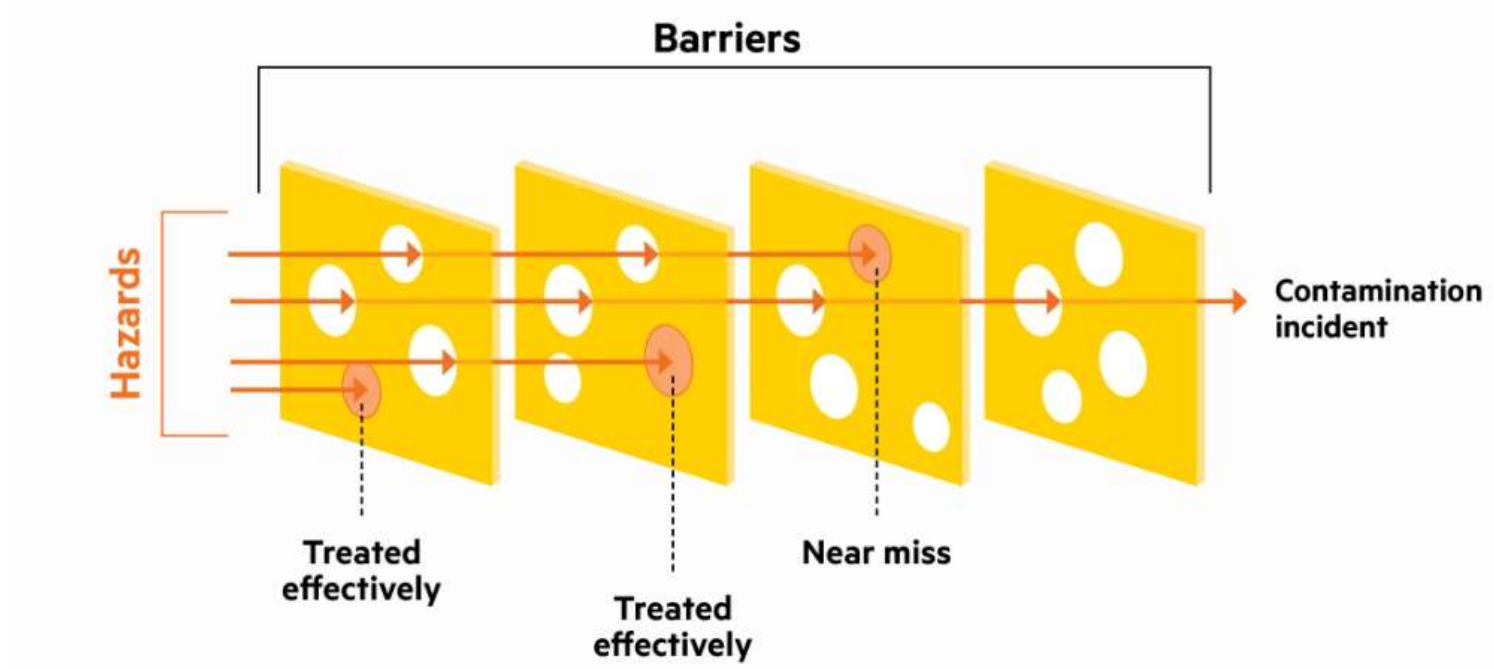
DISINFECTION



SECURE DISTRIBUTION



Multi-barrier protection



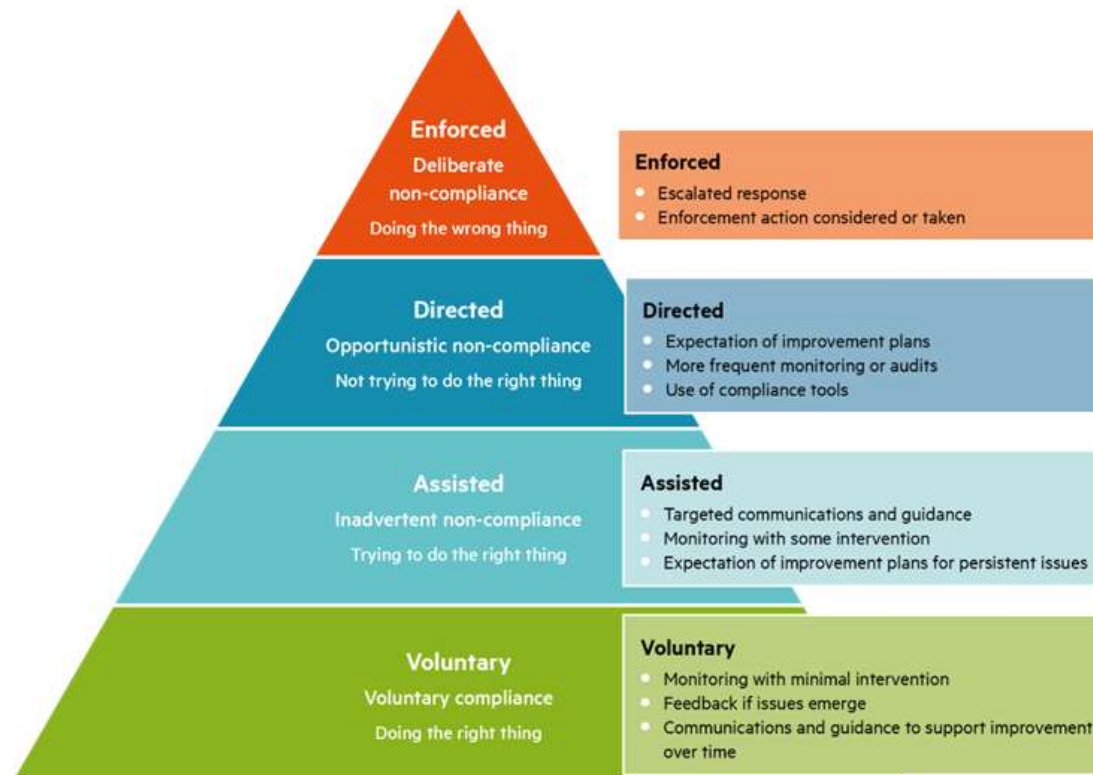


Council supplies

- Fully comply with the Rules or an Acceptable Solution
- Fully comply with the Standards
- Respond promptly to safety risks with appropriate action
- Maintain robust risk management plans
- Demonstrate progress towards resilience



What suppliers can expect





Christchurch Operations team



Rachel East
Water Services Manager (South)



Serena Orr
Water Services Officer



Cameron Caudwell
Water Services Officer





Our Community Supplies Team



Focussing on



Rural and self-supplied kura and schools



Mixed use rural schemes



Community halls, community facilities – such as self-supplied ECE's



State integrated and private schools



Kōhanga Reo



Marae and kāinga

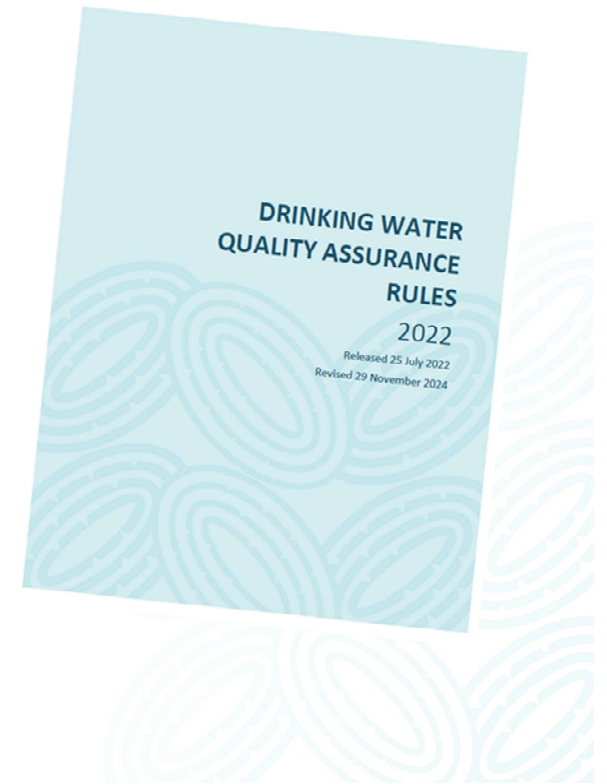
Drinking Water Quality Assurance Rules



The best way to ensure:

- the supply of safe drinking water
- assurance that drinking water complies with Regulations.

is by following the Rules



Acceptable Solutions



- Updated September 2025.
- Lower cost treatment available for households.
- Clearer responsibilities for suppliers and property owners.
- More suppliers can use, including those using surface water.
- Encourages uptake through practical how-to resources.



Discharge to water standard

Sets treatment requirements for the main contaminants released from wastewater treatment plants into waterbodies.



Three steps to follow.

1. Identify the type of receiving waterbody the wastewater is discharged to.
2. Check the concentration limits for each contaminant and what monitoring and reporting is needed.
3. Include and implement the requirements in the resource consent conditions.

Contaminants covered by the standard include organic matter, Total Suspended Solids, Total Nitrogen and Phosphorus, ammonia, *E. coli* and enterococci.

The treatment requirements depend on how sensitive the receiving waterbody is and the level of environmental risk.

Small wastewater treatment plants that discharge to water have different discharge requirements.

There are very few exceptions permitted for discharges to water.



Discharge to land standard

Provides a framework to check if land is suitable for receiving treated wastewater and then sets discharge limits based on the specific risks at that site.



Three steps to follow.

1. Assess the site capability, including the environmental and public health risks, to classify the site.
2. Check the contaminant limits and what monitoring and reporting is needed.
3. Include and implement the requirements in the resource consent conditions.

Loading limits and treatment requirements are set for Total Phosphorus, Total Nitrogen and *E. coli*.

Minimum requirements for monitoring and reporting are set, based on expected environmental effects.

Discharges of wastewater to land must have a management plan and an operations and maintenance plan.

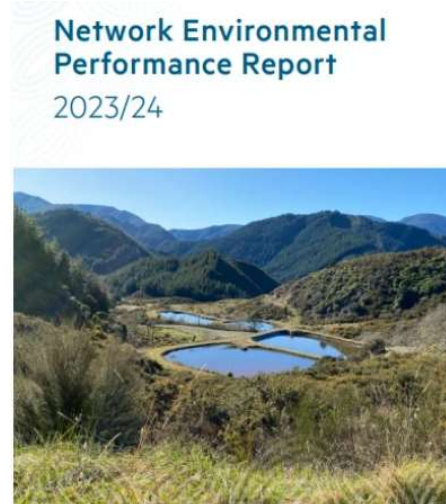
There are limited exceptions for discharges to land.

Other Roles



- Emergency Management – role in oversight of supplier’s response to incidents and emergencies.
- National Engineering Design Standards - used to set requirements for the design, construction and operational performance of water services networks. Currently under development.
- Stormwater - oversight of the regulation, management and environmental performance of stormwater networks in urban areas that are operated by councils, council-controlled organisations, government departments and the New Zealand Defence Force.

Our reports



Unclassified

Pātai – Questions

www.taumataarowai.govt.nz
tim.cadogan@taumataarowai.govt.nz