

Notice is given that Information Forum will be held on:

**Date:** Wednesday 18 March 2026  
**Time:** 9.30am  
**Meeting Room:** Tasman Council Chamber  
**Venue:** 189 Queen Street, Richmond

This forum will be livestreamed on  
[Tasman District Council - YouTube](#)

---

## Information Forum

### PROGRAMME

Information Forums are not meetings and **cannot be used to either make decisions or come to agreements**. Information Forums are to provide information for discussion and an opportunity for questions.

---

#### ATTENDEES

<b>Chairperson</b>	Cr T Walker	
<b>Deputy Chairperson</b>	Cr K Ferneyhough	
<b>Members</b>	Mayor T King	Deputy Mayor B Maru
	Cr C Butler	Cr D McNamara
	Cr J Ellis	Cr P Morgan
	Cr M Greening	Cr K Maling
	Cr J Gully	Cr T Neubauer
	Cr M Hume	Cr D Woods
	Cr M Kininmonth	

No quorum for Information Forum briefings

Contact Telephone: 03 543 8400  
Email: [tdc.governance@tasman.govt.nz](mailto:tdc.governance@tasman.govt.nz)  
Website: [www.tasman.govt.nz](http://www.tasman.govt.nz)

---



# PROGRAMME

**1 WELCOME**

**2 APOLOGIES**

**3 PUBLIC FORUM**

Nil

**4 INFORMATION FORUM REPORTS**

4.1	Emergency Management Overview .....	4
4.2	Environmental Policy Quarterly Activity Report .....	28
4.3	Quarterly Climate Change Update - PLACEHOLDER.....	34
4.4	Strategic Policy Activity Report .....	35
4.5	Transportation Activity Update - February 2026 .....	48
4.6	Three Waters and Waste Management Report.....	65

## 4 INFORMATION FORUM REPORTS

### 4.1 EMERGENCY MANAGEMENT OVERVIEW

<b>Report To:</b>	Information Forum
<b>Meeting Date:</b>	18 March 2026
<b>Report Author:</b>	Joe Kennedy, Manager Emergency Management
<b>Report Authorisers:</b>	Rob Smith, Group Manager - Environmental Science
<b>Report Number:</b>	RIF26-03-1

#### 1. Introduction

- 1.1 This session is intended to give the incoming new Councillors an overview of emergency management in the Nelson Tasman Region, and to inform them what their role is, during emergencies.

#### 2. Why this matters

- 2.1 New Zealand experiences frequent emergencies, mostly driven by weather events such as flooding and severe storms. These events occur predictably at certain times of the year, meaning planning, preparedness, and leadership matter. Elected members play a critical role in supporting communities and ensuring councils are ready.

#### 3. What is an emergency?

- 3.1 Under the Civil Defence Emergency Management Act 2002, an emergency is a situation that:
- 3.1.1 Causes or may cause loss of life, injury, illness, distress, or danger to people or property, and
  - 3.1.2 Cannot be managed by normal emergency services alone, requiring a coordinated response under the Act.

#### 4. Council responsibilities

- 4.1 Councils have statutory responsibilities to manage hazards, reduce risk, and plan for emergencies. Key legislation includes:
- 4.1.1 Civil Defence Emergency Management Act 2002
  - 4.1.2 Local Government Act 2002
  - 4.1.3 Resource Management Act 1991
  - 4.1.4 Building Act 2004
  - 4.1.5 Biosecurity Act 1993

- 4.2 Councils must be able to continue functioning during and after an emergency, even if at a reduced level.

## 5. How the system works

- 5.1 Emergency management in New Zealand operates on the principle:  
Act locally, coordinate regionally, support nationally.
- 5.1.1 NEMA leads nationally.
- 5.1.2 Regional CDEM Groups set policy and deliver joint initiatives.
- 5.1.3 Local authorities plan and respond within their districts.
- 5.1.4 A wide range of partners and stakeholders (including iwi, emergency services, lifelines, welfare agencies, and businesses) support the system.
- 5.2 Every council must be part of a regional CDEM Group, which is responsible for risk management, preparedness, trained personnel, and emergency resources.

## 6. Your role as an elected member and the four Rs of Emergency Management

### 6.1 Reduction

- 6.1.1 Support funding for hazard mitigation and resilience programmes.
- 6.1.2 Support planning decisions that reduce exposure to risk.
- 6.1.3 Investment in reduction is cost-effective, saving \$4–\$13 for every \$1 spent.

### 6.2 Readiness

- 6.2.1 Take an active interest in your council's emergency arrangements.
- 6.2.2 Support CDEM Group planning and preparation.
- 6.2.3 Encourage community resilience and recovery planning.

### 6.3 Response

- 6.3.1 Keep Controllers informed of escalating issues.
- 6.3.2 Champion response efforts and direct the public to reliable information.
- 6.3.3 Help dispel misinformation and rumours.

### 6.4 Recovery

- 6.4.1 Recovery is complex, long-term, costly, and highly scrutinised.
- 6.4.2 It should be planned from the start of a response.
- 6.4.3 Elected members support recovery by listening to communities, supporting recovery teams, and providing political leadership and oversight.

## 7. Attachments / Tuhinga tāpiri

1. [Emergency Management 101 for incoming Council](#)

6

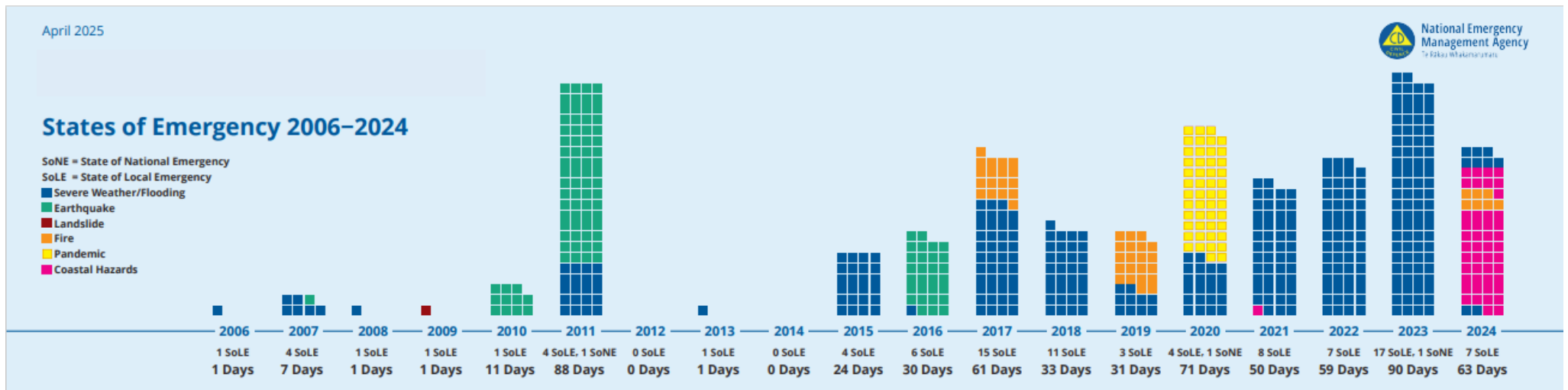


# Civil Defence Emergency Management 101

18 March 2026



# New Zealand has had a busy few years . . .





**Extreme weather events (floods, droughts, storms, etc) will be:**

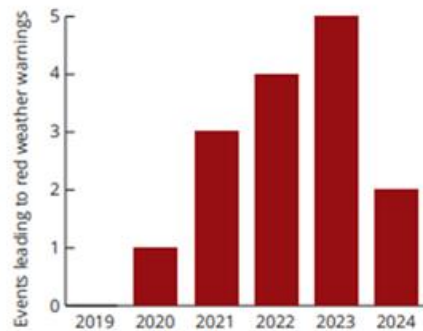
- more frequent
- more intense
- in locations not previously considered at risk.

Evidence suggests the projections appear to be (uncomfortably) accurate

- 2022 weather-related insurance costs were at an unprecedented \$335m
- breaking the previous record of \$305m in 2021
- which broke the previous record of \$274m in 2020
- 2023 will be >\$3.5bn.

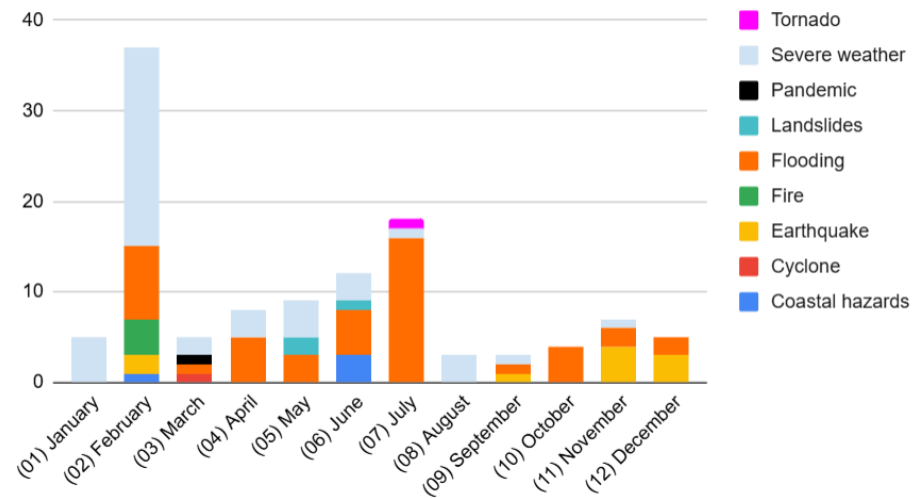
(Insurance Council of NZ)

**Red weather events annually since 2019**



Multiple warnings for a single event (e.g. Cyclone Gabrielle) counted as one 'event'.

**Declaration type by month**



**What the data shows us:**

- It's mostly weather - flooding and severe weather account for around four in five declarations.

**Weather is more likely to happen at particular times**

- Declarations cluster around February and July.
- These spikes align with known weather systems: ex-tropical cyclones in late summer and deep storm cycles in winter.





# Nelson Tasman responses

Year	Event
2008	Windstorm – Maitai (July)
	Snow storm - St Arnaud (August)
	Flooding - Takaka (December)
2009	Wildfire - Atawhai (February)
2010	Tsunami evacuation – Beach and marine (February)
	Severe weather – Tapawera (May)
	Severe weather – Golden Bay (December)
2011	Severe weather – Nelson Tasman region (December)
2013	Tsunami evacuation – Beach and marine (February)
	Severe weather – Richmond/Nelson flooding (April)
2018	Severe weather - Cyclone Fehi (February)
	Severe weather - Cyclone Gita (February)
2019	Wildfire - Pigeon Valley (February)

Year	Event
2020/2021	Pandemic - COVID-19
2020	Hailstorm – Motueka (December)
2021	Severe weather – Regional Flooding (July)
2022	Severe weather – Nelson Tasman region (August)
2023	Tornado – Tasman (April)
	Severe weather – Nelson Tasman (May)
2024	Wildfire - Lee Valley (February)
2025	Severe Weather Nelson Tasman (April)
	Severe Weather – Nelson Tasman (June-July)



## Definition of an emergency

An emergency, as defined by the Civil Defence Emergency Management Act (2002), is a situation:

- Caused by any happening, whether natural or otherwise, *that*
- Causes or may cause loss of life, or injury, or illness, or distress or in any way endangers the safety of the public or property, *and that*
- Cannot be dealt with by emergency services, or otherwise requires a significant and coordinated response under the CDEM Act.



## Legislative responsibilities

- Councils have **specific legislative responsibilities** to manage hazards and risks, and to plan and prepare for emergencies.
- Key legislation:
  - Civil Defence Emergency Management Act 2002 (CDEM Act)
  - Local Government Act 2002
  - Resource Management Act 1991 (RMA)
  - Building Act 2004
  - Biosecurity Act 1993

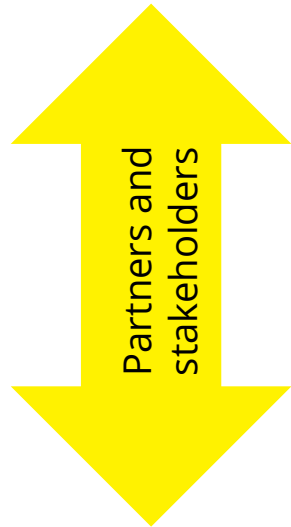




## CDEM Act 2002

- The purpose of the Act is to:
  - Promote the sustainable management of hazards.
  - Encourage and enable communities to achieve acceptable levels of risk.
  - Require local authorities, via regional groups, to deliver planning, programmes and activities across the '4 Rs' – reduction, readiness, response and recovery.
- Specifically, Section 64 sets out the duties of local authorities:
  - A local authority **must plan and provide for civil defence emergency management within its district.**
  - A local authority **must ensure it is able to function to the fullest possible extent**, even though this may be a reduced level, **during and after an emergency.**

# Act locally, coordinate regionally, support nationally



Territorial and regional authorities must plan and provide for emergency management within their local area.



The Nelson Tasman CDEM Group is responsible for setting regional emergency management policy and delivering joint initiatives.



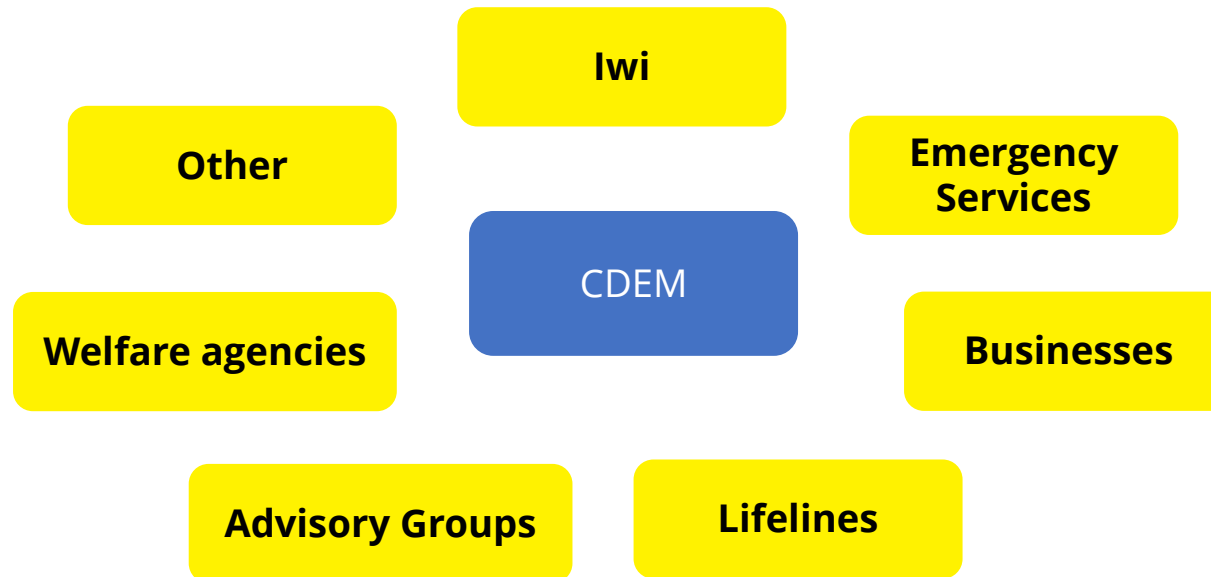
NEMA is the Government lead for emergency management. NEMA's key functions are steward, operator and assurer of the emergency management system.



**Hon Mark Mitchell**  
**Portfolios:** Emergency Management and Recovery, Police (including Serious Fraud Office), Corrections, Sport and Recreation, Ethnic Affairs  
 MP for Whangaparāoa



# Examples of partners and stakeholders



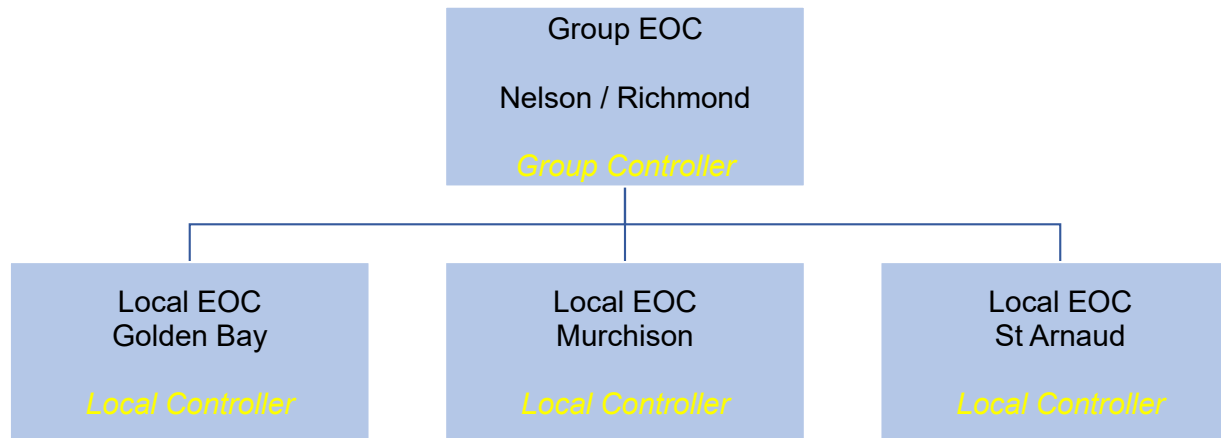


## Civil Defence Emergency Management Group

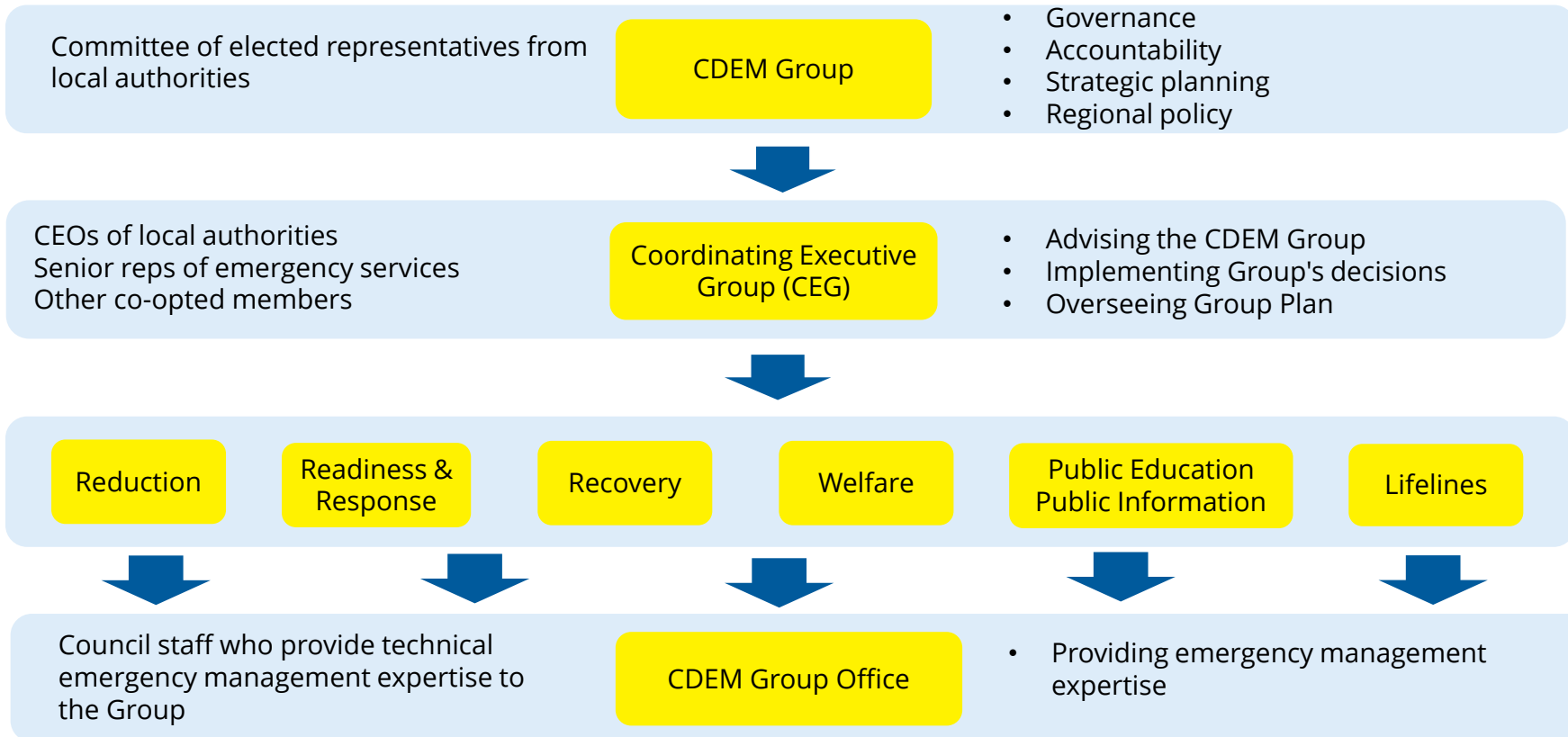
- Every council must be a member of a regional **Civil Defence Emergency Management Group**.
- Section 17 of the CDEM Act spells out Groups' functions, including:
  - Identifying, assessing and managing hazards and risks.
  - Consulting and communicating about risks.
  - Identifying and implementing cost-effective risk reduction.
  - Maintaining and providing suitably trained personnel for civil defence emergency management.
  - Maintaining and providing services, information and other resources for civil defence emergency management.



# Nelson Tasman structure (Response)



# Nelson Tasman structure (BAU)





# The 'Four Rs' of emergency management

**Reduction**

**Readiness**

**Response**

**Recovery**





# Reduction

**Every \$1 spent on reduction saves between \$4 - \$13 in response and recovery**

How elected members can support **reduction**:

- Support your council's funding for programmes of work that mitigate the impacts of natural hazards.
- Support your council's decisions to reduce exposure to risk through district planning, coastal adaptation planning, urban growth strategies, etc.
- Support initiatives that increase resilience.





## Readiness

How elected members can support **readiness:**

- Support your CDEM Group to plan and prepare for emergencies.
- Take an active interest in your council's emergency management arrangements.
- Promote and encourage the preparation of community resilience and recovery plans.
- Support priorities to strengthen community connectedness.





## Response

The **actions taken immediately before, during or directly after an emergency** to save lives, protect property and to help communities recover.

How elected members can support a **response**:

- Keep controllers informed of escalating issues.
- Champion the response efforts.
- Direct community members towards the right place to get the support they need.
- Dispel rumours, correct information and validate issues.





## Who can declare a state of emergency

- **Mayor** of the district most affected
- Mayor of the other district
- Deputy Mayor of the district most affected
- Deputy Mayor of the other district
- Any elected local authority representative
- The Minister
- Controllers **cannot** declare.
- The **Group Controller is in charge of the operational response** – they must direct and coordinate resources made available.
- Local Controllers can direct and coordinate but must follow the Group Controller's direction.



## **Additional responsibilities for Mayors and Chairs**

Mayors, Chair of the Joint Committee and their deputies have additional responsibilities during a response, including:

- Supporting the Controller.
- Sharing information with other councillors.
- Having a visible presence in the community to help maintain public confidence.





## Recovery

The coordinated efforts and processes to bring about the immediate, medium-term and long-term holistic regeneration of a community following a civil defence emergency.

- Will be multi-faceted, long-running and costlier.
- Highly likely to be subject to close scrutiny from community and media.
- Should be pre-planned and implemented from day one of a response (or as soon as practicable).



# Recovery

How elected members can support **recovery**:

- Listen to your community.
- Support those working on recovery.
- Show political leadership – ensure appropriate scrutiny and provision of resources to the recovery team.



# Useful resources

There is a range of useful resources specifically for elected members on the NEMA website:

[Resources for elected officials » National Emergency Management Agency](#)

**DEPARTMENT OF THE PRIME MINISTER AND CABINET**  
TE TARI O TE PIRIMIA ME TE KOMITI MATUA

**CIVIL DEFENCE**

## TOP TIPS for Elected Representatives

Before an Emergency	During an Emergency
<ul style="list-style-type: none"> <li>• Understand the risks and community vulnerabilities in your local area.</li> <li>• Know the key emergency management personnel before, during and after an emergency (i.e. CDEM professional lead, Controller, Recovery Manager).</li> <li>• Take an active interest in your council emergency management arrangements and CDEM Joint Committee decisions.</li> <li>• Mayors – know your CDEM response arrangements – particularly for declaration and recovery transition.</li> <li>• Mayors – get to know your NEMA Regional Emergency Management Advisor.</li> </ul>	<ul style="list-style-type: none"> <li>• Focus on providing confidence and assurance for your communities.</li> <li>• Keep controllers informed of escalating issues.</li> <li>• Champion the response efforts – ensure your communities understand there are arrangements to help them.</li> <li>• Direct people in need to the Response arrangements rather than try to solve issues individually.</li> <li>• Make sure you take breaks and reconnect with your family.</li> </ul>

The infographic also features a colorful illustration of a rural and urban landscape with houses, trees, a tractor, and a car.



Questions?

## 4.2 ENVIRONMENTAL POLICY QUARTERLY ACTIVITY REPORT

<b>Report To:</b>	Information Forum
<b>Meeting Date:</b>	18 March 2026
<b>Report Author:</b>	Barry Johnson, Environmental Policy Manager
<b>Report Authorisers:</b>	Sue McLean, Kaiwhakahaere ā Rōpū – Te Pae Rautaki Ahumoni   Group Manager - Strategy & Finance
<b>Report Number:</b>	RIF26-03-2

### 1. Introduction to the team and what it does

- 1.1 The Environmental Policy team supports Council by developing planning and policy that manages growth and environmental outcomes, implements national requirements while also addressing local planning and environmental issues as they arise.
- 1.2 The Environmental Policy team is responsible for the development, implementation, monitoring and review of the:
  - Tasman Regional Policy Statement,
  - Tasman Resource Management Plan and associated plan changes,
  - Nelson Tasman Future Development Strategy
  - Community level spatial plans
  - Climate change adaptation plans

as well as providing policy advice on a wide range of environmental, urban, and rural issues. This includes leading plan change processes, responding to legislative reform, supporting growth planning and infrastructure alignment, and working closely with internal teams, iwi partners, stakeholders, and central government agencies.
- 1.3 The team also provides input into projects such as the Long-Term Plan and growth modelling, ensuring alignment between land use planning, infrastructure provision, and Council's broader strategic objectives.
- 1.4 The team is made up of experienced planners and policy specialists with expertise across a range of topics including urban growth, rural and coastal policy, freshwater management, natural hazards, climate change, air quality and statutory plan making.

### 2. Current Policy Work Programme

- 2.1 The Council's environmental policy work programme continues to be shaped by significant and ongoing reform of the resource management system at a national level. While major plan review work has been constrained by central government direction, the team has continued to progress priority plan changes that address pressing urban growth and freshwater management issues, while also preparing for transition to the replacement resource management system.

2.2 Key current plan change priorities are:

**Plan Change 81 – Urban Growth**, which responds to identified shortfalls in development capacity and gives effect to the Nelson Tasman Future Development strategy and national direction; and

**Plan Change 84 – Freshwater**, which addresses urgent freshwater management issues, including Water Conservation Order obligations and aquifer protection.

2.3 Natural hazards background work continues to be a priority, with the short-term focus of applying the new National Policy Statement for Natural Hazards ‘risk matrix’ assessment against PC81 sites. A separate report on Plan Change 85 Natural Hazards will soon be presented to the Strategy Finance and Performance Committee recommending this work is incorporated into future plan making under the new system rather than continue with a standalone plan change to the TRMP.

2.4 At the same time, staff are beginning preparatory work to ensure the Council is well positioned to implement the new planning framework once replacement legislation comes into force.

### **3. Resource Management Reform – Current Status**

3.1 The Government is undertaking substantial reform of the resource management system through a staged, three phase programme.

#### **3.2 Phase 1 – Reinstatement of the RMA (Completed)**

3.3 Phase 1 repealed the Spatial Planning Act and the Natural and Built Environment Act enacted by the previous Government and reinstated the Resource Management Act 1991. This phase was completed in December 2023.

#### **3.4 Phase 2 – Amendments to the RMA and National Direction (Largely Complete)**

3.5 Phase 2 involved targeted amendments to the RMA and updates to national direction. The Resource Management (Consenting and Other System Changes) Amendment Act 2025 was enacted in August 2025. The amendments primarily focus on resource consenting processes, compliance activities, system efficiency, and delivery of housing and infrastructure.

3.6 Consultation on several national direction packages occurred in mid-2025. New national instruments to complement the new legislation are expected in tranches, although final timeframes remain uncertain.

3.7 A key outcome of Phase 2 is the introduction of a prohibition on notification of plan changes by councils. This is unless a plan change has already reached the hearing stage or an exemption is granted by the Minister – see below.

#### **3.8 Phase 3 – Replacement Resource Management Legislation (In Progress)**

3.9 Phase 3 introduces a new resource management system to replace the RMA. The relevant bills have had their first reading, submissions have closed, and the Environment Select Committee is currently hearing submissions. Tasman District Council was not invited to present an oral submission.

3.10 The Select Committee is expected to report back to the House around mid year, with enactment of the new legislation anticipated shortly thereafter.

- 3.11 The new system will require councils to prepare three new plans, beginning with a Regional Spatial Plan, which may be developed jointly with neighbouring councils. This will be followed by concurrent requirements to produce a Land Use plan and a Natural Environment plan.

#### **4. Government “Plan Stop” Direction – Implications for Tasman**

- 4.1 The 2025 RMA amendments introduced a prohibition on plan reviews, notification of plan changes and changes that have not yet reached the hearing stage.
- 4.2 This direction does not affect Tasman’s current plan review position, as the full review of the Tasman Resource Management Plan was paused in late 2023 in response to ongoing legislative reform. However, the direction does affect plan changes that are ready for notification but have not yet been publicly notified.

#### **5. Plan Changes Requiring Ministerial Approval**

- 5.1 There are currently two plan changes that are ready for notification but require Ministerial approval to proceed:
- Plan Change 81 – Urban Growth; and
  - Plan Change 84 – Freshwater.

##### **Plan Change 81 – Urban Growth**

- 5.1 Plan Change 81 responds to identified housing and business land capacity shortfalls and gives effect to the National Policy Statement on Urban Development and helps to implement the Council’s Future Development Strategy. The plan change directly addresses development capacity issues previously notified to the Minister for Housing and Urban Development, who has expressed support for progressing the plan change.
- 5.2 Council has requested approval to notify Plan Change 81 using the Streamlined Planning Process (SPP). This approach provides an automatic exemption from the plan stop direction and allows the plan change process to be tailored, with appeal rights limited to points of law.
- 5.3 A draft Ministerial Direction enabling the use of the Streamlined Planning Process has been provided to Council, and officers have reviewed and provided feedback on that draft. Engagement to date indicates the Minister is likely to approve the use of the SPP for PC81.
- 5.4 Based on information currently available, it is anticipated that notification of Plan Change 81 will occur in late April or early May, subject to the Ministerial Direction being finalised.

##### **Plan Change 84 – Freshwater**

- 5.5 Plan Change 84 addresses time critical freshwater management issues, including:
- giving effect to the Water Conservation Order for Te Waikoropupū Springs and aquifer; and
  - a targeted amendment to the recontouring rule to clarify interpretation and reduce unnecessary consenting requirements, particularly for housing development.
- 5.6 An application for Ministerial approval to notify PC84 was submitted to the Ministry for the Environment in August 2025. Council received a subsequent request for further information

which was provided in Mid-November. There has been no further communication from either officials or the Minister despite repeated requests.

## **6. Long Term Plan**

- 6.1 The Environmental Policy team is leading the review of the Council's growth model to inform the 2027 Long Term Plan, particularly to support infrastructure Activity Management Plans. The Council's in-house growth model has been in place since 2004 and is being updated to reflect current planning assumptions and future growth patterns. The review commenced in 2025 and is well underway.
- 6.2 The review includes testing the developability of around 15 towns across the district, assessing potential development yield, and examining development capacity, timing, and sequencing over a 30-year period. Testing of town developability and potential yield was completed in January and February 2026. Once updated demand projections (population projections) are incorporated, capacity and sequencing will be assessed in April and May 2026. The model is intended to identify whether sufficient capacity exists to meet expected demand, recognising that servicing or zoning constraints can affect delivery.
- 6.3 Through Plan Change 79, which enables development within existing zoned areas, and Plan Change 81, which provides for new urban growth areas, the Council has already established the strategic direction for growth across the district. The growth model provides the link between this planning framework and infrastructure demand. It is therefore important that infrastructure priorities and investment decisions made through the Long-Term Plan are consistent with, and support, this agreed growth agenda so that planned development capacity can be realised.
- 6.4 Providing sufficient development capacity supports broader community outcomes, including housing affordability, workforce availability, business land supply and social wellbeing.

## **7. Motueka Master Plan**

- 7.1 Motueka is a desirable place to live and is an important centre for the western side of Tasman Bay. However, it faces constraints on its future growth and development from multiple sides including natural hazards, infrastructure limitations, and the surrounding highly productive land. Current Council projects have tended to be ad hoc and reactive to issues rather than having longer term strategic drivers. Within this context there is an opportunity to start a conversation with the Motueka community on the future of Motueka, taking into consideration the constraints and opportunities now and into the future.
- 7.2 Two reports were presented to the Strategy and Policy Committee in May (RSPC25-05-2) and September 2025 (RSPC25-09-8) regarding the opportunity for a masterplan process for Motueka. The committee resolved in September that staff should start to integrate background work on Motueka with early work on the Regional Spatial Plan. The focus on understanding what information we hold and options to fill key information gaps will inform these future planning processes.
- 7.3 Since the September meeting, the government has signalled through the National Adaptation Framework (released October 2025) that the Climate Change Response Act will be amended to require councils to prepare adaptation plans in priority areas. The Planning Bill's provisions (released December 2025) for regional spatial plans requires councils to set out the strategic direction for development and public investment priorities in a region; and to identify the priority locations for adaptation planning (amongst other requirements). Between

these two complimentary legislative processes of spatial planning (strategic direction on where to grow) and adaptation planning (how our communities remain natural hazard and climate-resilient over the longer term), staff believe that the current need for a specific masterplan process is looking unlikely. Staff will continue to formalize our thinking as the new legislation proceeds through to enactment and implementation.

- 7.4 Nevertheless, to inform spatial planning and adaptation planning processes, there remains the need to start a conversation with the Motueka community on the future of Motueka. Staff are now in the early days of considering this scope, along with resourcing and alignment with other key work programmes such as community engagement on the Long-Term Plan. Staff will provide updates to Council as this work programme evolves and there is clarity with the new legislation.

## 8. Highlights this period

- 8.1 The first two months of 2026 has been a busy time for the team:

**Plan Change 79 – Deferred zoning** - Hearing completed, Council adopted the hearing commissioners report and recommendations on 19 February, and the decision was notified 13 March. The appeal period ruins for 30 working days. PC79 proposes to introduce a new deferred zone framework to replace the existing method in the Tasman Resource Management Plan. It also proposes to formally rezone some existing deferred land on the basis that servicing is now available.

**PC81 Urban Growth** – Staff have responded to the minister’s consultation on a draft direction to use the streamlined planning process. Currently preparing for notification of PC81, subject to ministerial approval.

**Private Plan Change Request PC86** – A hearing was held on 27 February, and we are currently waiting for the report and recommendations from the hearing commissioner. PC86 is a request to amend the boundary between the Wai-iti Dam service zone and the Appleby Gravel Aquifer zone. The request was accepted by Council on 14 August 2025; it was notified on 8 September, and one submission and one further submission were received.

The **Technical Landscape study** identifying Outstanding Natural Features (ONF) and Outstanding Natural Landscapes (ONL) has been completed. This is the culmination in over 15 years of work. While the work will not now progress to a plan change, the study will be an important input in the development of a Regional Spatial Plan.

## 9. Next Steps and Forward Work Programme

- 9.1 Recent Government announcements have created a period of uncertainty for plan making. While the plan stop direction limits the ability to progress some plan changes in the short term, Tasman faces pressing environmental and growth related challenges that cannot be deferred indefinitely.
- 9.2 As the reform process continues, the focus is shifting toward ensuring the Council is well positioned to transition to the new resource management system. The replacement system will require the preparation of three new plans over a relatively short timeframe. Under the current system, a full plan review typically takes up to a decade and costs in the order of \$10 million, plus staff time for a council of Tasman’s size.

- 9.3 Even allowing for anticipated efficiencies, standardisation, and cost reductions under the new system, this represents a significant organisational undertaking that will need to be accounted for in the next Long-Term Plan.
- 9.4 The pause created by the plan stop direction is allowing staff to begin early preparation for development of a Regional Spatial Plan, which will be the first statutory plan required under the new framework. Initial work is focused on identifying statutory requirements, reviewing existing information and evidence bases, and identifying key information gaps.
- 9.5 A reset of the Environmental Policy work programme will be required once there is greater certainty around the content, process, and timing of the replacement legislation. Council direction on the revised work programme is anticipated later in the year.

<b>10. Attachments / Tuhinga tāpiri</b>
---

Nil

### 4.3 QUARTERLY CLIMATE CHANGE UPDATE - PLACEHOLDER

<b>Report To:</b>	Information Forum
<b>Meeting Date:</b>	18 March 2026
<b>Report Number:</b>	RIF26-03-3

This report will be circulated separately.

#### 4.4 STRATEGIC POLICY ACTIVITY REPORT

<b>Report To:</b>	Information Forum
<b>Meeting Date:</b>	18 March 2026
<b>Report Author:</b>	Alan Bywater, Team Leader - Community Policy; Dwayne Fletcher, Strategic Planning & Enterprise Manager
<b>Report Authorisers:</b>	Sue McLean, Kaiwhakahaere ā Rōpū – Te Pae Rautaki Ahumoni   Group Manager - Strategy & Finance
<b>Report Number:</b>	RIF26-03-4

*You can free type your information report below, or just complete Subject Heading One and delete the others and attach your material to .*

#### 1. Key Projects and Activities

- 1.1 This report provides an update on key strategic policy and planning activity underway within the Strategy and Finance Group – Strategic Planning Team. The update is intended to inform elected members of progress, highlight areas of risk or delay, and signal upcoming matters that will require engagement or direction.
- 1.2 The Strategic Planning Team comprises two functions: **Community Policy** and **Infrastructure Planning**. Together, these teams lead and coordinate a wide range of statutory, strategic, and cross-organisational work programmes, including policy development and review, growth and infrastructure planning, climate change and resilience integration, and coordination of major LTP workstreams.
- 1.3 The tables below summarise the key projects and activities currently underway, including a brief description of each item, its current status, and the relevant target completion date (TCD). Project status is reported using a traffic-light approach:
- **On track (green):** work is progressing as planned against the current TCD
  - **Delayed (orange):** work is behind the original TCD. On first reporting, the reason for delay is noted. A revised TCD will be provided in the subsequent reporting cycle.
  - **At risk / discontinued (red):** work has been paused, materially delayed, or is no longer proceeding.
- 1.4 Community Policy:
- The Community Policy function leads the development, review, and implementation of Council’s strategic and statutory policy framework, including Annual Plan and Long Term Plan policy components, growth and development policy, and key funding and regulatory reviews. This work supports Council decision-making, legislative compliance, and effective community engagement, and provides a clear policy foundation for investment, service delivery, and community outcomes.



Project	Description	Status	Target completion date (TCD) / update
---------	-------------	--------	---------------------------------------

Corporate Planning			
Annual Plan 2026/2027	Preparation of the Council's Annual Plan for the 2026/2027 year.	On track	<p><b>TCD: 30 June 2026</b></p> <p>The Annual Plan 2026/2027 was discussed at a workshop on 18 February 2026, with in-principle approval of proposed Annual Plan budgets at the 12 March Council meeting.</p> <p>The consultation document and supporting material is scheduled to be adopted at the 26 March 2026 Council meeting.</p>
Introduction of 2025 Weather Event Recovery rate	Introduction of 2025 Weather Event Recovery rate from 1 July 2026	On track	<p><b>TCD: 30 June 2026</b></p> <p>Report to the Council meeting on 18 March 2026 seeks in-principle approval for the new rate.</p> <p>Details will form part of the Annual Plan consultation document, which is scheduled to be adopted on 26 March 2026.</p>
Schedule of Fees and Charges 2026/2027	Review of the Council's fees and charges to ensure they are charged at the appropriate level for each activity.	On track	<p><b>TCD: 30 June 2026</b></p> <p>The schedule was discussed with Council at a workshop on 18 February 2026.</p> <p>Draft schedule is due to be adopted for consultation on 26 March 2026 Council meeting.</p>
Long Term Plan 2027-2037	Overarching process		<p><b>TCD: 30 June 2027</b></p> <p>The LTP process and discussions with Council to guide the decision has started. A strategy session was held with Council on 4 March with further workshops on Asset management policy and financial strategy and policy in the next month. More detail on the role the team play and specific LTP workstreams is discussed below.</p>
Long Term Plan 2027-2037   Assumptions	Preparation of working assumptions for the LTP	On Track	<p><b>TCD: 15 May 2026</b></p> <p>Draft set of working assumptions is being developed. Work in progress will be reviewed by the Audit and Risk Committee on 10 March 2026.</p> <p>Working assumptions are scheduled to be discussed at LTP workshop on 1 April 2026.</p>
Long Term Plan 2027-2037   Growth Model	Growth modeling for Tasman's towns and settlements to inform and	On Track	<p><b>TCD: 'first-cut' outputs 29 May, final outputs 31 October.</b></p>

	support wider LTP processes.		<p>Current timelines indicate that the Growth Demand and Supply Model 'first cut' outputs are expected to be completed by 30 May, with finalised model outputs ready for LTP consultation by 21 October.</p> <p>Workshops to assess supply potential have been progressing. A decision on the growth scenario assumption is required to proceed with the next stage which considers roll out (i.e. where and when development will take place).</p> <p>Timing risk remains, but completion within these deadlines is still considered achievable.</p>
Long Term Plan 2027-2037   Development and Financial Contributions Policy	Review of the Development and Financial Contributions Policy	On Track	<p><b>TCD: 30 June 2027</b></p> <p>Potential changes to further investigate to be discussed at a Council workshop in April.</p> <p>Legislative changes may influence extent and focus of the review.</p>
Resident's Survey 2026	Survey of residents to gather feedback on the Council's performance as reported in the annual report.	On track	<p><b>Target date: September 2026</b></p> <p>The resident's survey is undertaken quarterly. The first two waves of results have been collected with the third wave currently being collected. The final wave will be carried out in the first half of 2026.</p>
Community Funding Review	To review the funding framework for supporting and funding community organisations, schools, businesses, and individuals.	Delayed	<p><b>New target date to be established.</b></p> <p>This work has been delayed due to higher priority and time critical work.</p> <p>Early engagement is currently underway, seeking feedback from previous funding applicants and recipients, and the wider community.</p> <p>A workshop with elected members is planned for late April.</p>
<b>Policy</b>			
Gambling Venues Policy Review	Review of the Gambling Venue Policy 2019	Delayed	<p><b>New target date to be established.</b></p> <p>This work has been delayed due to higher priority, time critical work. A new timeline will be developed.</p> <p>The review has begun with staff carrying out research. Early engagement is currently underway to capture community sentiment.</p>

Local Alcohol Policy Review	Cyclic review of the Local Alcohol Policy, which provides the community an opportunity to have their say on how alcohol is sold and supplied in Tasman	On track	<b>TCD: October 2026</b> Early engagement with interested stakeholders and the community has been analysed, along with research and data from several sources. Results and potential direction will be workshopped with elected members in March.
Policy on Giving Permission to Fly Unmanned Aircraft Over Council Land	Review of 'interim' policy created in 2015 for currency.	On track	<b>TCD: June 2026</b> Workshop on 11 March 2026. Minor changes proposed.
<b>Reserves and community facilities</b>			
Golden Bay Ward reserve management projects	Review of the Golden Bay Ward Reserve Management Plan (RMP) and classification of existing reserves in Golden Bay Ward	On track	<b>TCD: February 2027</b> Public notification of the 'seeking ideas for the draft RMP' initial consultation round took place on 23 January 2026 via publication of a notice on our website and an article in Newsline. Information about the RMP review and a survey have been published on the project page: <a href="#">Golden Bay Ward reserve management projects   Shape Tasman</a> , with hard copies available in Council's service centre and library in Tākaka. The initial consultation round is open until 30 March 2026. Reports on proposals to classify existing reserves in Golden Bay Ward will be presented to the Golden Bay Community Board meeting on 30 March and Strategy, Finance and Performance Committee meeting on 7 April. At the latter meeting, the Committee will consider a request to publicly notify the proposals for consultation.
Community Occupancy Policy	Development of a new policy to guide operational decision-making around entering into and reviewing leases of Council owned land	On track	<b>TCD: September 2026</b> An overview for the new Council along with the potential financial impact for each of the community groups will be shared with the Strategy, Finance and Performance Committee on 19 <sup>th</sup> March.
<b>Climate change and environmental</b>			
Tasman Climate Response and Resilience Strategy and Action Plan (2023-2035)	The Tasman Climate Response and Resilience Strategy and Action Plan 2024-2035 outlines investments and actions for climate mitigation and adaptation over the next 10 years.	On track	<b>Quarterly Progress Reporting:</b> Staff provide updates on progress implementing the Strategy and Action Plan in the 'Climate Change Update' reports every quarter. The second quarterly report for the 2025/2026 financial year is included as a separate agenda item for the 18 March Information Forum.


Corporate greenhouse gas inventory	Annual monitoring of greenhouse gas emissions from Council's operations.	On track	<p><b>TCD: 1 July 2026</b></p> <p>Staff have obtained almost all of the data required to complete the inventory for the 2024-2025 financial year. Once all data is available, we will undertake the calculations using the latest MfE template and prepare the associated inventory report.</p> <p>No funding was allocated to independently verify the inventory this year, so we have arranged for another staff member with expertise in this field to peer review both the calculations and report once complete.</p> <p>Once the peer review process is complete, we will present the finalised report to Council.</p>
Community greenhouse gas inventory	Bi-annual monitoring of greenhouse gas emissions for the Tasman region	On track	<p><b>TCD: April 2026</b></p> <p>Data for the 2023/2023 reporting period has been verified and is being refined to improve accuracy and correctness. Staff training is underway on the regional emissions of pathways and tool functionality, with pathways features currently being tested by the consultant prior to wider use.</p>
Nelson-Tasman Climate Change Risk Assessment and Explorer (NTCCRA) project		Delayed	<p><b>TCD: July 2025</b></p> <p>Tasman District Council and Nelson City Council staff have completed their review of the regional climate change risk assessment, with finalization expected by November 2026.</p> <p>Council has decided not to proceed with the Resilience Explorer geospatial tool at this stage due to cost and readiness to community use. Required analysis can be generated through existing internal systems, with the option to revisit in the future.</p> <p>The project remains within budget. A technical summary and joint implementation and communication plan are being developed with Nelson City Council. The full report will undergo legal peer review in mid-March, after which it will be publicly available and shared with LTP and AMP authors.</p>
Climate change and resilience integration into LTP, Finance and Infrastructure Strategy	Integration of climate change and resilience considerations across key Long Term Plan components, including environmental scan, business case templates, Activity Management Plan, and Community Outcomes review	Delayed	<p><b>TCD: February 2026</b></p> <p>Integration is underway as part of the LTP planning cycle to ensure consistent consideration of climate risk, resilience, and long-term investment decisions. Delayed pending LTP planning timelines and strategic direction.</p>



Climate change and natural hazards forecast assumptions	Development and integration of climate change and natural hazards assumptions to inform risk, investment, and infrastructure planning within the Long Term Plan	Complete 	<b>TCD: February 2026</b> Aligned with statutory requirements and LTP process. These draft assumptions will support consistent consideration of climate risk, resilience, and long-term asset management during LTP development.
Corporate Risk Register – Climate and Resilience integration	Update of the Risk Register to integrate climate and resilience considerations within the Council's enterprise risk management framework	Complete 	<b>TCD: March 2026</b> Climate-related risks have been reviewed and updated in line with the Council's rating methodology and governance of oversight requirements.
Tasman Biodiversity Strategy Implementation Plan (2025-2028)	Triennial update of climate resilience considerations to guide delivery of the Biodiversity Strategy and inform the next iteration of the strategy and plan	New: On track	<b>TCD: June 2026</b> Actions focused on reducing climate and natural hazards risks, strengthening ecosystems and primary sector resilience, increasing carbon sequestration and enabling revenue to support future nature restoration.
Waimea Inlet Strategy and Action Plan Review	Triennial update of the Waimea Inlet Strategy and Action Plan.	New: On track	<b>TCD: July 2026</b> Work is underway to support the Waimea Inlet Coordination Group in reviewing and updating the Strategy and Action Plan (the current action plan covers the period mid-2023 to mid-2026). Climate considerations from the Tasman Response and Resilience Strategy (being updated), including relevant information from the Regional Climate Change Risk Assessment, are being drafted as part of the 2026-2029 update process. The TDC-NCC joint Climate Change Vulnerability Assessment will inform climate-related actions in the plan.

Te Uru Kahika – Economies of Scope Paper for Regional Council Chief Executives (RCEOs)	Development of a paper outlining opportunities for economies of scope across regional Councils to strengthen capability, efficiency, and coordination in areas such as climate risk, adaptation planning and technical analysis.	New: On track	<b>TCD: March 2026</b>  Paper being developed through Te Uru Kahika Climate Change Special Interest Group, with Tasman District Council chairing the working group, for discussion with RCEOs to inform potential shared approaches and capability across the sector.
--	--	---------------	---

1.5. Infrastructure Planning

The Infrastructure Planning function leads strategic planning and long-term investment planning for Council’s infrastructure activities, including water supply, wastewater, stormwater, rivers and flood control, and transport. The team coordinates infrastructure inputs into the Long Term Plan, Infrastructure Strategy, Water Services Strategy, and asset management framework, working with delivery teams and external partners to ensure planning is affordable, resilient, and aligned with growth, climate, and regulatory requirements.

Project	Description	Status	Target completion date (TCD) / update
<b>General</b>			
Motueka West Development – Stormwater, Wastewater and Roding infrastructure to support Motueka West Development Phase 1.	Part funding of Stormwater, Wastewater and Roding infrastructure to support Motueka West Development Phase 1 is controlled by joint agreements (IAF) with Kāinga Ora Housing and Communities NZ and Wakatū Incorporation	At risk- On Hold	<b>TCD: Tbc</b>  Current issue: Non-vested road NZTA maintenance funding gap - The Wakatū resource consent application is <b>on hold</b> pending confirmation of non-vesting of roadways. The Wastewater pumpstation construction tender is <b>on hold</b> , pending Wakatū confirmation of location. The Manoy Street roundabout is <b>on hold</b> , pending Wakatū’s consent approval and TDC funding approval. NIFF are to advise if the majority of IAF funding can be paid to Council, based on the amount of infrastructure completed.
Local Water Done Well	Task has transitioned into supporting approval and then submission of the Water Services Delivery Plan	Complete 	<b>Complete – WSDP approved</b>  WSDP plan approved on 10th Dec 2026. A project has been set up to meet implementation/transition requirements for a go live date of 1 July 2027. Involvement in this project is ongoing
TRMP Changes	Roding and three waters report to address servicing for	On track	<b>TCD: Connected to PC81 notification date – to be advised</b>

	the identified components of PC81 (incl. Mapua) and PC80. (and adding PC85 - Natural Hazards)		Minimal work to clean up infrastructure report based on Ministerial guidance
FDS Implementation – change management framework to support infrastructure planning	To support the implementation of FDS by way of having a change management process and infrastructure planning framework (in conjunction with the PMO)	On track	<b>Ongoing programme of work</b> Working on basis of information and ways of holding this information for all to use.  Work progressing on other initiatives such as WW & Water Supply requirements for Richmond intensification.  Stormwater and Hazard clarity roles & process in Plan Change process being developed
Long Term Plan 2027-2037 Review of AM Policy	Review and adoption of AM Policy	New – On Track	<b>TCD: Q2 2026</b>  Review of Policy underway. Council workshop on 25th March.
Long Term Plan 2027-2037 Prioritisation Framework	Develop initial prioritisation framework for application on capital programme for 2026/27 Annual Plan and for LTP	New – On Track	<b>TCD: Q2 2026</b>  Review of Policy underway. Council workshop on 25th March.
Long Term Plan 2027-2037 Strategic Asset Management Plan (SAMP) Development	Develop full SAMP for Water Services as required by legislation and an initial SAMP for non-waters infrastructure activities	New – On Track	<b>TCD: Q4 2026</b>  Water services SAMP starting with timeframe of mid 2026 for completion. Non-water SAMP to start after Waters SAMP
<b>Transport</b>			
Joint Speed Management Plan	Undertake a review of speeds across Nelson and Tasman, culminating in a Joint Speed Management Plan to submit to Waka Kotahi. The new speed limits can be introduced over time once approved.	On track	<b>TCD: Q3 2026</b>  Implementation of first tranche complete Implementation of second tranche underway - currently awaiting approval by Director of Land Transport
Transportation Policies and Procedures Manual	Update of the transportation policies and procedures manual	Complete 	<b>TCD: December 2025</b>  Manual was updated but there are three policies that will go to Council in June 2026:
Transportation Policies	Two policies need to be reviewed: Low Use Bridges Policy and Encroachment policy. There is one new policy: Resealing of Roads Policy	New - On Track	<b>TCD: December 2026</b>  Three policies that will go to a Council workshop in June 2026:
EBus Review	EBus services are reviewed after one year. Phase one: provide data to NZTA Phase two: review service optimisation.	Completed 	<b>TCD: December 2025</b>  Minor changes were made to the timetables at the start of December 2025, along with the introduction of

			new bus stops in Wakefield and Motueka. The express services now stop at the Aquatic Centre. The Nelson Bus Hub has moved to Millers Acre.
Hope Bypass	Liaise with NZTA re detailed design, impacts on Council Infrastructure (including transport, stormwater, water and wastewater) and property acquisition	On Track	<b>TCD: TBA Risk to Council on timing</b>  NZTA appointed detailed design consultant in Q1 2026. NZTA will be making a presentation to the Joint Councils in the middle of March.
Regional Land Transport Plan	Liaise with NCC on the creation of a new plan for the 2027-20237 period	New - On Track	<b>TCD: July 2027</b>  Workshops will take place with the RTC in Quarter 2, 2026
Regional Public Transport Plan	Liaise with NCC on the creation of a new plan for the 2027-20237 period. This will include a full review of the E-bus service	New - On Track	<b>TCD: July 2027</b>  Workshops will take place with the RTC in Quarter 2, 2026

### Stormwater & Rivers

Richmond South Stormwater Programme	Development of a stormwater management programme for existing and future development areas in Richmond South, including cross-section designs for planned drain upgrades. Stormwater Management Plan will feed into a future structure plan for the area scheduled to commence later this year.	On track	<b>TCD: Ongoing programme of work</b>  The next report for the Strategy Finance and Performance Committee (Q2 2026) is to confirm the design of the channel for works uphill of SH6. This report has been delayed by engineering technical issues. These include the need to consider the impact of development proposals beyond the current residential zoned land and the latest stormwater model outputs. Several property purchases are in progress. The Stormwater Structure Plan work is progressing on schedule. In line with the PDO move to programme management, this project has been absorbed in Programme #1648 <i>Richmond South Infrastructure Programme</i>
Brightwater and Wakefield Catchment Management Plan	Development of a stormwater catchment management plan for the Brightwater and Wakefield Urban Drainage Areas, as required by Tasman District Council's stormwater discharge consent.	<b>Delayed old TCD Q1 2026</b>	<b>New TCD:Q3 2026</b>  The Draft CMP has been publicly consulted upon with a small number of responses received. The draft Final document is now only awaiting confirmation that PC81 is going ahead and a GIS plan update to incorporate the June and July 2025 flooding.

			The technical issue of lack of an iwi CIA is to be addressed through a request for a consent change by Water Services Business Unit staff.
Richmond Central Stormwater Business Case	Business case to assess the management of stormwater in the Richmond CBD catchment	<b>Delayed or TCD Q1 2026</b>	<b>TCD Q4 2026</b> The recent approval of funding for the new stormwater pipe through the old Bus Depot site on McGlasen Ave is a significant step forward in reducing CBD flooding. With the announcement that the Hope Bypass Project is moving ahead, the focus of Richmond central investigations have been on developing information for NZTA. This will delay the full consideration of other Richmond CBD options.
District-wide Stormwater Flood Modelling	Stormwater modelling covering the entire District at a high level to inform future CMP for smaller Urban Drainage Area, and to assist with rural stormwater management.	<b>On Track</b>	<b>TCD: Ongoing programme of work</b> The Takaka township refined modelling, building upon the existing river and stopbank model is proposed to occur in 2026. Other modelling is progressing satisfactorily, however is proposed to be spread over 2-3 years to smooth cashflow implications. Council staff have supplied information to the new national flood modelling database as requested by MBIE.
<b>Water and Wastewater</b>			
Tasman Wastewater Solutions Programme  Two parts  (1) Programme phase, Governance/ partnership  (2) Project phase (1455) to replace the current Motueka WWTP)  <i>In support of Programme Delivery</i>	The Tasman WW solutions programme has started, and the first-year Motueka WWTP project planning and investigation phase has commenced. Hui series with iwi are scheduled into calendar with facilitator Tina Porou, key staff, iwi, Wakatū and Whakarewa.  (Developing a solution for the current site of the Motueka WWTP prior to the current consent expiry in 2035.)	<b>On Track</b>	<b>Phase 1 of the 10yr Motueka WWTP solution project has commenced 1 July 2024</b>  Current Initiatives:  Removing Existing Rahui – Monitoring Plan out for final approval. Monitoring to be funded by overall project. Project going well. Estimated completion end of Q2 2026.  A governance group for the project was linked to LWDW Project Planning Group, now consideration is on governance arrangements for the 3waters committee (IBU) is being worked through, high level agreement for partnership/governance is critical for the success of the Tasman Solutions for wastewater programme.  Motueka WWTP project facilitated hui series have commenced February and will continue through to July to

			(1) support the high-level governance phase, and (2) Frame the operations phase of planning for a new WWTP for Motueka.
Inflow and infiltration management plan	Drafting business case type plan to help reduce inflow and infiltration into wastewater network within available budget (and to assist in setting budgets)  Final plan will go to the Water Services Group Manager for approval.	Delayed	Original TCD: Delayed until Q4 2025-Q1 2026  <b>New TCD: Q2 2026</b>  Planning underway to restart initiative. Work has continued in operations space to gather background and current information.
Waimea trunk water and wastewater	Working with Project Delivery to draft project brief in conjunction with hydraulic modelling work. Continuation of involvement to feed into capital programme phasing and TRMP plan changes	On track	<b>TCD: Ongoing</b>  <b>(changed from Phase 1 Feasibility July 2025)</b>  Full programme of construction projects being developed to inform timing of these future projects is being progressed
Wai-iti Dam augmentation design and consent application	Writing a resource consent application for the water intake and pipeline	On Hold	<b>TCD: Initial application delayed until later in 2025</b>  Awaiting final pieces of information to complete and landowner agreements. 95% complete.  Updates to TCD will be made once consent is submitted.  Community Infrastructure investigating other methods to progress this initiative.

## 2. Long Term Plan 2027-2037

- 2.1 Preparation of the Long Term Plan 2027–2037 (LTP) is a complex, organisation-wide programme of work with multiple inter-related components. The Strategic Planning Team has a central role in both delivering a number of key LTP components and coordinating the overall planning process to ensure legislative requirements are met and the Plan is delivered on time and to the required standard.
- 2.2 The Strategic Planning Team provides leadership, coordination, and technical expertise across a range of LTP components, working closely with Finance, Infrastructure, Environmental Policy, and service delivery teams. This includes managing dependencies between workstreams, sequencing information and advice, and ensuring that elected members are engaged at appropriate points to provide strategic direction
- 2.3 The table below outlines the key Long Term Plan components in which the Strategic Planning Team has a lead or support role, and summarises the nature of that involvement.
- 2.4

## 2.5

<b>LTP Component</b>	<b>Role</b>
Rating/Revenue and Financing Policy changes	Work with Finance to provide policy analysis expertise.
Rates Remission policies changes	Work with Finance to provide policy analysis expertise.
Financial Strategy	Work with Finance to provide policy analysis expertise.
Schedule of Fees and Charges	Lead process and coordinate fee updates and changes across the organisation.
Growth planning through the growth model	Jointly lead with the Environmental Policy Team
Development and Financial Contributions Policy review and update	Lead process
Climate Change Strategy and Action Plan	Lead process
Environmental scan	Lead process
Manage the receipt and consideration of submissions to the formal consultation	Lead process
Forecasting assumptions	Lead process
Asset management policy	Lead process
Strategic asset management plans	Lead process
Asset management plans	Directly draft several asset management plans and coordinate/facilitate the drafting of the remaining asset management plans
Three waters investment and delivery plan	Working with three waters. Role to be clarified
Infrastructure Strategy	Lead process
Water Services Strategy	Work with Three Waters to provide asset management expertise
Capital programme	Coordinate capital programme preparation across all activities

2.6 Strategic Planning Planning Team members contribute to the planning and coordination of each LTP component, recognising that there are significant dependencies between workstreams. Managing the flow of information between these components is critical to maintaining programme momentum and timely advice. Seeking direction from elected members is important to provide direction to the work in many of the components to ensure the work is well focused and time is efficiently used. The team plays a role in ensuring that the right information is presented to elected members at the right time to be able to deliver a quality LTP on time.

- 2.7 The Strategic Planning team coordinates several LTP workstreams each comprising multiple discrete projects with defined outputs and provides technical leadership across the programme. This includes ensuring robust planning processes are applied, leading engagement with Audit New Zealand, and coordinating input into the Audit and Risk Committee. ~~LTP~~. The team also works closely with the Finance team to integrate the overall capital programme across all activities.
- 2.8 The LTP 2027–2037 is more complex than previous plans due to the evolving central government reform programme and changes to legislative requirements, particularly for three waters activities. These reforms introduce new planning and reporting requirements, including the separation of some matters into the Water Services Strategy, increasing both the complexity and coordination required across the LTP programme

<b>3. Attachments / Tuhinga tāpiri</b>
--

Nil

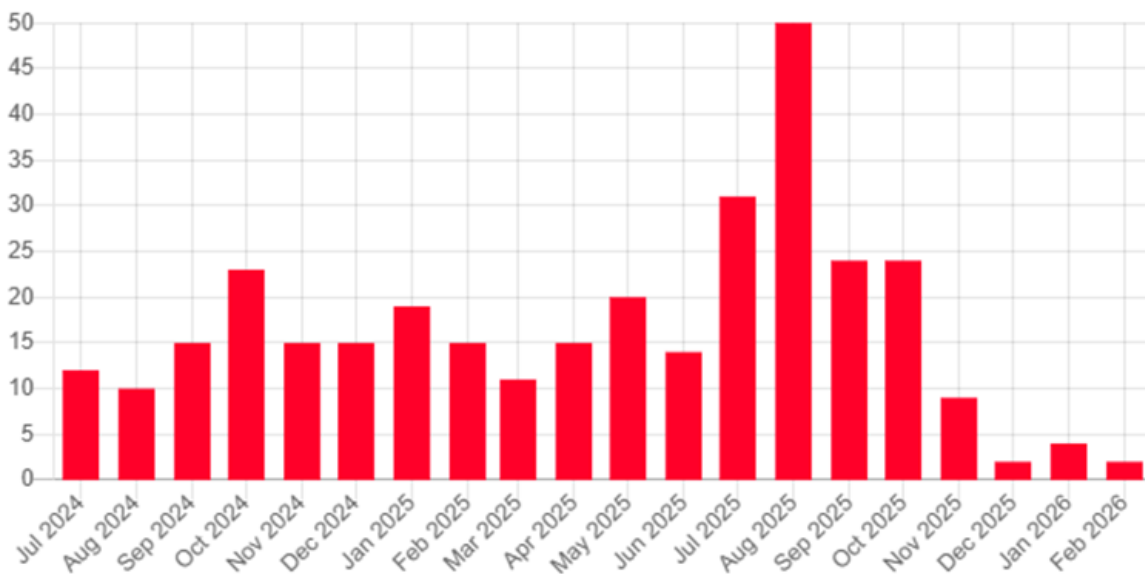
#### 4.5 TRANSPORTATION ACTIVITY UPDATE - FEBRUARY 2026

<b>Report To:</b>	Information Forum
<b>Meeting Date:</b>	18 March 2026
<b>Report Author:</b>	Jamie McPherson, Transportation Manager
<b>Report Authorisers:</b>	John Ridd, Group Manager - Customer & Community
<b>Report Number:</b>	RIF26-03-5

### 1. Customer Service Request Summary

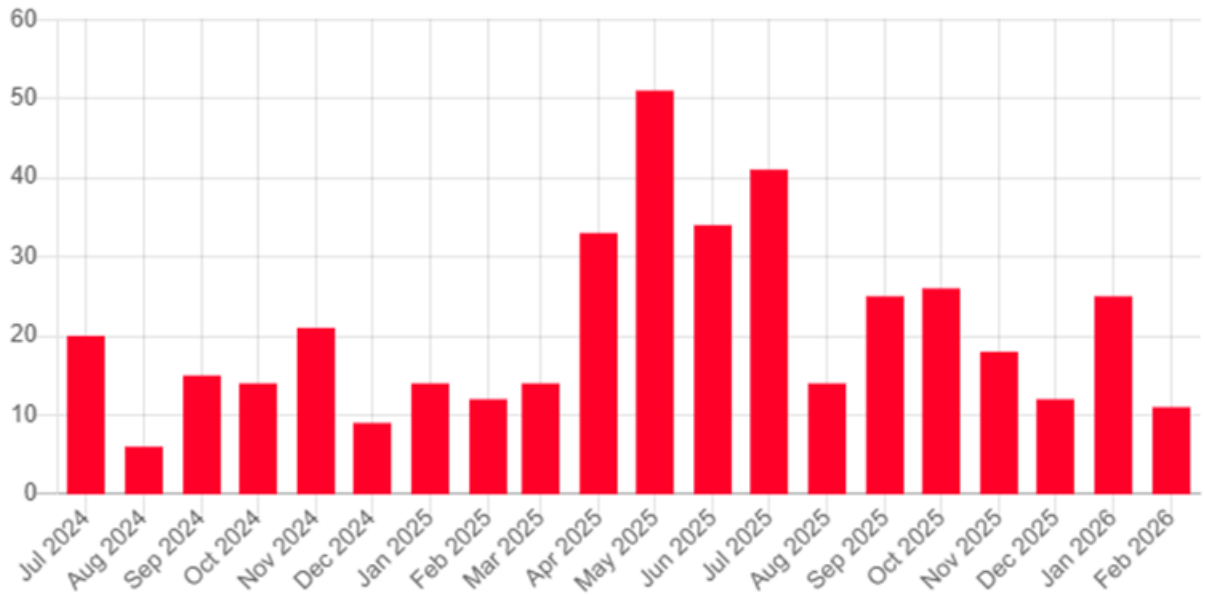
1.1 The following graphs show a summary of monthly customer service requests received for key fault types, since 1 July 2024

Sealed Pavement Customer Service Requests



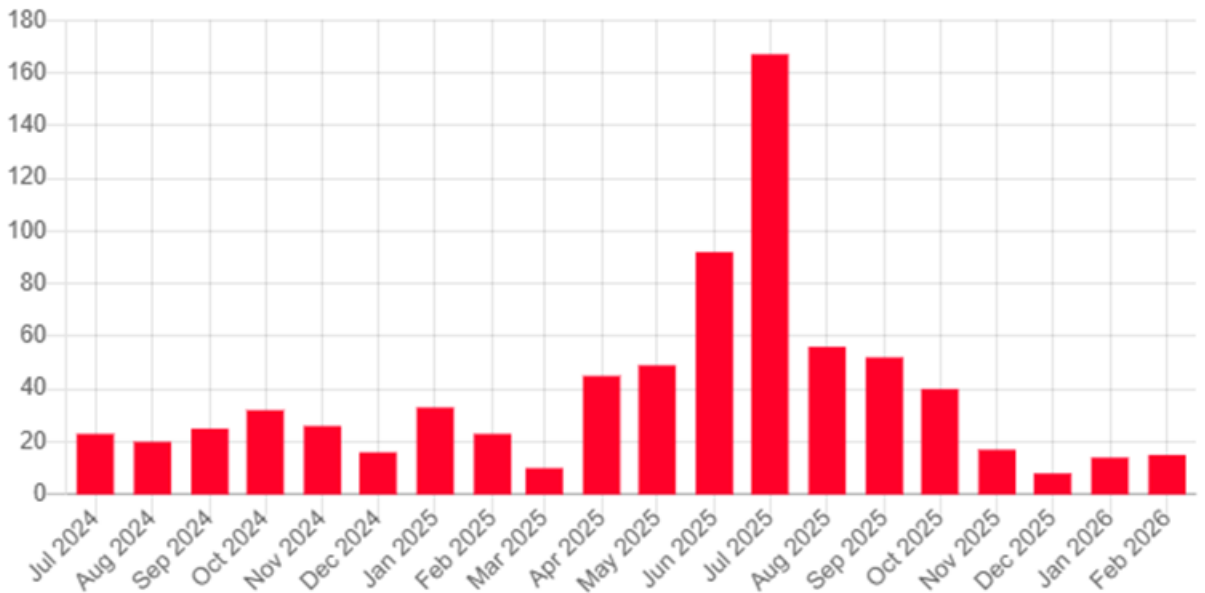
1.2 Sealed road service requests spiked after the June-July storm events but have trended down since. The low numbers received since November 2025 shows that the maintenance teams have done a good job of focussing on emerging issues such as potholes.

Unsealed Road Customer Service Requests



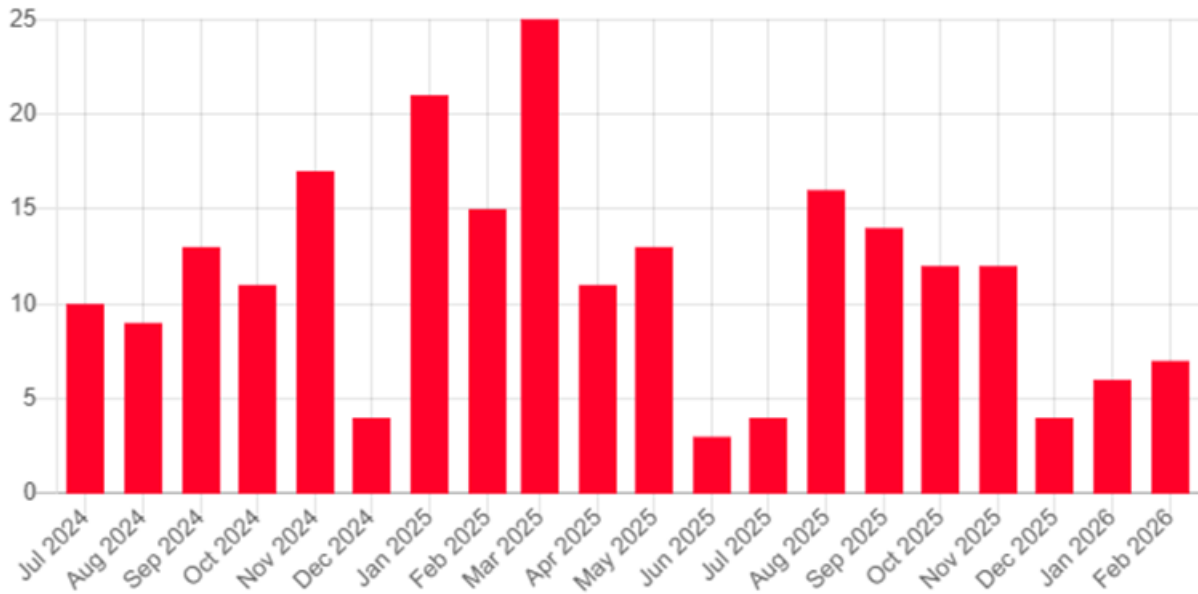
1.3 Unsealed road service requests were high through the wet autumn-winter 2025 and have remained steady as has wet weather.

Drainage CSRs



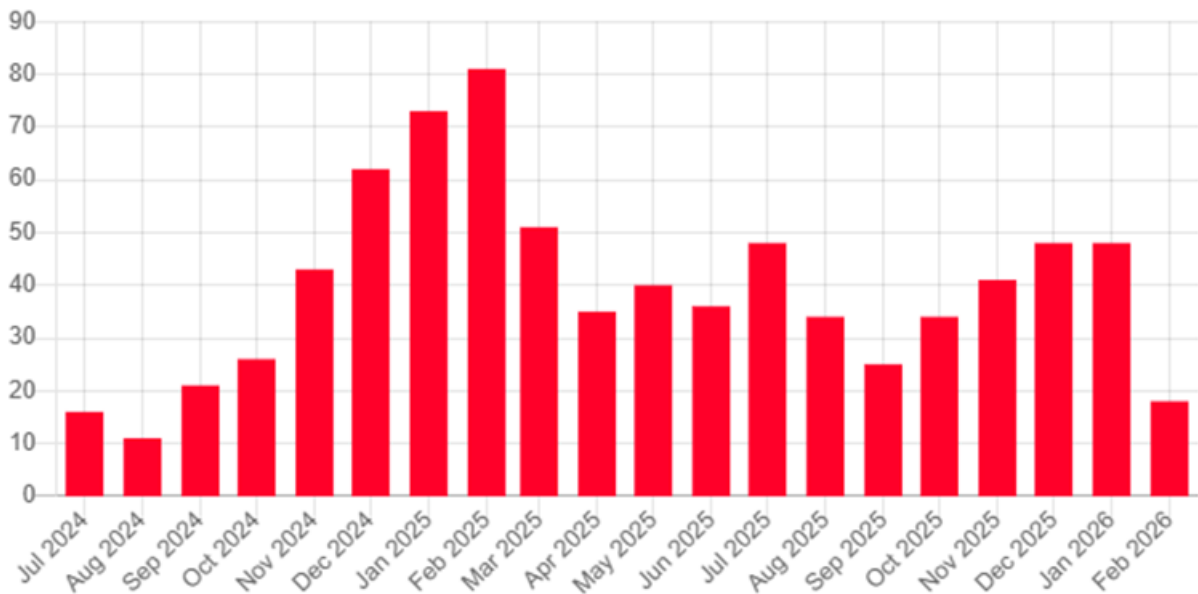
1.4 Drainage-related service requests also spiked notably in July 2025, as would be expected with the storm events.

Footpath Customer Service Requests



1.5 Footpath-related service requests have fluctuated but remain relatively low.

Vegetation Customer Service Requests



1.6 Vegetation-related service requests have remained stubbornly high, due largely to the climatic conditions that have seen vegetation growth continue steadily.

**2. Roding Activity Update**

2.1 NZTA have advised their auditor will visit us in May 2026 to carry out their regular procedural audit, which focusses on our financial systems and procurement processes as part of NZTA's investment

### 3. Alliance Contract Area

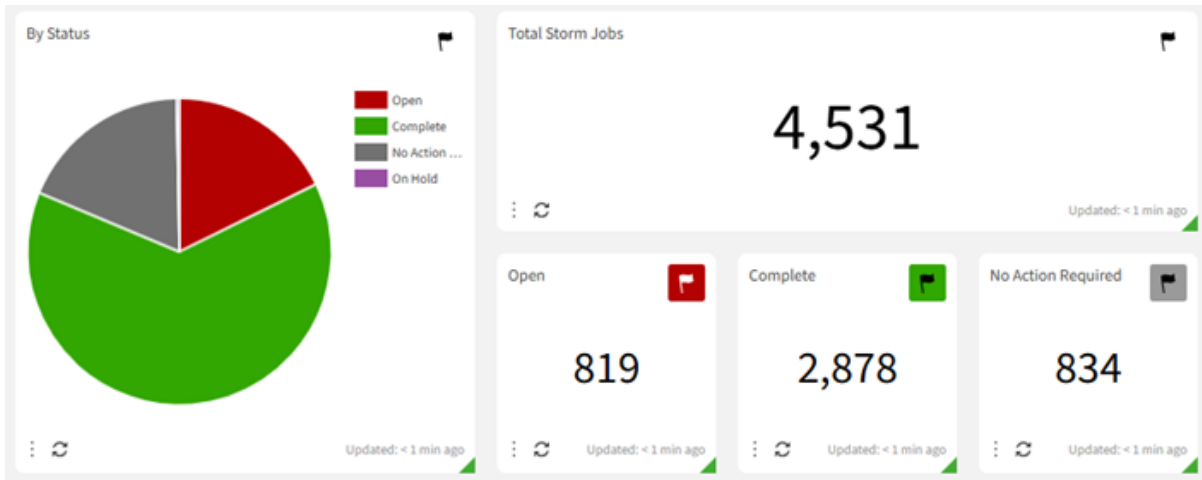
#### Storm recovery efforts – scope, assets and collaboration

- 3.1 2026 is set to be a very busy time for the storm recovery team, as we continue to work closely with the Alliance to deliver the storm recovery works safely and efficiently. Towards the end of 2025 and in the first quarter of 2026, Tasman Alliance are operating eight to ten crews throughout the network who, alongside the large dropout repair works cited below, are remediating a wide variety of faults including pavement repairs, slip clearing, bridge repairs, small road dropouts, culvert renewals, unblocking of culverts and other storm damage works.
- 3.2 In Dovedale, Taylors Contracting completed a pair of large road dropout repairs and a significant road reinstatement in December. This relationship is continuing in 2026 with work to reopen Quail Valley Road beginning in January being on target to reopen the road by the end of February.
- 3.3 Minor recovery works such as slip clearing and stormwater channel cleaning has been split into packages by geographic area with local subcontractors invited to tender for these on a lowest price basis. Several different contractors have been successful and work has progressed well.

3.4



Tasman Alliance also has a dedicated culvert cleaning crew traversing the network to clean out the many hundreds blocked by the storms. This work is complete, though we anticipate that some culverts will reblock due to silt and debris being mobile upstream in many catchments.



### Kaiteriteri-Sandy Bay Road underslip

3.5 The Alliance construction team completed the large underslip repair on Kaiteriteri-Sandy Bay Road on time before Christmas, in under four weeks. This involved a tricky road reinstatement alongside stormwater upgrades, wrapping up with road sealing in the last working week of 2025. 2026 sees them reinstating a section of the Motueka River West Bank Road lost to the Graham River in the storm. Once traffic volumes reduce to a reasonable level to allow work on Kaiteriteri-Sandy Bay and Riwaka Sandy Bay Roads, the storm recovery will lead a team comprised of multiple Downer and sub-contractor crews to establish simultaneous sites to complete works as quickly as possible in selected areas.



*Kaiteriteri-Sandy Bay Road underslip work and after completion*

### Waimea West Road, Brightwater

3.6 The storms caused significant scour damage on Waimea West Road near Snowden's Bush. The Downer construction crew completed repairs including:

- rebuilding the road edge;
- reshaping the stormwater channel; and
- reconstructing the rockwork around the culvert headwall.



*Waimea West Road dropout repair*

### Wairoa Gorge Road

3.7 A major road dropout made upper Wairoa Gorge Road unsafe for large vehicles. A road retreat was undertaken by cutting into the hillside using heavy machinery. The project will result in a 6 metre wide stable base with a 1 metre safety bund to ensure safe access for all road users.



*Wairoa Gorge Road dropout retreat*

### Eden Valley culvert

- 3.8 Following the storm event, a temporary culvert was installed to maintain resident access. A request was later received from a farming business needing stock truck access, which was not possible due to the culvert's narrow width. To resolve this, an extension was completed in one day to allow safe truck passage.



### Dehra Doon Road

- 3.9 Supply partner, CJ's, collaborated with Tasman Alliance to remove a significant volume of silt deposited by slips and flooding during the storm event. The cleanup effort was extensive, with particular focus on restoring road shoulders. These works were critical in improving drainage and preventing future water accumulation on the road surface, thereby enhancing long-term resilience and safety.



### Sealing season 2025/26

- 3.10 This year's sealing season officially started 6 October 2025. Despite the weather not being ideal for this activity, making resurfacing operations more challenging than usual, the team have made good headway, and have completed 48% of the programme as at the end of January 2026.

- 3.11 The total resurfacing area for this season is 382,047 m<sup>2</sup>, representing 5.47% of the total sealed road network. In terms of lane kilometres, that's 117.92 km, or 5.85% of the sealed lane length.
- 3.12 Our biggest challenge this year is site availability, along with the additional resource demand driven by storm recovery works. On top of the reseals, we also have 105,000 m<sup>2</sup> of maintenance sealing scheduled, which are targeted to smaller sites where cracking is present or to add a second layer of seal to previously completed pavement repairs in accordance with good practice.
- 3.13 The target of completion by end of March remains achievable. Rain days in the first quarter significantly slowed momentum as this activity is highly dependant on weather. The plan included bringing in Downer's main South Island sealing crew who are able to complete large quantities each day. They arrived in late February and are making good progress.



*Moutere Highway sealing in progress*

## 4. Non-Alliance Work

### Streetlights

- 4.1 The renewals programme for infill lighting was completed prior to Christmas 2025. Work involved infill lighting to 13 streets in Motueka and a section of Hill Street between Kingsley Place and Kihilla Road. The planned pole replacements across the District were also completed prior to January 2026, with some additional poles planned for replacement with the remaining budget.
- 4.2 Maintenance work including light cleaning is ongoing.
- 4.3 New solar bollard lights were installed in the walkway between Michael Myers and Eginton Streets, Motueka. There is still additional lighting to install but due to shading of tall shrubbery, a solar option is unlikely.
- 4.4 Dimming trial – the streetlights along Bateup Road, Richmond are being dimmed every night as part of a trial. The aim is to save on energy costs by dimming the lights by approximately 50% when there are no pedestrians or vehicles detected. Other benefits include real time feedback on light outages. The lights are dimmed down by information fed from a sensor used to monitor traffic and pedestrian flows. Light levels are then ramped up once activity is detected. The trial will continue for the next 12 months and become permanent if successful, with the possibility of extending dimming to other streetlights across the network. Similar technology is already being used on several streetlight networks around New Zealand, with

previous trials demonstrating that savings have been achieved particularly on higher traffic routes where a higher standard of lighting is in place.

- 4.5 There is a cost associated with the sensors, so if our trial proves successful, the next stage would be establishing an efficient network of sensors that could potentially deliver cost savings.

#### **Cautley Street footpath and drainage renewals**

- 4.6 This upgrade work involved replacing the old asphalt paths on both sides of the road from Waverley Street to near Hunt Street, as well as old sections of old kerb and channel and vehicle accessways, was completed just before Christmas.

#### **Footpath reseals planned**

- 4.7 The following chip seal footpaths are planned to be resealed in the next few months, these include:
- Waimea West path from near Malthouse Crescent to the Wai-iti River bridge;
  - Redvale Road path;
  - Main Road Spring Grove path near Bird Lane; and
  - Chaytor Road/Gardner Valley Road Underpass accessways.

#### **Tasman Great Taste Trail – resealing**

- 4.8 The underpass in Rush Reserve to Harley Road under SH60, was resealed recently. Also, the shared path in Brightwater near Charlotte Lane to the underpass under SH6, was also resealed.

#### **Riwaka Hall and Riwaka Rugby Club carpark resealing**

- 4.9 These two carparks were recently resealed. New markings in the rugby club carpark are due to be painted shortly.

#### **Resealing utilities sites**

- 4.10 The following sites were recently resealed:
- Marchwood Park dump station at Motueka;
  - Queen Street reservoir access; and
  - Richmond Water Treatment Plant accessways.

#### **Murchison Hampden Street Reserve - carpark reseal**

- 4.11 This carpark was resealed in February.

#### **Ngatimoti Hall & Fire Station carpark - resealing**

- 4.12 This carpark was resealed in February.

#### **Tasman Fire Station carpark, Motueka**

- 4.13 The carpark was resealed prior to December.

#### **Mapua Causeway – Mapua Leisure Park**

- 4.14 A section of the causeway was resealed in December with the work being paid for by the Leisure Park lessee.

#### **Motueka Top 10 Holiday Park**

- 4.15 Road reconstruction and resealing including some widening was undertaken to various roads within the campground with all work bar the road marking, completed prior to December.

### Pohara Top 10 Holiday Park - internal road network

4.16 Pre-reseal repairs were undertaken prior to Christmas with resealing planned for mid-March 2026.

### Motupipi Street carpark, Takaka - reseal

4.17 This carpark is planned for resealing in March 2026.

### Moturoa Island (Rabbit Island)

4.18 Prior to Christmas 2025, Cooper Road was resealed and Manuka Domain Road seal was widened. New markings are due to be painted in shortly.

### Jubilee Park South carparks and walkway

4.19 The carparks off Gladstone Road were resealed earlier this financial year and are due to have new markings installed shortly.

## 5. Golden Bay and Murchison Area

- 5.1 Work has started to repair the road outside Golden Bay High School on Meihana Street and Rototai Road. This required digging out 640 m<sup>2</sup> of road and rebuilding it with a new 500 mm deep engineered pavement. The old sumps have been replaced at the same time, as this area has a history of water ponding at the intersections due to a failed sump. Work is expected to be completed by the end of February.
- 5.2 Crews completed the high shoulder removal along East Takaka Road to prevent water pooling along the road edge.
- 5.3 Aggregate spreading and road digout repairs have been completed along Matakītaki Road. Aggregate spreading was also completed on Pupū Valley, Aorere Valley, Long Plain and Pointon Roads.
- 5.4 February work programme includes:
- road repairs on Glenview Road; and
  - aggregate spreading on Aaron Creek, James Road Right Branch Road, Plain Road and Rameka Creek Road.



*Long plain Road – removal of unused cattle stop*



*East Takaka flanking to improve drainage*



*Meihana Street test pits*



*Meihana Street/Rototai Road intersection – new sump*

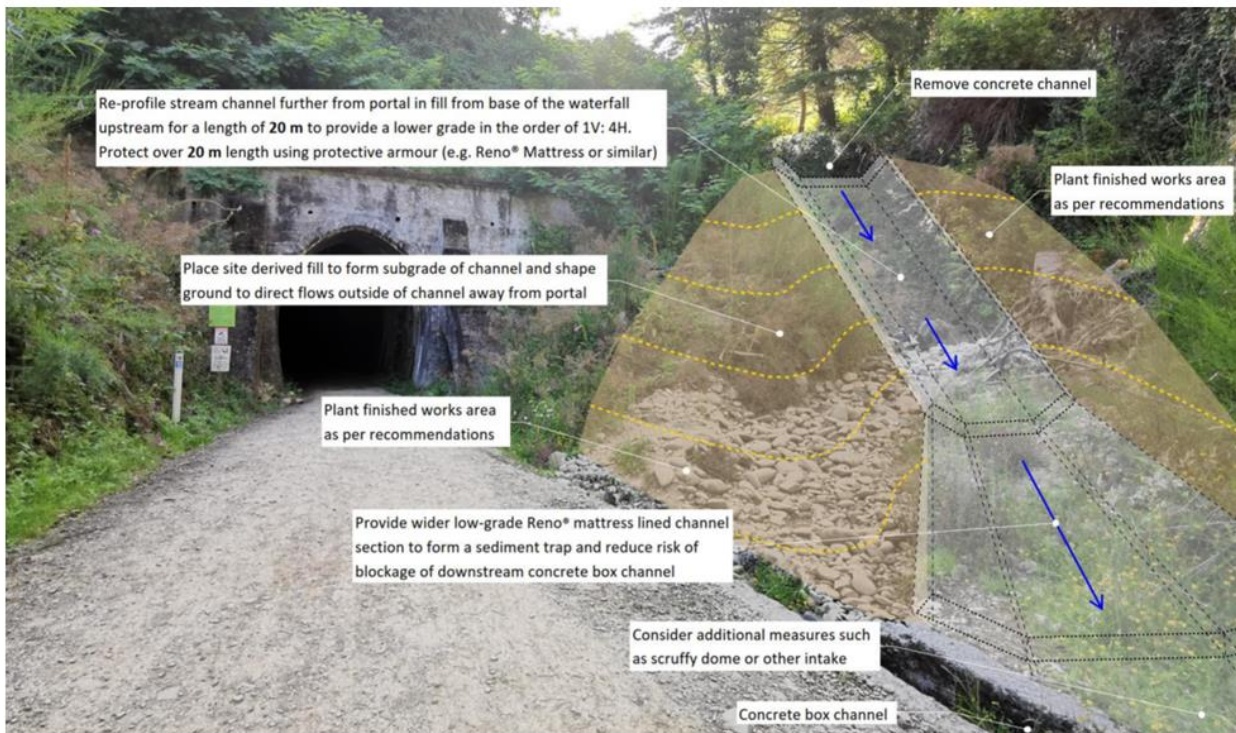
## 6. Road Safety

6.1 There have been nine serious and one fatal crash recorded in the crash analysis system to date this financial year.

Severity	Date	Location	Description
Serious	2/08/2025	EDWARDS ROAD west of Main Road Lower Moutere	Family harm incident involving vehicles.
Serious	14/08/2025	MOTUEKA VALLEY HIGHWAY 1.7km west of Mytton Heights	Car lost control turning, crossing centreline then colliding with a bank.
Serious	6/09/2025	LITTLE SYDNEY ROAD	Motorcycle overtaking a turning car.
Serious	27/09/2025	MOTUEKA VALLEY HIGHWAY 170m north of Hurley Road	Motorcycle swung wide on a bend colliding with a fence.
Serious	23/11/2025	COLLINGWOOD-PUPONGA MAIN ROAD	Car lost control on curve after consuming alcohol and drugs.
Serious	2/12/2025	CAMBRIDGE STREET intersection Queen Street	Driver waited for a southbound pedestrian to cross in front of them, then crept forward and knocked over a northbound pedestrian that had just stepped off the central pedestrian refuge in front of the car.
Serious	6/12/2025	APORO ROAD Intersection with Balwin Road	Motorcycle collided with a right turning vehicle.
Serious	31/12/2025	WAVERLEY STREET	Quad bike evading enforcement suffered seizure suspected due to heavy drinking and smoking habits.
Serious	29/01/2026	MOTUEKA VALLEY HIGHWAY 1km south of Sunday Creek Road	Three motorcycles overtaking a turning car, one motorcycle collided with the car.
Fatal	4/02/2026	WAIWHERO ROAD Intersection with Edwards Road	Vehicle driven at speed through 35km/h advisory speed sign crashing through fence and uphill. Speedo locked at 160km/h.

## 7. Tasman's Great Taste Trail

- 7.1 Much of the trail is open and most initial repairs are now complete. Several major projects remain - the Spooners Tunnel southern stream resilience work, Pokororo swing bridge repairs, and Wakefield to Wai-iti realignment/reestablishment.
- 7.2 At the tunnel, a stream above the southern portal has been forming a waterfall and retreating with gravels coming down, blocking the cycle trail and causing the tunnel to flood with stream water. If the stream continues to retreat it would destabilise the portal and put the tunnel at risk. Detailed design is progressing to re-profile and rock armour the stream as shown by the initial concept. It is intended that the physical works will occur this winter avoiding peak cycle season.



*Spooners Tunnel Southern Stream concept re-profile*

- 7.3 Forestry recovery remains in full swing around the Spooners Tunnel area meaning the trail is under active management from February to April 2026.
- 7.4 Spooners Tunnel itself remains open and walkers can access the Tunnel from Spooners carpark at its southern end during weekdays, but we expect to close the tunnel for a number of days while harvesting occurs over the tunnel. Geotechnical monitoring of the tunnel is increased while forestry operations are occurring around and over the tunnel. The forestry crew have located an unused tunnel vent which had been covered over and its location was not known, other than old historical records showing its existence.



*Regular tunnel measurements monitor the tunnel shape*

- 7.5 The Pokororo Swing Bridge has had repairs and an improved wind restraint system designed with the contractor developing a repair methodology. The contractor expects to be on-site early March with completion at the end of April.
- 7.6 The section of trail between Wakefield and Quail Valley Road remains closed with investigations for a re-route of the trail away from the lively Wai-iti River underway. A re-route utilising an unformed legal road and part of Tunncliffe Forest is being investigated. The terrain has some challenges to overcome and the parcel is currently farmed by adjacent landowners who are opposed to development of a trail along this alignment. Once investigations are complete, staff will seek a decision on the preferred option.

## **8. Community Road Safety Programme Update**

- 8.1 We are pleased that Jeni Thornborough has rejoined the team as Road Safety Coordinator.

### **Motorcycle ride forever courses – December 2025/January 2026**

- 8.2 Motorcycles have been involved in over 50% of the serious crashes on our roads this financial year. They remain a very high-risk group, so the Council (alongside ACC and NZTA) provides support for training courses that improves riders' skills and awareness of hazards, as part of our goal of reducing fatal and serious injuries on our roads.

- **Dec 2025:** 16 motorcyclists completed a silver Ride Forever course, 11 motorcyclists completed bronze Ride Forever course in December.

- **Jan 2026:** seven motorcyclists completed a silver Ride Forever course, four motorcyclists completed bronze Ride Forever course in January.

### **Child carseat checkpoint with Police**

- 8.3 On Wednesday 12 February 2026 our Road Safety Coordinator conducted a Child Carseat Checkpoint on William Street with NZ Police and Baby on the Move technicians.
- 8.4 This area was chosen as families are dropping children at early childhood centres and school.
- 8.5 Approximately 90-100 vehicles passed through the checkpoint from 8.15 am to 9.20 am.
- 8.6 The checkpoint offers free carseat checks for those with young children. Technicians checked if carseats were a) installed correctly and b) compliant with current regulations.
- 8.7 32 vehicles were inspected by our technicians, 11 carseats had to be adjusted and reinstalled correctly.
- 8.8 Police issued two non-compliant child carseat tickets.
- 8.9 NZ Police, Baby on the Move and Tasman District Council Road Safety Coordinator see great value in these checkpoints to help keep vulnerable children safe.

### **Golden Edge Nelson A&P Show November 2025**

- 8.10 Our stand was divided into 3 zones:
- **Zone 1 Prevention:** Police, impairment, AMI and Decepta Car.
  - **Zone 2 At a Crash:** FENZ St, Johns – bi-hourly extractions undertaken with FENZ, St John, Police. The activation was narrated by each agency talking about what their role is in a crash scene, the impacts it has on them and what we can do to keep ourselves safe when we are involved in/or come across an accident.
  - **Zone 3: Consequences:** Who is impacted after a crash, you/friends/family/work. What are the consequences if breaking the law why driving, can't get insurance /can't travel if receive a conviction etc. people completed a pledge, answered simple questions from what they have seen from all 3 zones, they then went in the draw to win prizes.
- 8.11 There were also multiple activity stations with hands on activation encouraging people to engage:
- Road Code Quiz - how well do you know the road rules
  - Decepta car - what's your car safety rating (as seen on TV)
  - Impairment goggles
  - Photo booth
  - Children's activity area
  - FENZ jaws of life live extraction activity
  - Prize draw entry
  - AMI Right Car Safety ratings
  - Giveaways – we again had a range of road safety messaged giveaways which are always a big success.

8.12 Partners on our site this year were:

- NZ Police
- St John
- FENZ
- AMI
- Tasman District Council
- AMI Roadside Service
- Nelson Tasman Motorcycle Safety Council
- Fulton Hogan

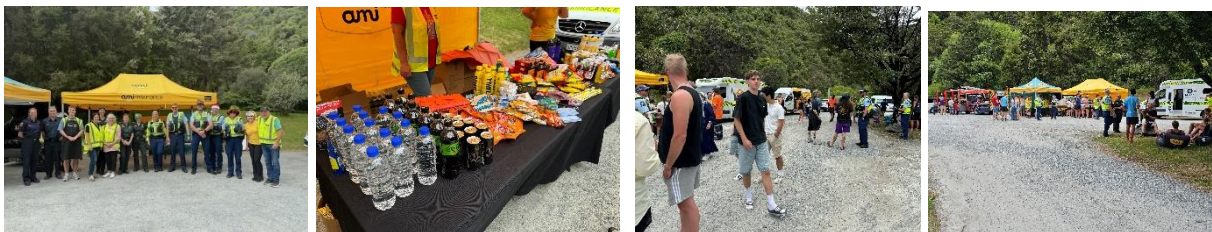
### **Kawatiri Junction – Driver Reviver – 18 December 2025, 1pm-4pm**

8.13 In conjunction with Police, St John, FENZ and IAG, the Council hosted a driver reviver event at Kawatiri Junction with:

- 602 drivers breath tested (1 drivers detected with alcohol);
- 300 plus vehicles stopped at the site and enjoyed a break after being breath tested, interaction with emergency service staff, free food, coffee and giveaways, ensuring people took a break to drive fresh as they continued their journey; and
- free health checks completed by St John, blood pressure and diabetes testing were free for public, no health issues detected.

8.14 With multiple people in each vehicle we estimate 700-850 people had some sort of engagement with us during this event. This was another very successful event with the support of multiple agencies.

8.15 We have another Driver Reviver event scheduled for **24 April 2026** with the above organisations locked in to support again.



### **Planning for upcoming activities**

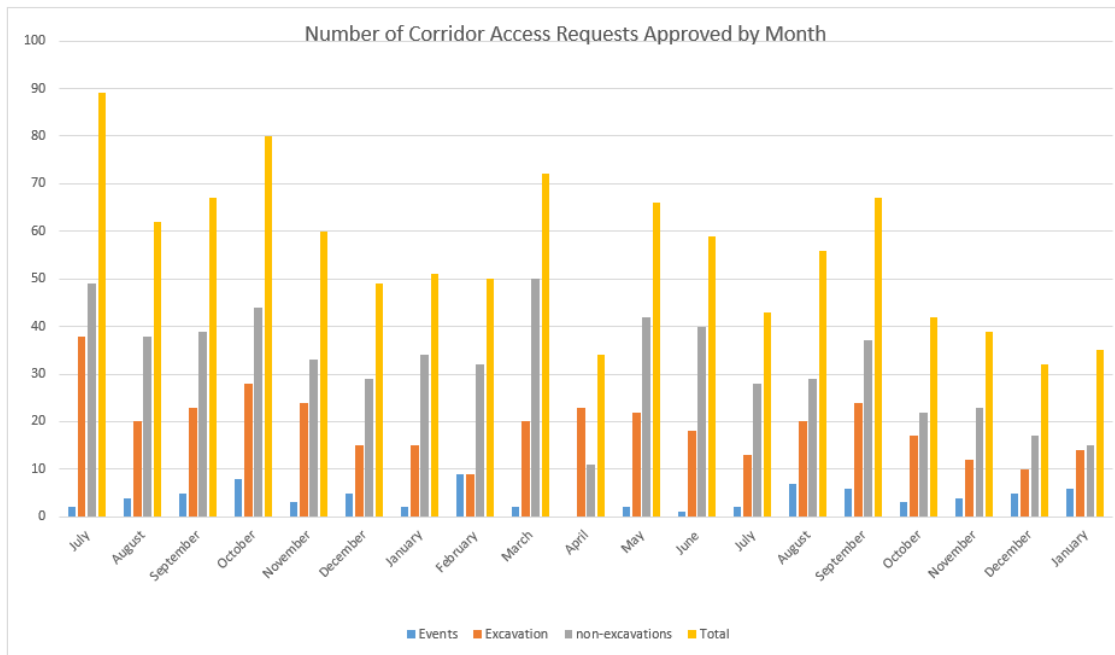
8.16 Upcoming activities include:

- supporting training courses, together with Police and SADD (Students Against Dangerous Drivers), focussed on high-risk young drivers referred from Youth Aid. This program runs well in the North Island, and Tasman/Nelson will be the first to host this workshop in the South Island;
- continue to support motorcycle rider training courses;

- in-school delivery sessions for road safety and cycle training;
- young driver event at Rabbit Island available mid May/June 2026 (Waimea/Garin College);
- Clued Up Kids – deliver a road safety section at this week-long event for schools.

**9. Road Opening Permit Management**

9.1 The graph below shows the number of corridor access requests processed and approved by month for the 2024/25 and current 2025/26 financial years. The number of requests has reduced.



**10. Attachments / Tuhinga tāpiri**

Nil

## 4.6 THREE WATERS AND WASTE MANAGEMENT REPORT

<b>Report To:</b>	Information Forum
<b>Meeting Date:</b>	18 March 2026
<b>Report Author:</b>	Mike Schruer, Waters and Wastes Manager
<b>Report Authorisers:</b>	Richard Kirby, Group Manager - Three Waters
<b>Report Number:</b>	RIF26-03-6

*You can free type your information report below, or just complete Subject Heading One and delete the others and attach your material to .*

### 1. Three Waters Overview

- 1.1 There have been some disruptions to normal operations in the water supply activity. These are outlined in this report.
- 1.2 The levels of reactive maintenance in water supply and wastewater continues to be a challenge. Staff are reviewing how best we can minimise the costs of this aspect. However, without undertaking reactive maintenance the disruption in the service delivery for those affected is very inconvenient.

#### **Taumata Arowai (Water Regulator) - Directive**

- 1.3 On Monday 2<sup>nd</sup> March, Council received a directive from the Water Regulator, Taumata Arowai (The Authority) for the Dovedale Rural Water Supply.
- 1.4 The Authority requires that Council continue to provide reminders to Dovedale customers that water requires boiling to make it potable. This has been and will continue to be done.
- 1.5 The Authority has also directed Council to provide written reports on a quarterly basis, beginning no later than 30 April 2026, detailing progress with the implementation programme for the installation of the required basic treatment barriers. Either that or Council implement an alternative supply of safe drinking water that is made available to affected customers.
- 1.6 Essentially Taumata Arowai do not accept boil water notices for extended periods. The Dovedale Rural Water Supply has had a boil water notice for many years, primarily because it is a rural water supply which was essentially installed for stock purposes. However, because the supplied water is also used for domestic purposes means that unless it is treated, the risk of contamination remains elevated. The present customers fully understand those risks and accept that the boil water notice needs to be applied. It becomes their choice whether to boil or not.
- 1.7 The irony of this directive is that although it requires Council to provide safe drinking water to the point of connection, it may not be safe by the time customers drink it. The Dovedale Rural Water Supply customers receive their daily quota over a 24-hour period.
- 1.8 In most cases, that staff are aware of, the water is discharged from Council's point of connection into private tanks, then pumped/gravity for stock and/or domestic consumption. These private tanks are mostly not protected from contamination. So, Council provides safe

water to the point of connection. Thereafter the private tank and associated plumbing may still expose the water to contamination prior to domestic consumption.

- 1.9 Staff have explained this on at least three occasions to Taumata Arowai staff over the last 12-18 months. These staff have visited site and indicated that they understood our dilemma. However, it appears to not have had any influence on the directive.
- 1.10 So Council is now committed to not only investing in finding a new source of water but also investing in the installation of the required treatment barriers to provide safe drinking water, which may still have the risk of being contaminated prior to any human consumption.
- 1.11 The Water Services Delivery Plan 2025 confirms that there is **\$6.3m** in the Annual Plan 2026/27 and **\$0.93m** in the draft Annual Plan 2027/2028 to implement the new water source and the required barrier treatment.
- 1.12 There is more detail on the Dovedale Rural Water Supply under the 'Compliance section' below.

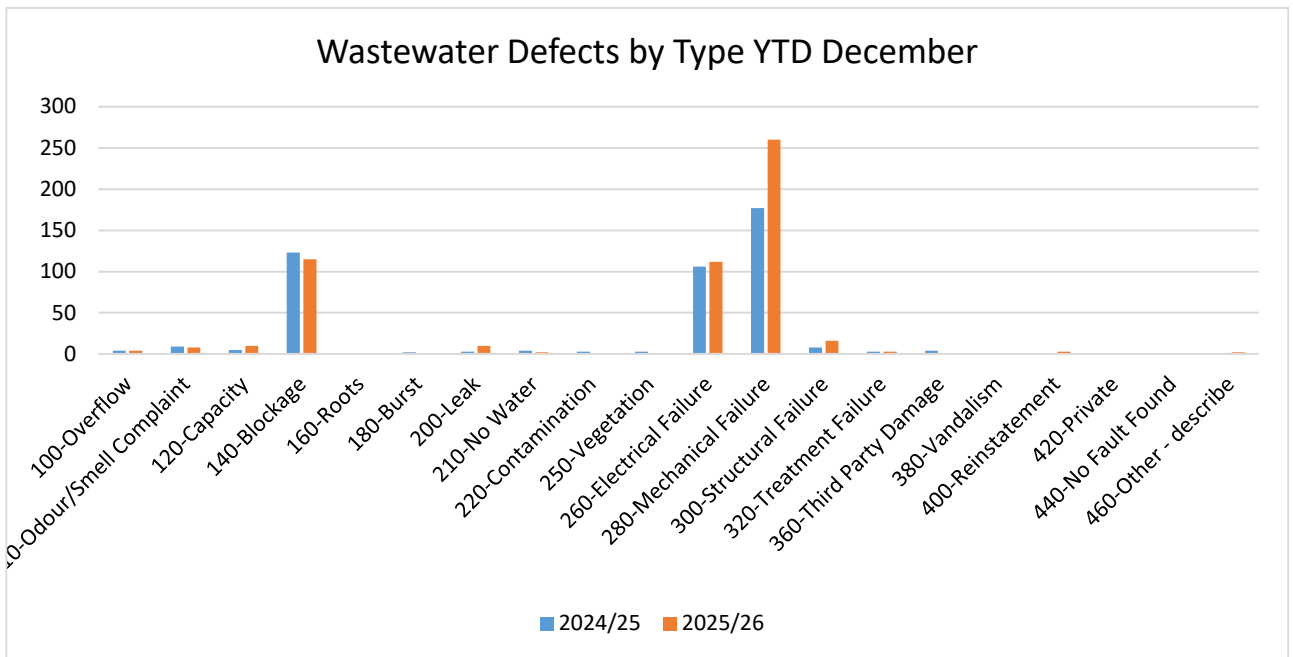
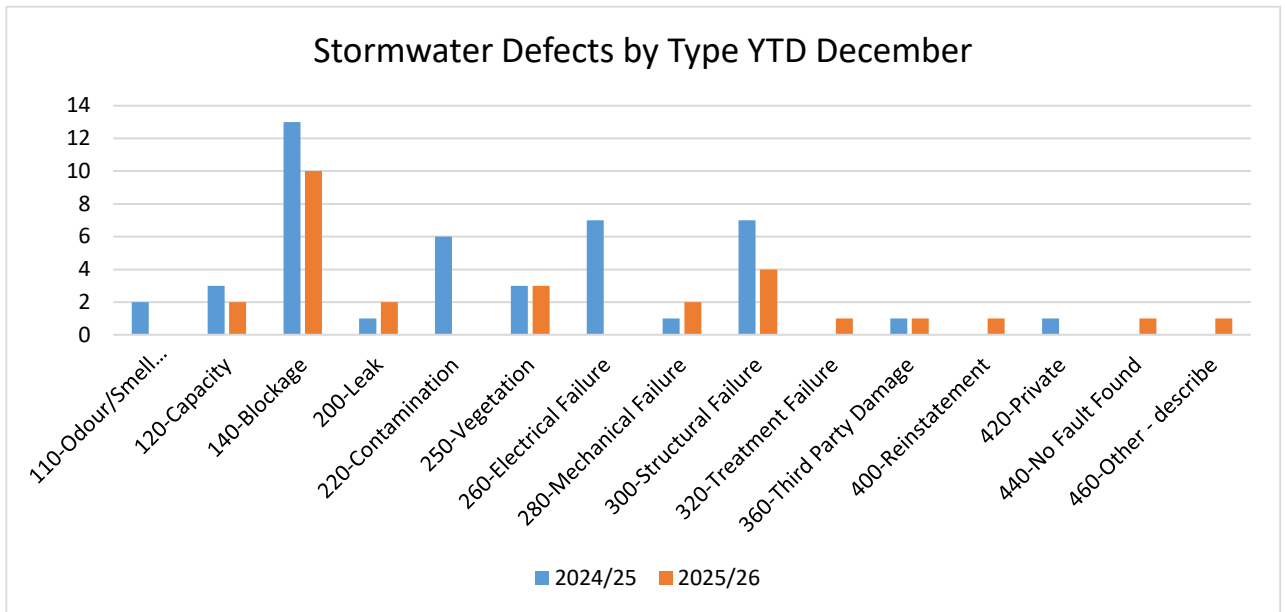
### Health and Safety Lead Indicators

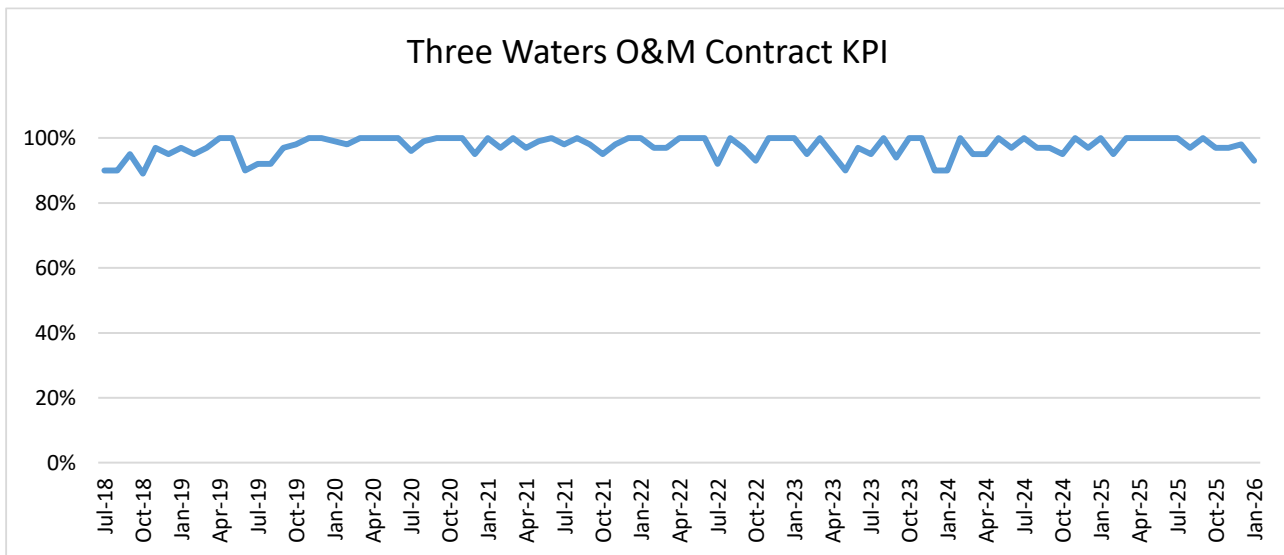
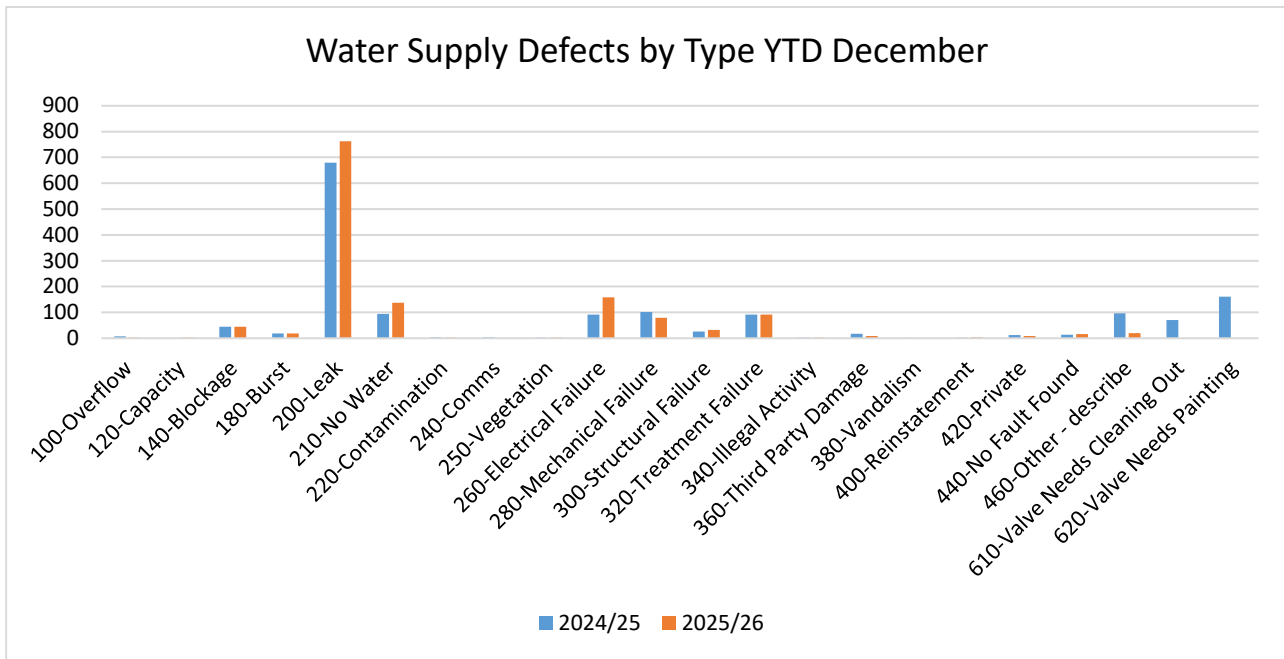
- 1.13 The following table summarises the Health and Safety audits and site observations undertaken from 1 July 2025 to 28 February 2026.

<b>Measure</b>	<b>Total</b>
<b>H&amp;S Observations</b>	<b>22</b>
<b>H&amp;S Briefings (also as part of regular meetings)</b>	<b>28</b>
<b>Number of H&amp;S courses attended by staff</b>	<b>12</b>

## 2. Operations and Maintenance

### Utilities Trends





### 3. Water Supply

**Activity Highlights:**

- Collingwood temporary Boil Water Notice issued – 23 January
- Dovedale Letter of Direction from Water Services Authority – Taumata Arowai
- Annual Drinking Water Compliance Reporting completed
- Upper Tākaka Boil Water Notice – 4 March

**Compliance:**

3.1 **Collingwood Water Supply** - A routine monitoring sample from a distribution zone sample point contained 1 *E. coli* bacteria. This is more than is allowable under the Drinking Water Standards and is an indication that faecal contamination has entered the water supply or occurred at the time of sampling. A precautionary boil water notice was issued and the Water Services Authority notified. Three days of follow-up sampling was undertaken with no further *E. coli* detections therefore the notice was lifted on 26 January. The cause of the contamination was not identified, however, the proximity of the sample tap to the campervan

waste dump station is not ideal and may have been a factor. The location of the tap is being reviewed and likely to be changed.

- 3.2 **Dovedale Rural Water Supply** - Investigations into an alternative source water are well underway. The programme and plan for the Authority will be written when further information and data is available as to the viability of the potential new source.
- 3.3 The Authority is aware of the challenges presented by the Dovedale scheme and in particular, the low quality, unreliability and vulnerability to weather events of the existing source water and intake.
- 3.4 The scheme was originally a stock water scheme in the 1970's and was eventually taken over by the Council. It has evolved into a 'Mixed-use rural' scheme supplying a population up to 700 people and is subject to the rules and regulations applying to drinking water supplies.
- 3.5 The Water Services Act 2021, and before that the Health Act, requires that bacterial and protozoal treatment barriers be in place. Currently, only chlorine is used which disinfects bacteria but is only partially effective when water quality is low (frequently). Removal of protozoa would require filtration and/or an Ultraviolet light disinfection step, neither of which are feasible given the quality of the current source. A boil water notice has been in place since 1989 due to the potential for harmful microorganisms being present.
- 3.6 Investigations into alternative sources and options for bringing the supply into compliance have been ongoing for many years with no success until recently. Test bores next to the Motueka river, just upstream of the Dove River confluence, show promise and yield and water quality testing have commenced. If these bores prove viable then planning will commence on optimal routes for raw water pipelines to the current treatment plant, what type of treatment will be required and crucially, what level of funding will be needed to achieve these upgrades.
- 3.7 If the bores are not viable, the remaining option is to take water directly from the Motueka River. This option would present additional time and cost constraints regarding consenting, in addition to being likely to be of much lower quality and therefore requiring additional treatment steps, when compared to the adjacent test bores.
- 3.8 **Mixed Use Rural Water Supply Schemes** - The Council is committed to providing compliant drinking water to the three other 'Mixed-use rural' schemes it operates by timeframes agreed to by the Water Services Authority.
- 3.9 In early 2025, The Authority required Council to impose permanent boil water notices on the Eighty-Eight Valley, Redwoods 1 and Redwoods 2 water schemes until such time as both bacterial and protozoal treatment barriers are in place. Currently, all schemes only receive chlorination for bacterial disinfection. The Council's staff have been updating the Authority quarterly regarding progress towards achieving those barriers by the agreed timeframe of mid-2027.
  - 3.9.1 **Eighty-Eight Valley** – work is underway to connect most of this scheme to the Wakefield supply via the Totara View reservoirs. The work remaining to be completed and subject to funding decisions is a section of mains pipe from the Wakefield network up to the reservoirs. Once this is complete, fully compliant Wakefield water can be supplied to most of the current Eighty-Eight Valley connections. The remaining connections, which are larger farms only, will be provided with untreated water as it will be a stock water supply (about 90% of the water supplied to this area is currently used for stock water or agricultural use).

3.9.2 **Redwoods 1 and 2** – upgrading these supplies involves commissioning two new bores, installing significant new mains networks (5km), building a new single treatment plant and converting the existing two treatment plants into booster pump stations. Mains construction and bore commissioning is in progress and the design phase for the treatment plant is about to commence. The plant is likely to include pH control via Sodium Hydroxide dosing, cartridge filtration, UV disinfection and chlorination. These treatment steps will ensure all quality requirements are met and the upgrade work is on track to achieve the agreed timeframes.

3.10 The Annual Drinking Water Compliance Reporting for the 2025 year was completed and submitted to the Water Services Authority by the deadline of 02 March 2026. The overall compliance status of the Council's water supplies remains similar to the 2024 year with no upgrades having yet been made to those supplies needing additional treatment barriers. The main areas of non-compliance are summarised below –

3.10.1 Lack of a protozoa barrier at treatment plant –

Compliance rules require that all treatment plants have barriers capable of removing bacteria and protozoa. The following four rural supplies do not have a protozoa barrier and therefore failed to comply with the relevant rules for the entire 12-month reporting period;

- Dovedale,
- Eighty-Eight Valley,
- Redwoods 1 & 2

3.10.2 Data Quality –

There are stringent rules relating to the frequency and consistency of water quality and treatment monitoring data that is used to demonstrate compliance. Where we have gaps in data, such as UV disinfection dose and turbidity, or data is not generated frequently enough (1 minute intervals), a treatment plant must be assessed as non-compliant for the relevant compliance parameter. Non-compliance in these situations does not necessarily mean that the water being produced is unsafe. Supplies particularly affected by data loss were:

- Pōhara and Collingwood

3.10.3 Technical non-compliance from 'short UV treatment runs -

Some treatment plants have very short treatment phases and during these, even a few minutes where the UV dose is lower than the specified minimum can translate into a non-compliant percentage of time. Supply particularly affected:

3.10.3.1 Kaiteriteri

3.10.4 Inadequate water quality –

Water quality thresholds must be met to guarantee adequate treatment. Supplies where significant non-compliance resulted were:

- Redwoods 1 – pH consistently lower than the specified minimum of 6.5
- Dovedale – turbidity always higher than the specified maximum of 1NTU (nephelometric turbidity units). As a result of high source water turbidity, chlorine residuals within the network were regularly lower than required.

- Eighty-Eight Valley – turbidity frequently higher than the specified maximum. As a result of high source water turbidity, chlorine residuals leaving the treatment plant were sometimes lower than required.

#### 3.10.5 Inadequate monitoring of Source water quality –

The rules for water supplies of over 500 population require continuous monitoring of pH, conductivity and turbidity.

- Redwoods 2 and Dovedale will not have conductivity monitors until treatment upgrades are made.

#### 3.10.6 Failure of equipment –

On a few occasions, equipment required for demonstrating compliance failed and/or required replacement.

- Pōhara – flow meter giving incorrect readings resulting in the calculations for chlorine contact time appearing to be non-compliant for 57 days of the year.
- Murchison – UV Transmittance meter faulted for a period of 47 days and required replacement.

The Water Services Authority will publish a national report on compliance, that is based on the data provided by Councils and other providers, in the second half of 2026.

- 3.11 A routine sample from the **Upper Tākaka Water Supply** treatment plant sample tap on 16 February 2026 contained 5 Total coliforms. Total coliforms are not necessarily an indicator that harmful organisms are present however their unusual presence can indicate that contamination in some form has occurred. Subsequent samples the following week also contained low numbers of Total coliforms but no *E. coli*. Other samples taken throughout the system showed no coliforms. Another treatment plant sample on 03 March contained > 201 Total coliforms but still no *E. coli*.
- 3.12 A precautionary boil water notice was issued and the Authority notified because these numbers are particularly high and demonstrated that whatever contamination that had occurred was continuing and potentially increasing. It is suspected that the old treatment plant, that is still connected to the system below the main plant and reservoirs, may be the source of the coliforms. The supply has been manually chlorinated, and work will be undertaken to bypass the 'old' treatment plant site and pipework. The boil water notice will remain in place until all work is completed, and staff have assurance that contamination has ceased.
- 3.13 **Brightwater Water Treatment Plant**– actuated valve fault 21 January 2026. During work to re-install the repaired electric actuator for the UV reactor isolation valve the alignment to the valve shaft was connected incorrectly. Outcome was that for a 24-hour period UV disinfection only occurred 50% of the time because position feedback was false. Contractors discovered and rectified the fault at 1600hrs 22 January 2026. One micron filter cartridges had been previously replaced on 19 January 2016 providing a protozoa barrier for the plant. Follow up reservoir turnover and FAC sampling was undertaken. Incident continues to be under investigation. Taumata Arowai were notified of the incident by staff.

#### Enforcement:

- 3.14 One accidental damage event on Maisey Road in Redwood Valley where a contractor hit a lateral while installing a power cable. Investigation ongoing but the contractor responsible will be issued a warning and information on requesting service locates.

- 3.15 One instance of restrictor tampering on Redwood Valley Road where the restrictor had been relocated to new tanks without the Council's approval. The landowner was issued a warning and the restrictor will be relocated to the boundary. The existing water pipe on the property will become privately owned, removing the risk to the Council.

#### Operations Update:

- 3.16 **Murchison Water Supply** - A burst occurred on the 50-year-old 150mm AC water main on Fairfax Street, Murchison, on Tuesday 17 February 2026 at approximately 9.00pm. The failure cut supply from the treatment plant into the network and triggered the reservoir earthquake valve, resulting in a loss of supply to the township. Repairs were completed at 4.30am, and supply was reinstated by 9.30am on 18 February 2026 following extensive flushing of the network. This pipeline has been scheduled to be replaced starting the week of 16 March. The water pipe renewals budget for 2026/27 has been brought forward to undertake these urgent works meaning there is no renewals budget for water mains next year.
- 3.17 **Richmond Water Supply** - A burst occurred on the 35-year-old 150mm PVC water main on Chelsea Avenue, Richmond, on Thursday 19 February 2026 at approximately 6.00pm. The affected section was isolated to enable investigation and repair. Extensive concrete breaking was required to expose the main. Repairs were completed and supply was reinstated by 9.00am on 20 February 2026
- 3.18 **Richmond Water Supply** - A burst occurred on the 34-year-old 150mm PVC water main on Valhalla Drive, Richmond, on Tuesday 24 February 2026. The affected section was isolated, repairs were completed, and supply was reinstated.
- 3.19 **Motueka Water Supply** - A leak occurred on the 37-year-old 50mm PVC joint on Thorp Street, Motueka, on Thursday 26 February 2026. The leak jetted onto an adjacent 150mm PVCU water main installed in 2021, resulting in a secondary burst at approximately 6am. Elevated network flows at the treatment plant caused the plant to shut down on low level. Once the treatment plant was restarted, our contractor isolated the leak location without the need to further interrupt supply to properties. Both faults were repaired and normal operation was restored by 4pm.
- 3.20 A burst occurred on the 37-year-old 200mm PVC water main on Fearon Street, Motueka, on Thursday 26 February 2026 at approximately 5.30pm. The affected section was isolated, interrupting supply to 21 properties. Repairs were completed and supply was reinstated by 8.30pm.
- 3.21 Leak detection has been scheduled for March for the waters supplies in Motueka, Wakefield, and Brightwater. Motueka has experienced increasing night flows and several recent bursts, which warrant further investigation. Wakefield and Brightwater are both relatively fragile systems, and following the high-demand summer period, undertaking leak detection will help identify any emerging issues and reduce the risk of unexpected failures.

## 4. WASTEWATER

#### Activity Highlights:

- Odour problems at Goodman Ledger wastewater pump station (WWPS).
- Increasing pathogen concentration in Motueka wastewater treatment plant (WWTP) filtrate.
- Poorer than usual nitrogen removal at the Motueka WWTP.

**Compliance:**

- 4.1 The Motueka WWTP filtrate pathogen indicator (*E. coli* and faecal coliforms) concentrations have risen above the normal levels. Recent results have ranged between 30 to 80 faecal coliform forming units (cfu) per 100 ml, typically the output from the filtration membranes is below 10 cfu/100ml. For context, as per the Land Air Water Aotearoa website, to get an excellent bathing water quality grade the faecal coliform concentration must be below 130 cfu/100ml.
- 4.2 The rise in concentration means that we have become non-complaint with one of the discharge resource consent conditions. Investigations are being done to find out the cause of the increasing concentration.
- 4.3 Over the last month ammonia/nitrogen removal at the Motueka WWTP has been less than typical for this time of the year. The most likely cause would be the cooler/wetter than normal January. These cooler conditions have also been cited as contributing factor in the under-performance of the Bromley WWTP in Christchurch. This natural system is strongly influenced by environmental conditions; we expect removals to improve when these conditions get better. The reduced removals mean that we have become non-compliant with some the discharge resource consent conditions. By July this year we will also have installed a new aerator in the main pond. A secondary benefit of this installation may be improved nitrogen removal.
- 4.4 The pathogen indicator level in the discharge from the Collingwood WWTP UV unit was higher than usual during the reporting period. On two occasions resource consent conditions were breached. This was due to higher suspended solids levels in the discharge. This WWTP is planned to be de-sludged this year.

**Operations Update:**

- 4.5 The six-monthly cultural health indicator assessment was undertaken by representatives of local iwi. A report, highlighting areas for improvement, will be submitted to council in due course.
- 4.6 Discussion about the relocation of the Motueka WWTP have been restarted with local iwi representatives. This relocation is due to happen by 2035, when the consent at the existing WWTP location expires.
- 4.7 Three operational issues compounded to cause odour issues at Goodman Park Wastewater Pumping Station in Motueka in late February, which have led to odour complaints.
  - 4.7.1 The activated carbon in our odour filter needed replacing, and the carbon delivery was delayed until 25 February.
  - 4.7.2 Our H<sub>2</sub>S sensors on this filter needed recalibration, so they were not showing us the correct gas levels. They were recalibrated on Wednesday 25 February.
  - 4.7.3 A piece of instrumentation had been replaced in December 2025, changing the set point of the pumps causing the wet well levels to operate at a higher level. This was picked up and adjusted on Sunday 01 March, improving the turnover in the wet wells.
- 4.8 In addition, selected manholes were washed and disinfected and had their lid seals replaced.

## 5. STORMWATER

### Activity Highlights:

- Environmental DNA samples were collected at Poutama Creek
- A successful meeting with Lake Killarney residents in Tākaka was attended by the Stormwater team, explaining that the public stormwater network is now disconnected from the lake.

### Compliance:

- 5.1 To assess how we are impacting the receiving environment and to assess how the storm water channel enhancement that was undertaken in Poutama Creek, Richmond last year is performing, environmental DNA sampling was undertaken. The results showed what species are living there and forms a baseline to compare future samples to. It is encouraging to confirm that at three native fish species are found in the creek. The analysis also revealed that a native New Zealand clam species (*Sphaerium novaezelandiae*) can be found there. Results can be viewed here: [Wilderlab eDNA Batch Report](#)
- 5.2 The Stormwater Quality Specialist attended a community meeting about the history and future of Lake Killarney. Besides answering stormwater related questions, she also reported on the history of stormwater discharges into the lake and was able to clarify that no more stormwater is directed from the council stormwater network into the lake.



Figure 1: Lake Killarney Community Meeting

### Operations

- 5.3 It has been a relatively quiet time for Stormwater over the last few weeks with settled weather conditions, apart from a cloudburst over parts of the region on Tuesday 3 February. This caused concerns with the residents of Kahu Close, Kaiteriteri, where water was flowing over Martin Farm Road again. While their stormwater network is private, a stormwater engineer and a colleague from resource consents met with some concerned residents. Staff outlined options they could consider. Their main concern is the estuary and creeks which have a build-up of separation point granite, which is causing elevated water levels in their wetland.

- 5.4 We have been carrying out investigations of our underground network around the Lower Queen Street – Stratford Street, Richmond area and comparing with our GIS records. More investigations will be carried out to provide correct data to the Hope Bypass project.
- 5.5 During the heavy rain of 3 February, we inspected several stormwater treatment devices. An inspection of the Jellyfish stormwater filter that treats the Poutama Street catchment indicated areas where we will need to investigate further. We will continue to monitor treatment devices and are engaging a Contractor to service and report on performance of them. This contractor specialises in servicing stormwater treatment devices and visits the region every six months to service stormwater treatment devices.



**Figure 2:** Discharge from Poutama Street

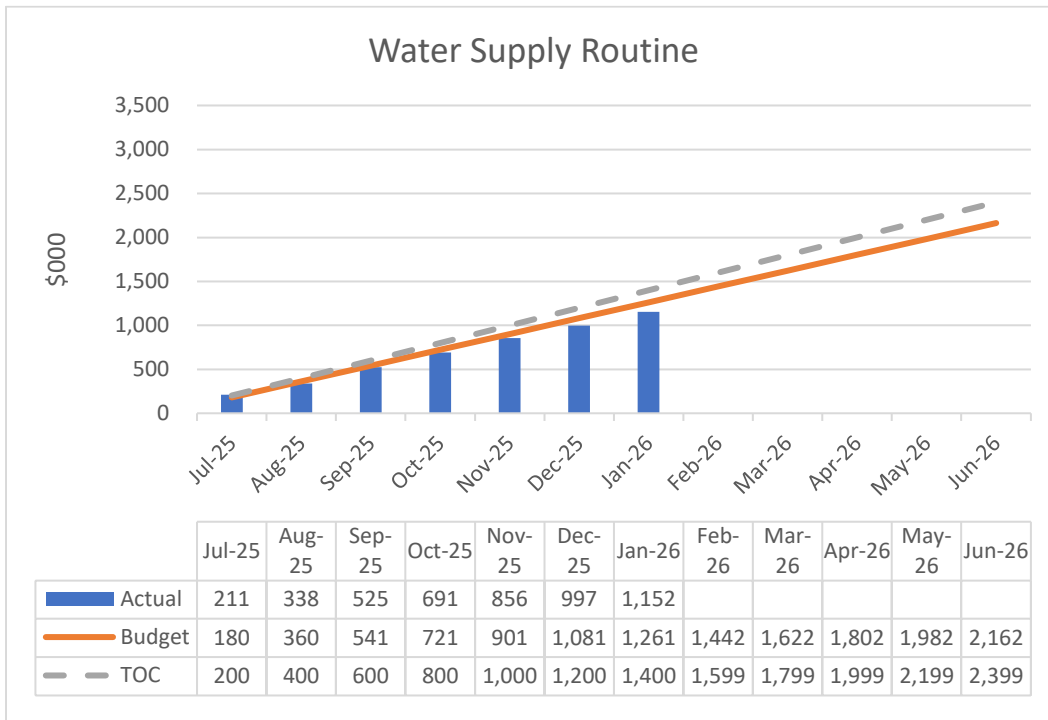
- 5.6 During the summer we have been frequently meeting with our grass maintenance contractor to discuss and find the balance between cost, safety, amenity, level of service, weed control and stream ecology along our stormwater channels. This balancing act is ongoing.



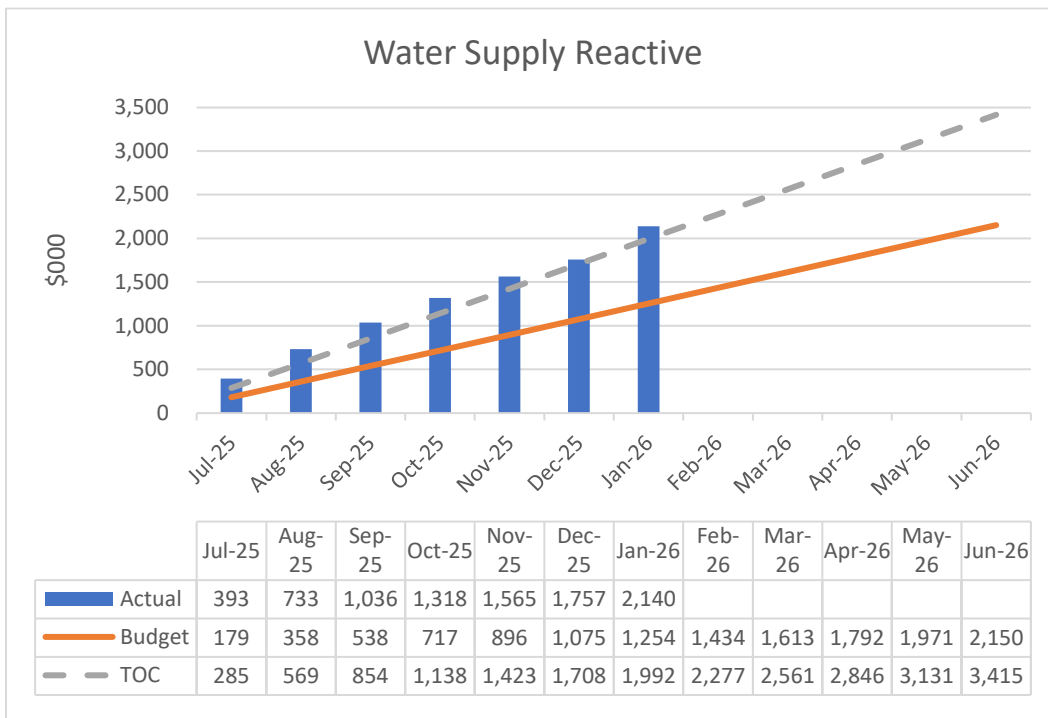
**Figure 3:** Example of a good balance of open channel maintenance

**6. FINANCIAL UPDATE**

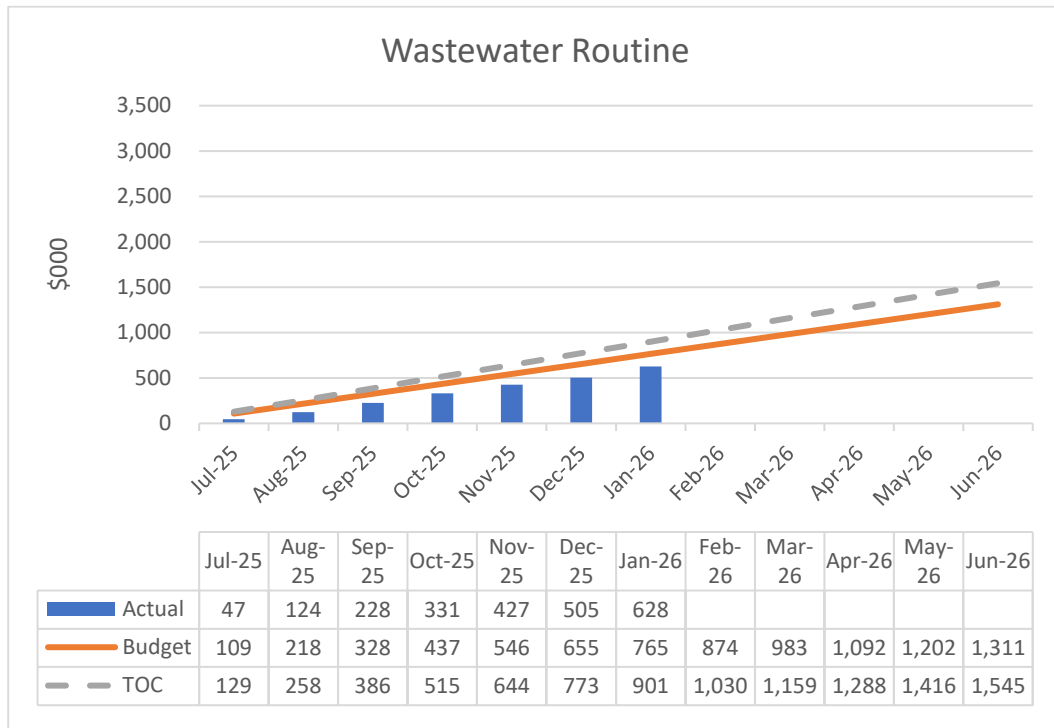
6.1 Water Supply Routine is tracking under budget.



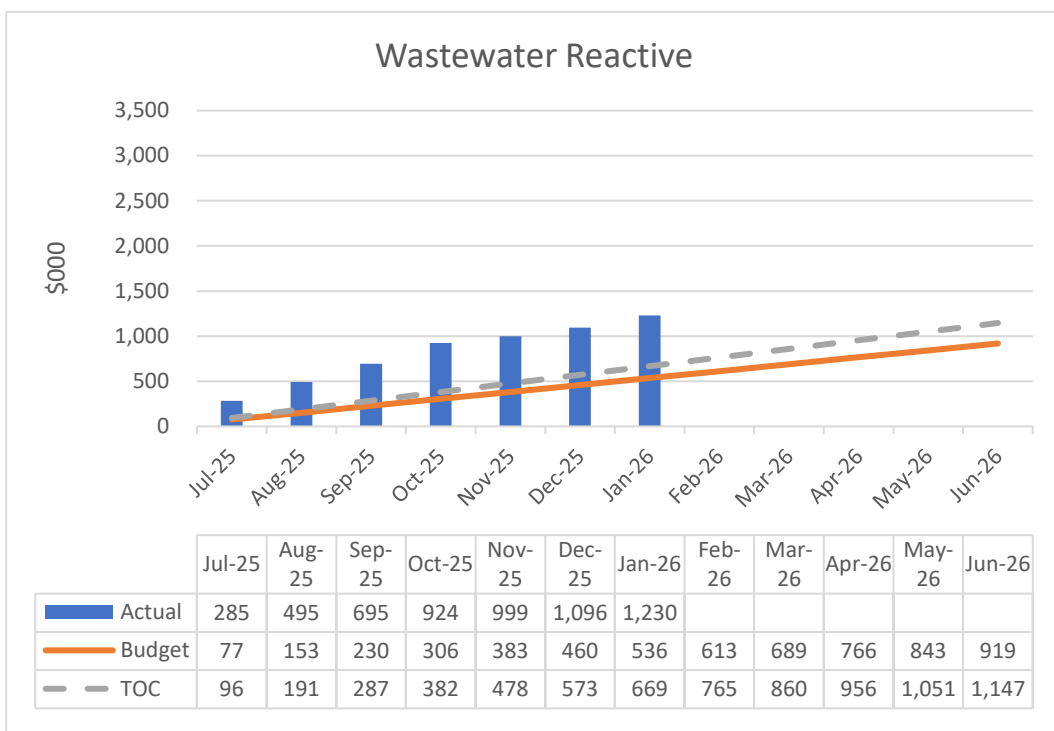
6.2 Water Supply Reactive costs are well over budget but tracking closely to the Total Outturn Cost. This includes \$300k of expenditure related to the June weather events. Refer report to Information Forum 11 February 2026.



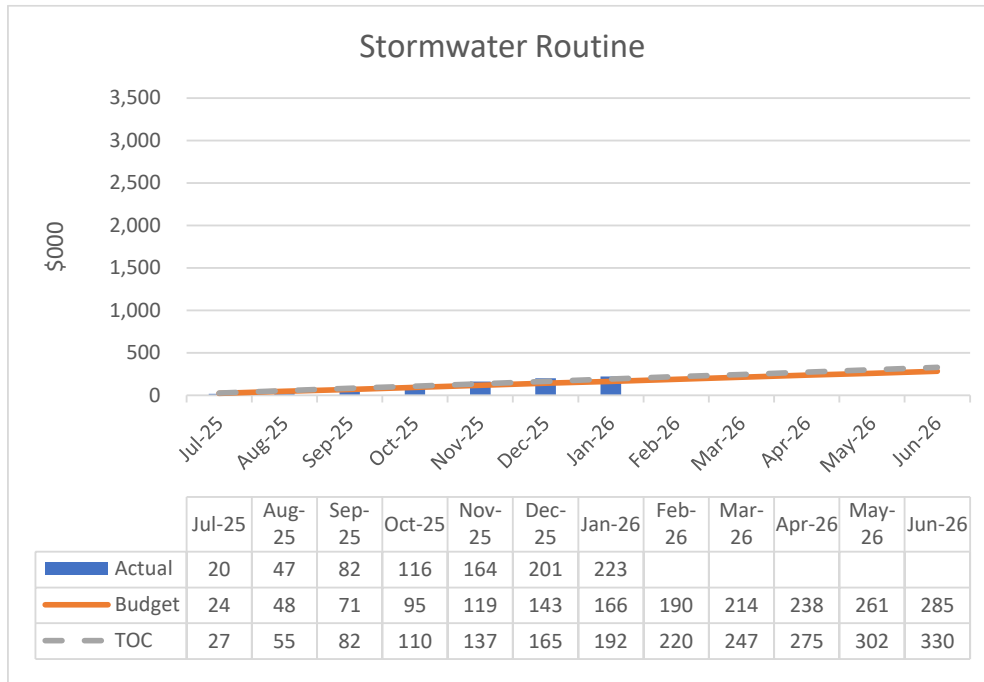
6.3 Wastewater Routine costs are tracking under budget.



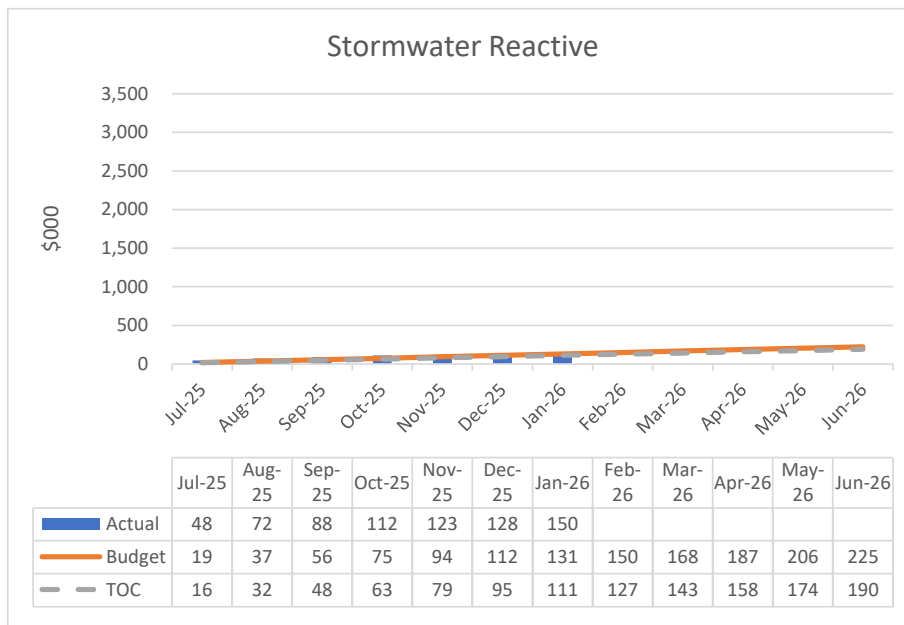
6.4 Wastewater Reactive costs are over budget. This includes \$350k of expenditure related to the June weather events. Reactive maintenance at Motueka wastewater treatment plant total \$100k including over pumping, generator issues and O-ring replacements on the membranes. Pump station reactive maintenance is high due to power outages or failures and significant faults at Riwaka main pump, Ruby Bay, Alpine Lodge (St Arnaud) pump station and Beechnest Drive (St Arnaud).



6.5 Stormwater Routine costs over budget due to additional weed control.



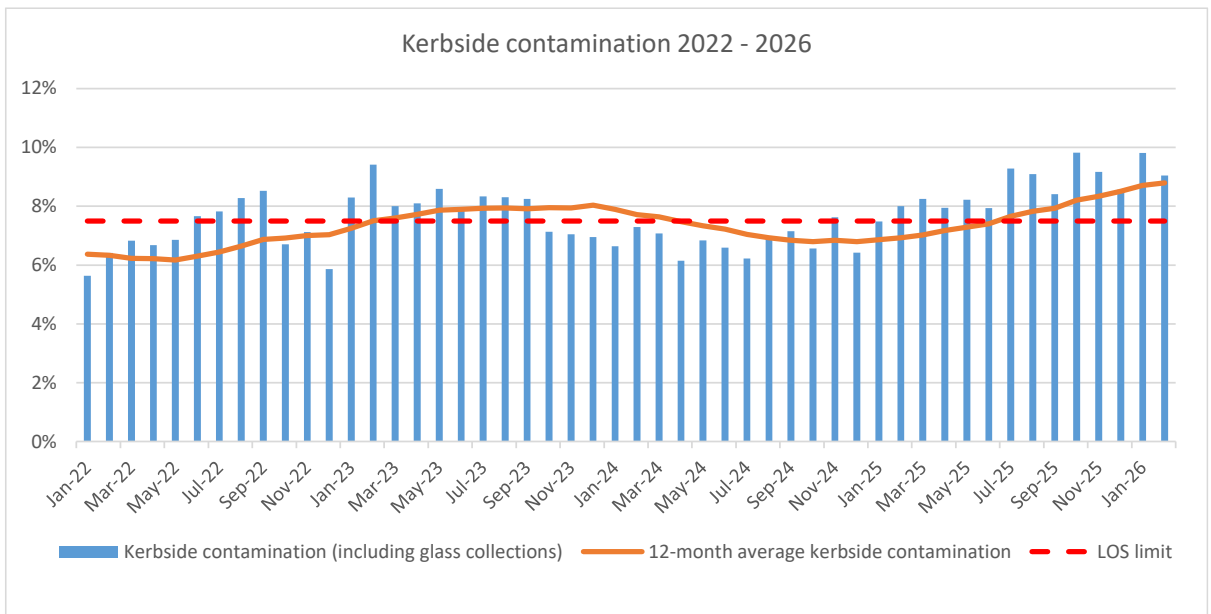
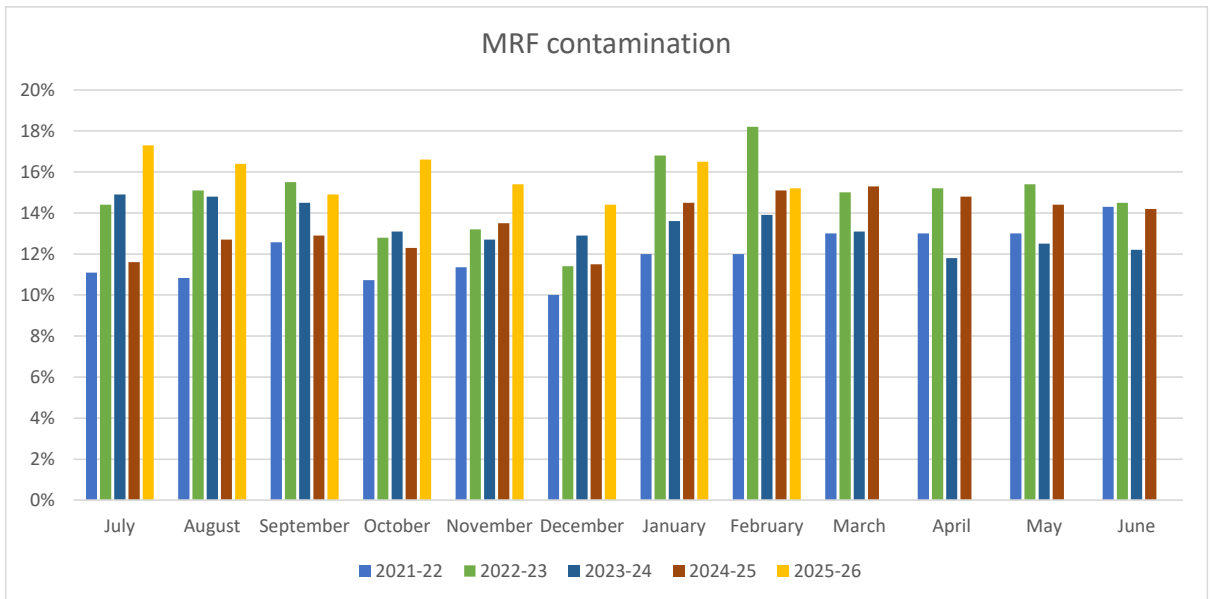
6.6 Stormwater Reactive costs are on budget.



**7. WASTE MANAGEMENT AND MINIMISATION**

**Activity Highlights:**

- Kerbside collection activity has eased following the busy summer period
- The new layout at the Richmond Resource Recovery Centre is working well.
- Battery disposal bins have now been installed at all Resource Recovery Centres.
- The new office at the Richmond Resource Recovery Centre is expected to open in March.

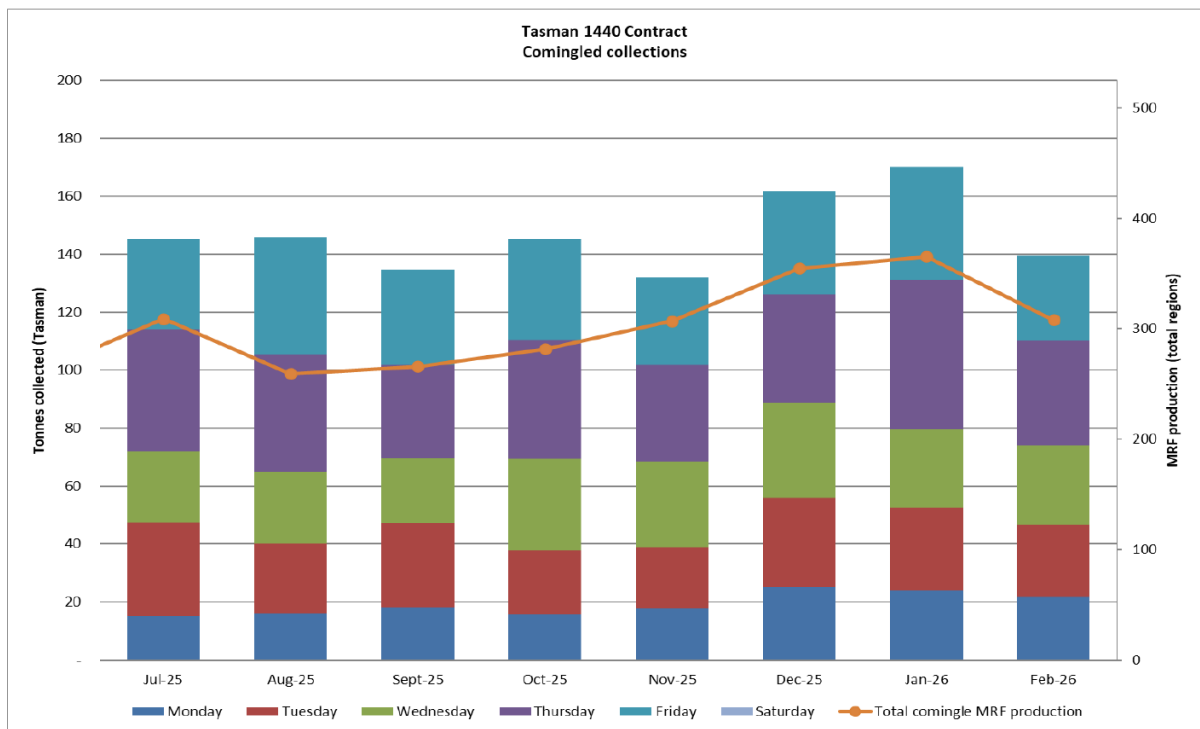


**Compliance:**

7.1 There have been no non-compliance notices for this period.

## Operations Update

7.2 Kerbside collection activity eased in February, with the move out of the summer peak period.



7.3 A total of 406 kerbside recycling audits were undertaken during February, 99% passing and 1% failing due to contamination – this is significant increase in pass rate on the previous monthly audits.

7.4 Recycling contamination at our Materials Recovery Facility (MRF) and in kerbside recycling increased in January and dropped in February, with the 12-month average increasing for both activities.

7.5 The new offices at Richmond are progressing well. Due to changes with the access and electric vehicle charging points the programmed hand over date has been extended by a week to 5 March 2026. A solar and battery system at the new office is now live. This system also powers the kiosk and weighbridge which will eliminate disruption caused by power outages.



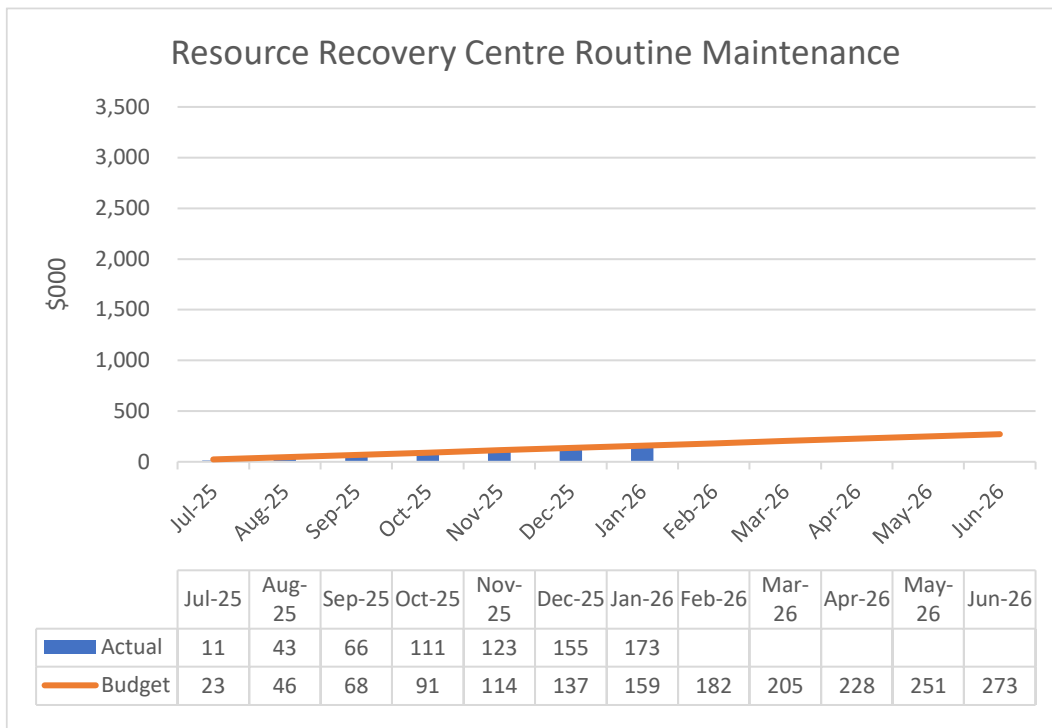
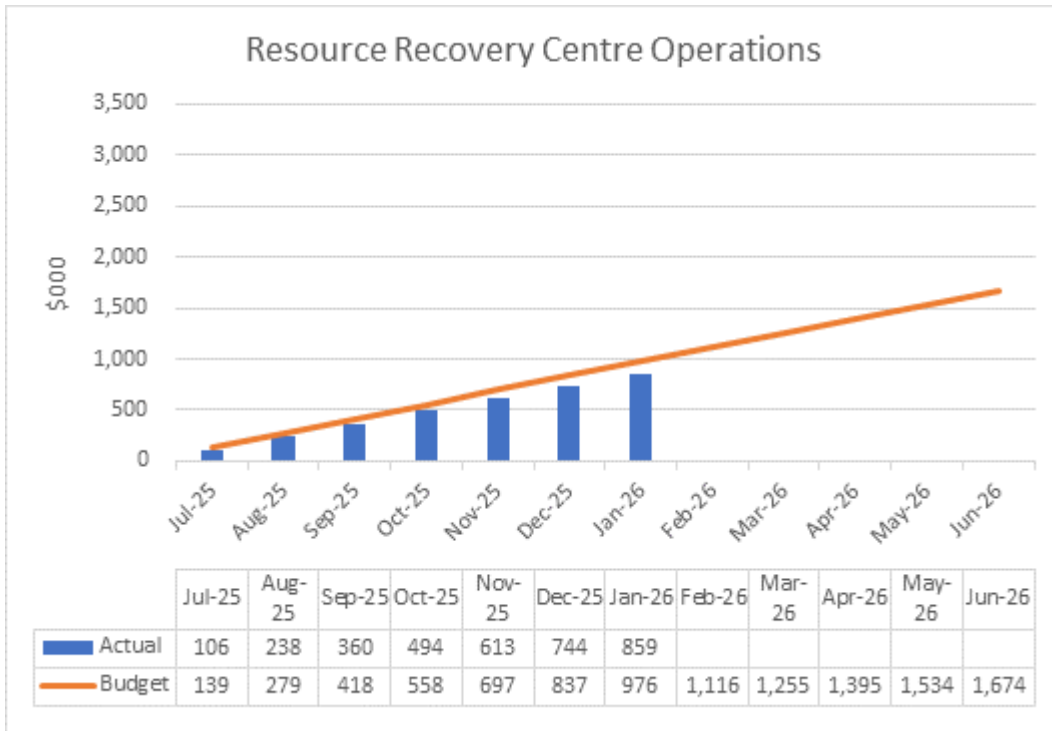
*Figures 4 and 5: Richmond Resource Recovery Centre - new office path and steps and solar and battery system*

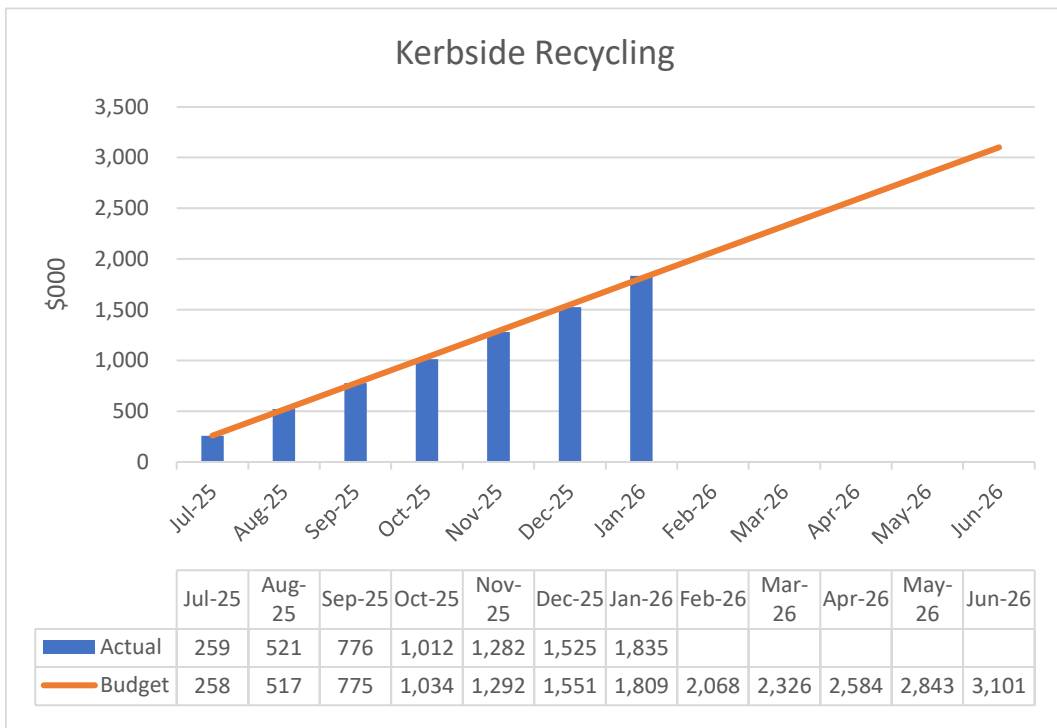
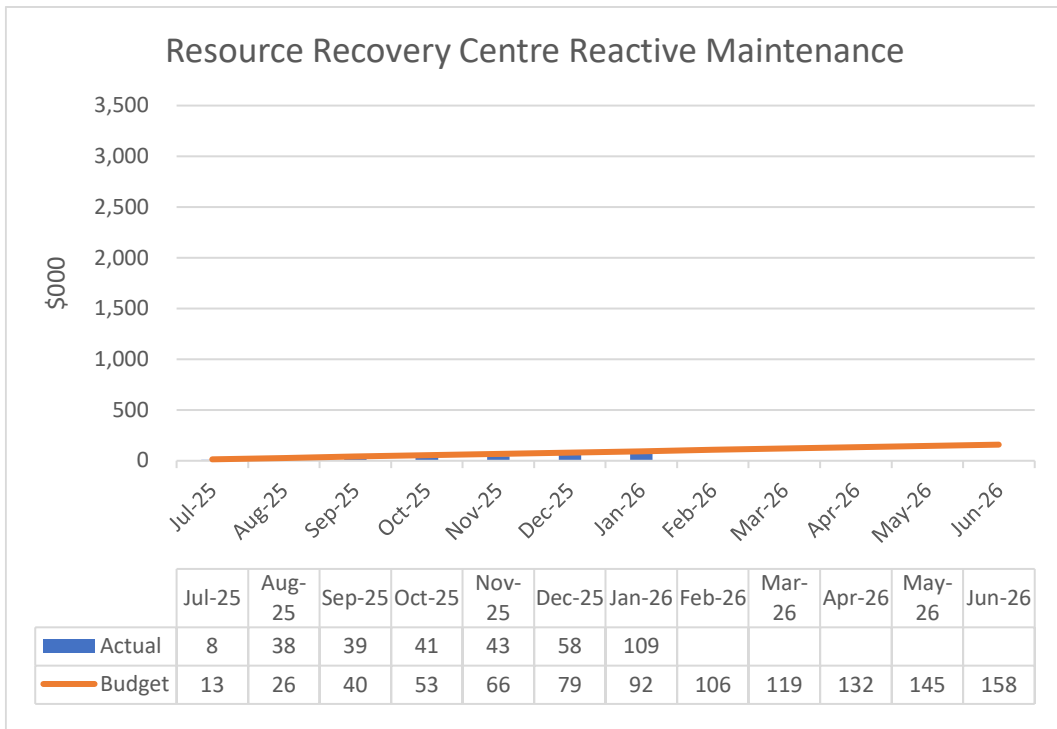
### **Waste Minimisation**

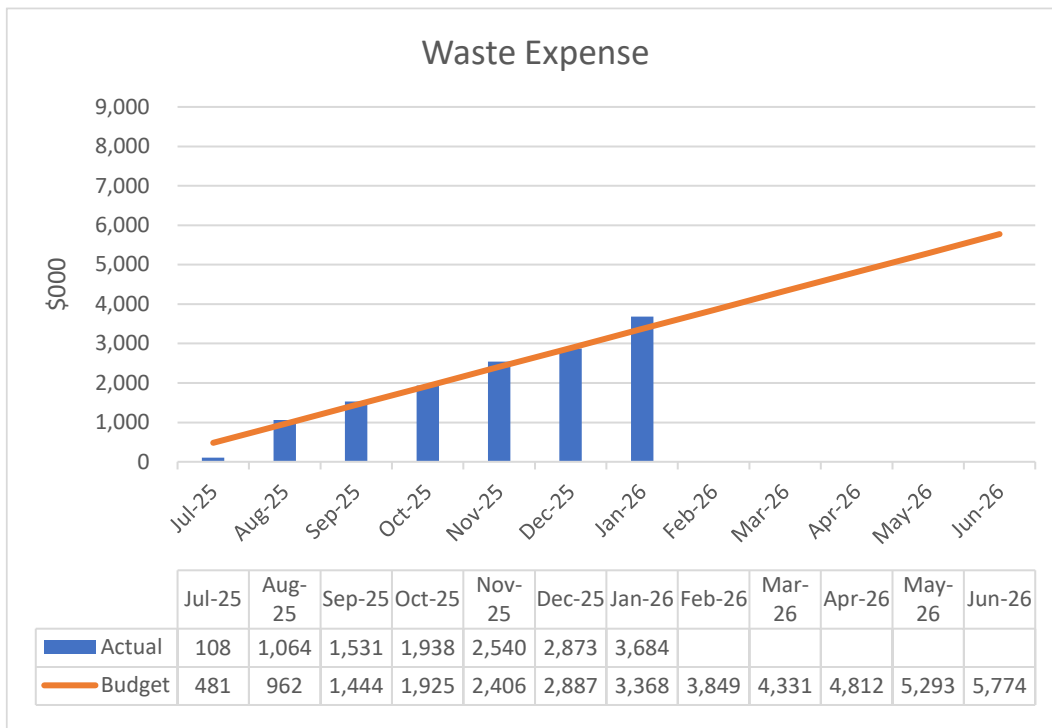
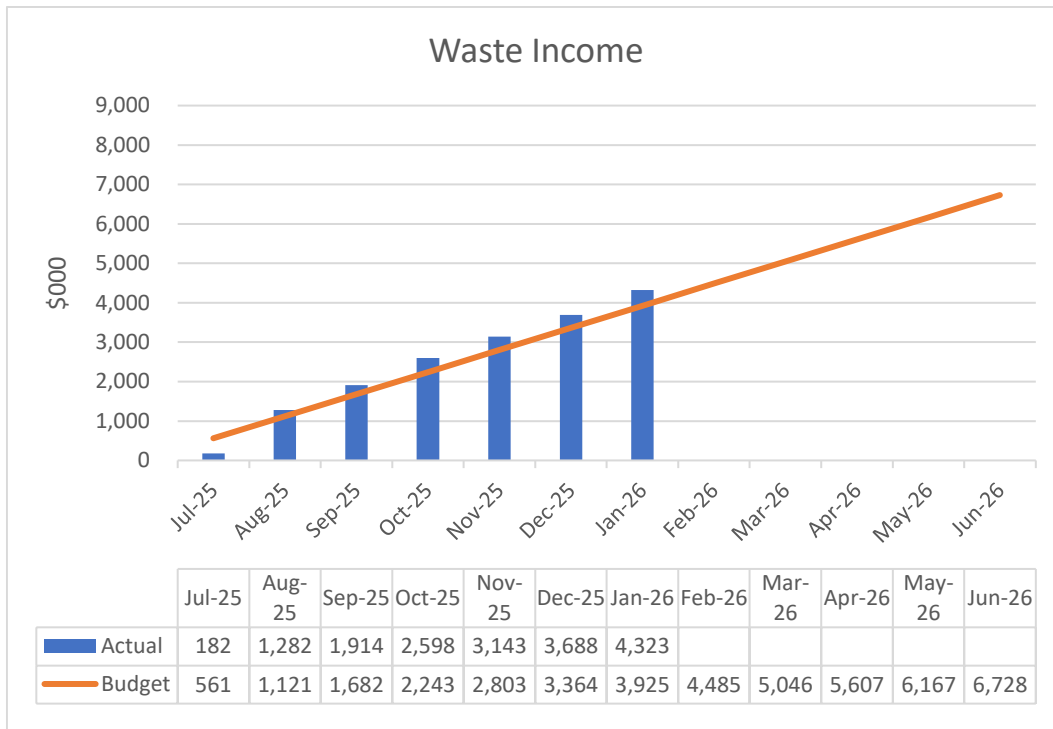
- 7.6 Waste minimisation activities over the summer period have focused improving systems for data collection and reporting to central government.

### **WASTE MANAGEMENT FINANCIAL UPDATE**

- 7.7 Most waste management operational expenditure is running close to budget. Waste income is currently tracking 10% above budget, and while transport and disposal costs are tracking above budget the net result is positive. This additional income is in part driven by flood response early in the year, but there are tentative signs that income is remaining stronger than forecast.







**8. Attachments / Tuhinga tāpiri**

Nil