

Date: Thursday 10 July 2025
Time: 9.30am
Meeting Room: Tasman Council Chamber
Venue: 189 Queen Street, Richmond

Operations Committee

Komiti Mahi

MINUTES ATTACHMENTS

ITEM	PAGE
ROC25-07-9 Tasman Pine Forests Limited	
Attachment 1 Tasman Pine Forest Ltd Presentation.....	2
ROC25-07-10 Downer Alliance Report Presentation	
Attachment 1 Downer Alliance Presentation.....	13
ROC25-07-3 Commerce Commission - Local Water Done Well Information Disclosure	
Attachment 1 Commerce Commission Presentation.....	26
ROC25-07-1 Information Services Update	
Attachment 1 Tasman GeoHUB Presentation.....	35

PUBLIC FORUM: Council provides the opportunity for public forum input at its ordinary meetings. The views and opinions expressed in public forum do not necessarily reflect the position of the Tasman District Council, Council officers or elected members

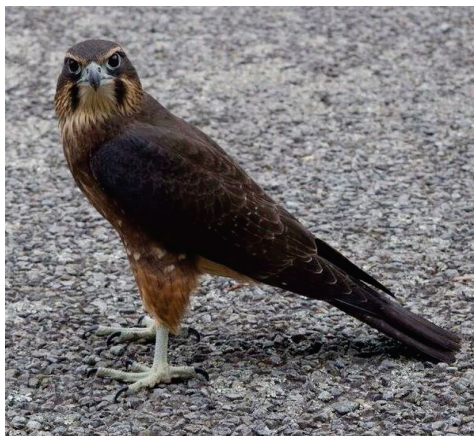
Tasman Pine Forests Overview

- Tasman Pine Forests Limited (TPFL) manages 36,600ha of forest land in the South Island Nelson/Tasman and Marlborough regions of NZ.
- TPFL was established in 2016 when Sumitomo Forestry (SFC) purchased 31,000ha of forest land from Hancock Forest Management, a timber investment company.
- This forest area was added to 5,000ha already owned by SFC.
- SFC has operated in the district since 1984, operating the MDF plant since 1986
- Forestry and wood processing contributed an estimated 184.3 million to Nelson Tasman GPD (2024)



Environmental

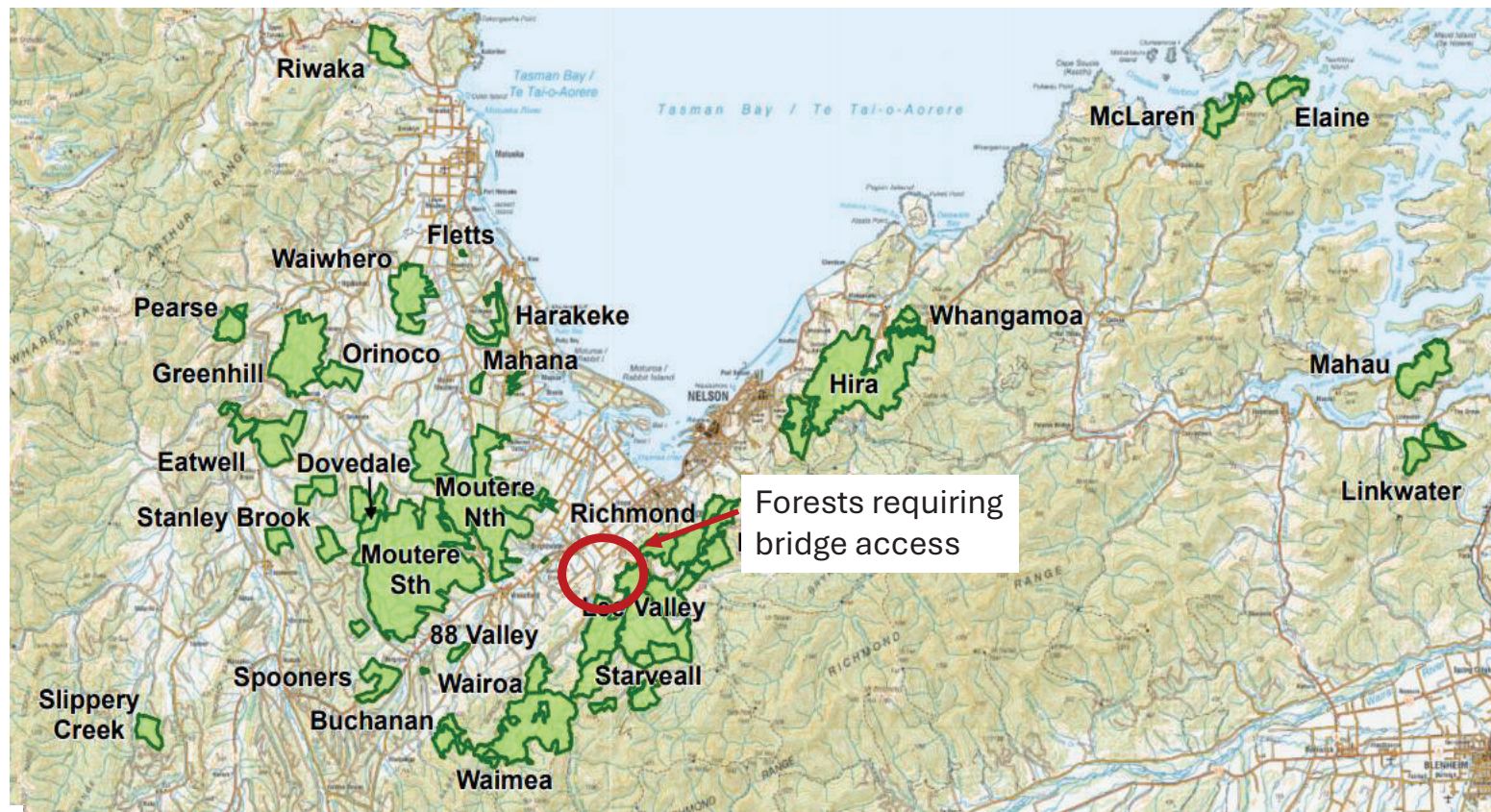
- TPFL are Forest Stewardship Certification (FSC) accredited and have a number of high conservation value areas within the estate which are home to protected native Falcons, Keas and Geckos.
- All sightings of these species and other rare threatened and endangered species are reported and management protocols are followed when discovered.
- All significant indigenous native forest areas within the estate are protected.



Sponsorship - Supporting Our Local Community



TPFL Forest Locations



The need for the bridge

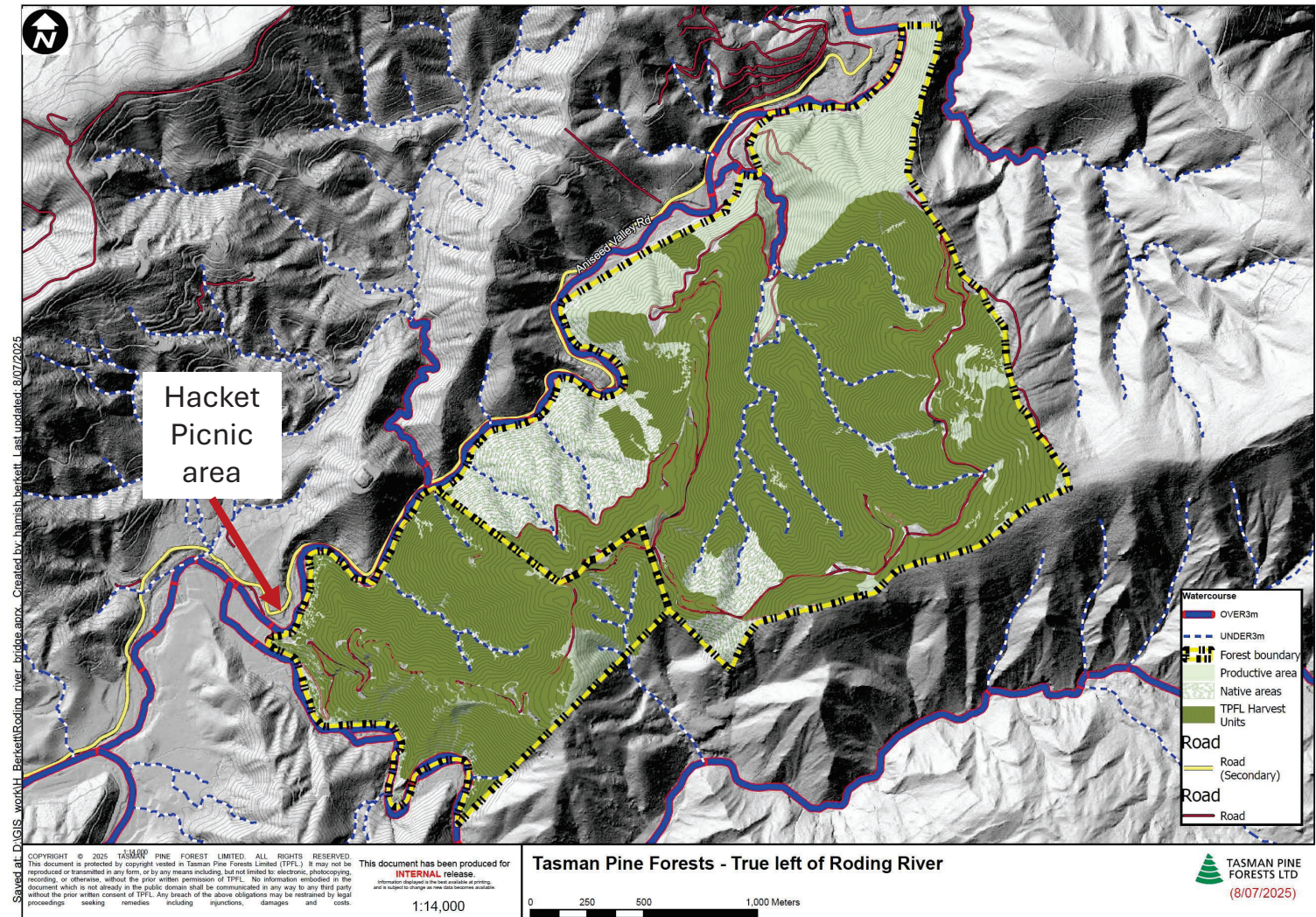
- Forest previously accessed via gravel bottomed ford.
 - No legal access to this crossing point
- National environmental standards have changed since previous harvesting operation that prevents the use of fords.
- Environmental impact of using fords for access and extraction of timber is significant
 - Access is required for logging and engineering equipment, crew/operators, log trucks.
- Health and safety risk accessing forests via fords - Only safe to use at very low river flows.



Archive photo: log truck crossing the Roding river

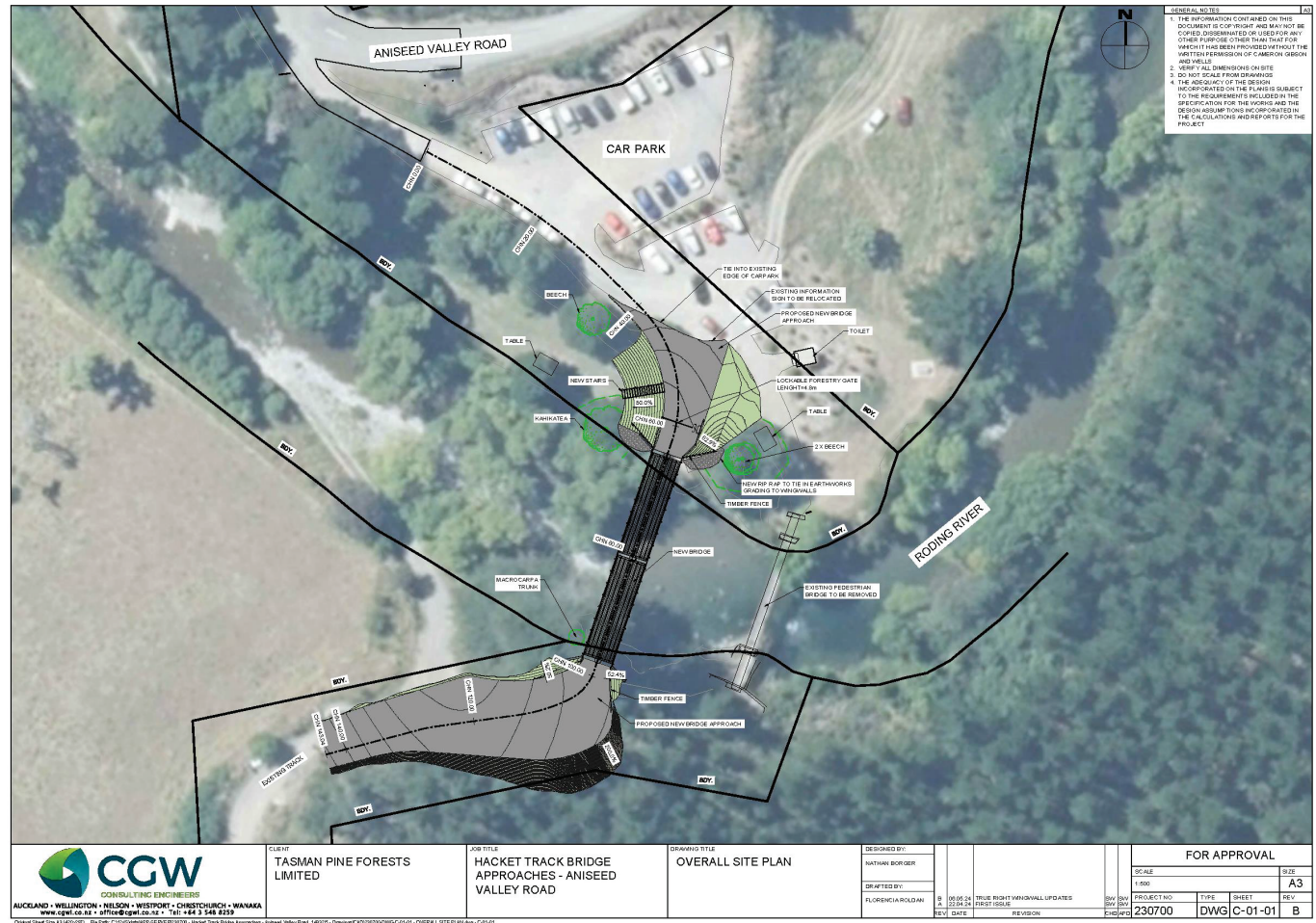
Area to be accessed by bridge

- 499 hectares of total area
- 406 hectares of second rotation productive forest
- 74 hectares of native/riparian
- remaining areas in roads landings etc
- 360 hectares of total area planned to be harvested at various stages over the next 8 years



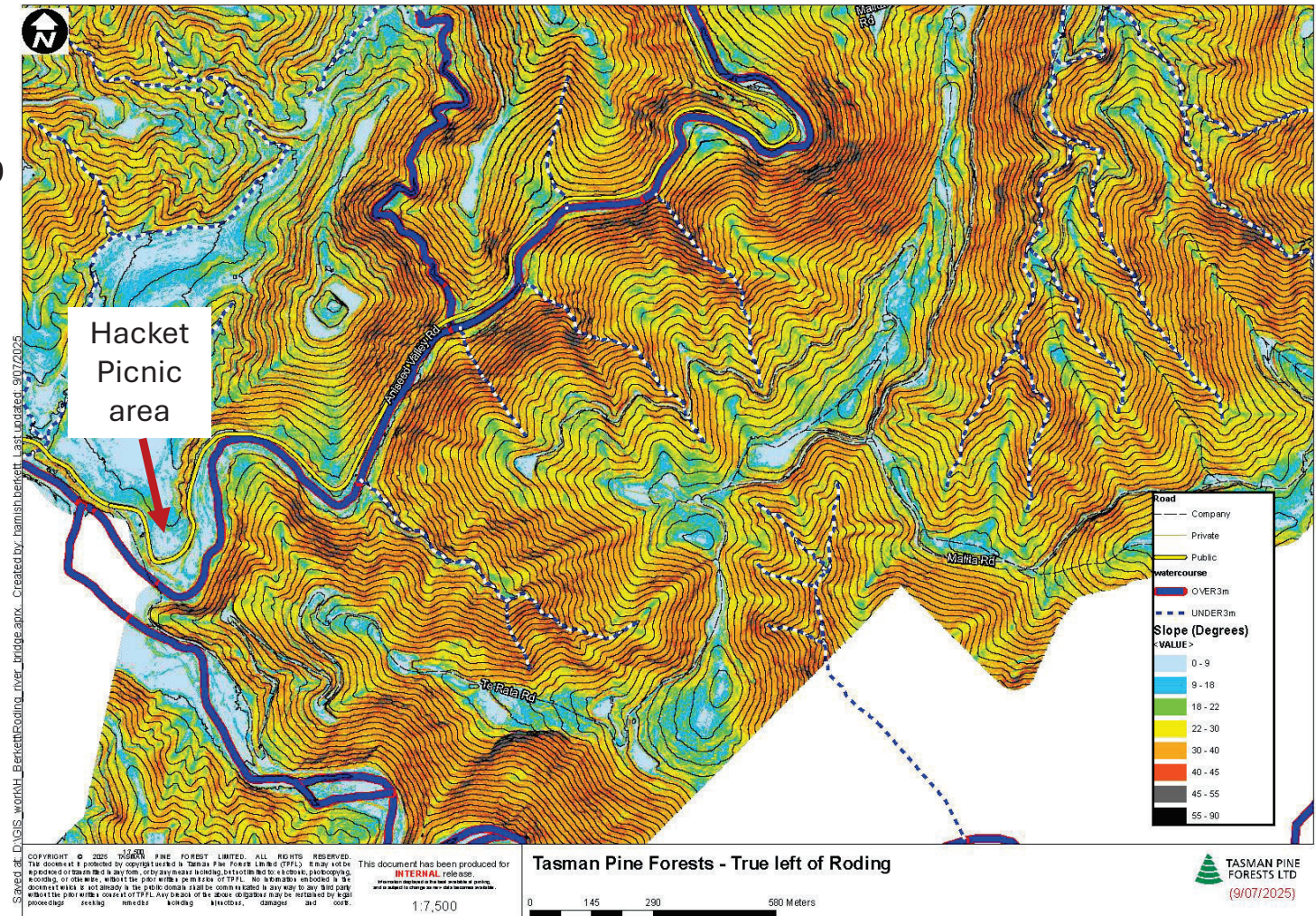
Proposed bridge location

- Due to topography and boundary restrictions the only feasible and legal location for a bridge is to exit at the Hackett picnic area.
- DOC have agreed that the foot bridge can remain in place



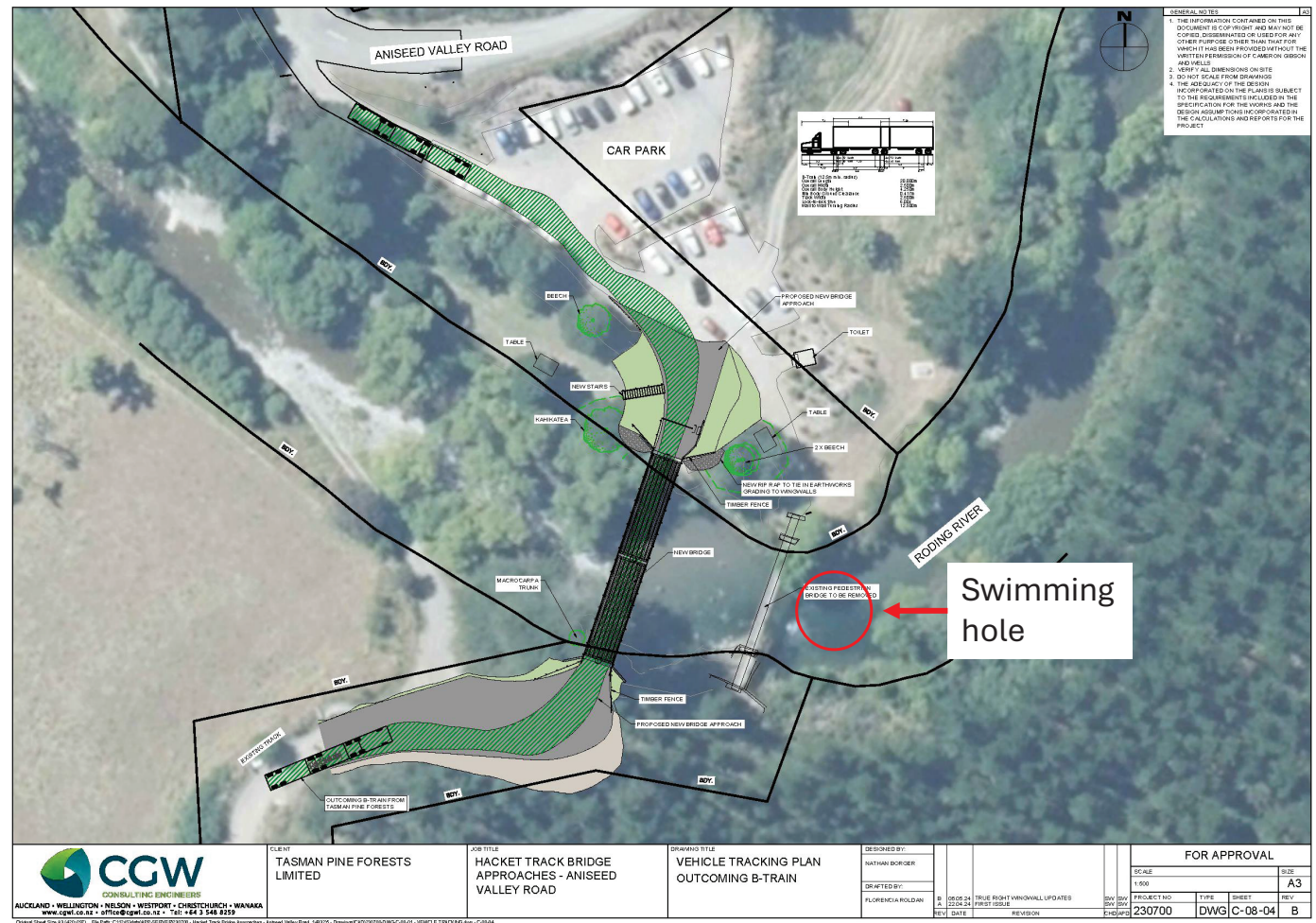
Topography

- Due to the steep nature of the forest it is not possible to engineer a road to a crossing point upstream (orange is the slope limit for safe engineering)



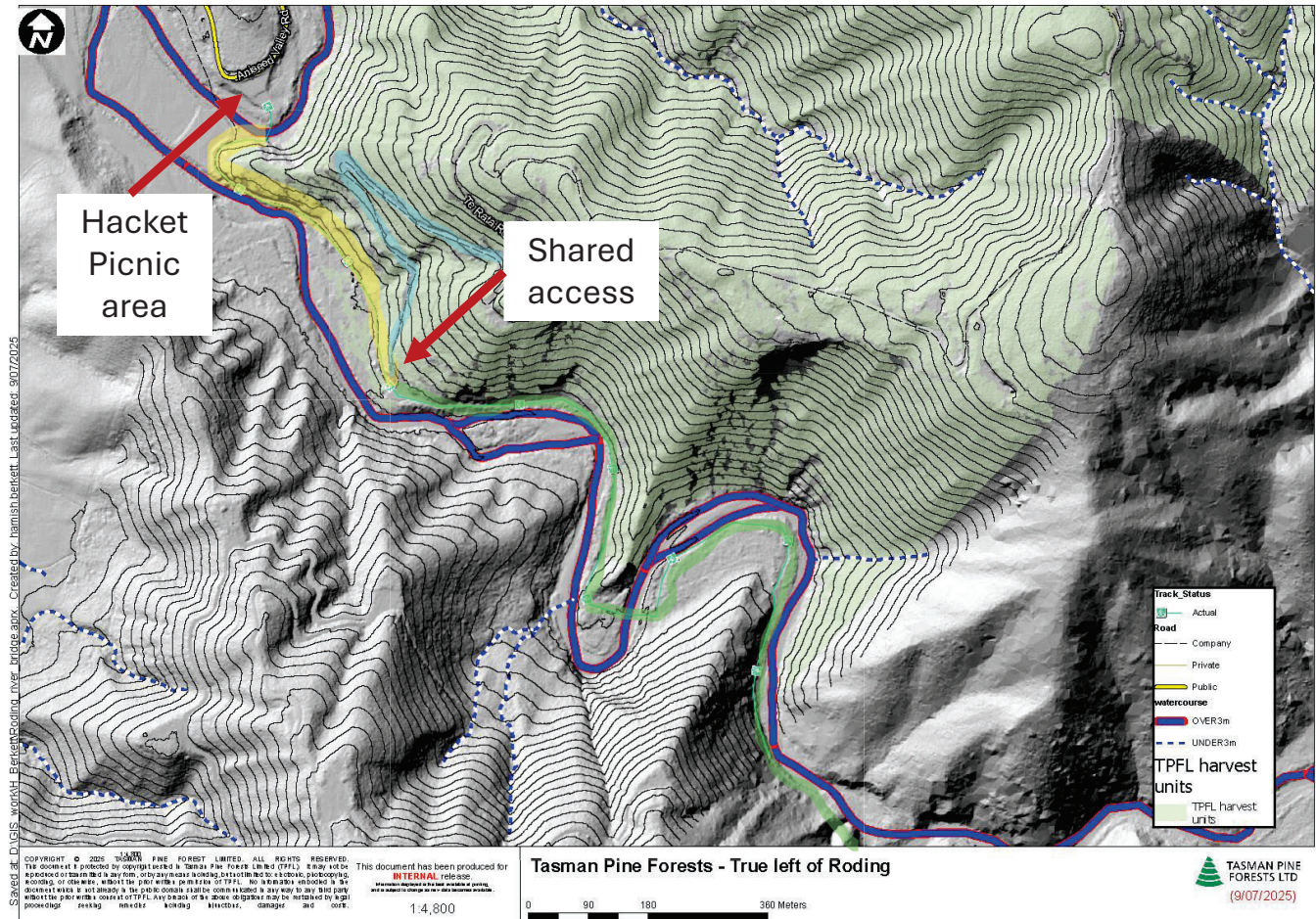
Impact mitigation

- Bridge location and truck movements designed to minimise impact on carpark and its users
 - Avoids impact on toilet facilities and significant natives (Kahikatea)
 - Doesn't impact the area used for swimming (upstream of footbridge)



Shared access

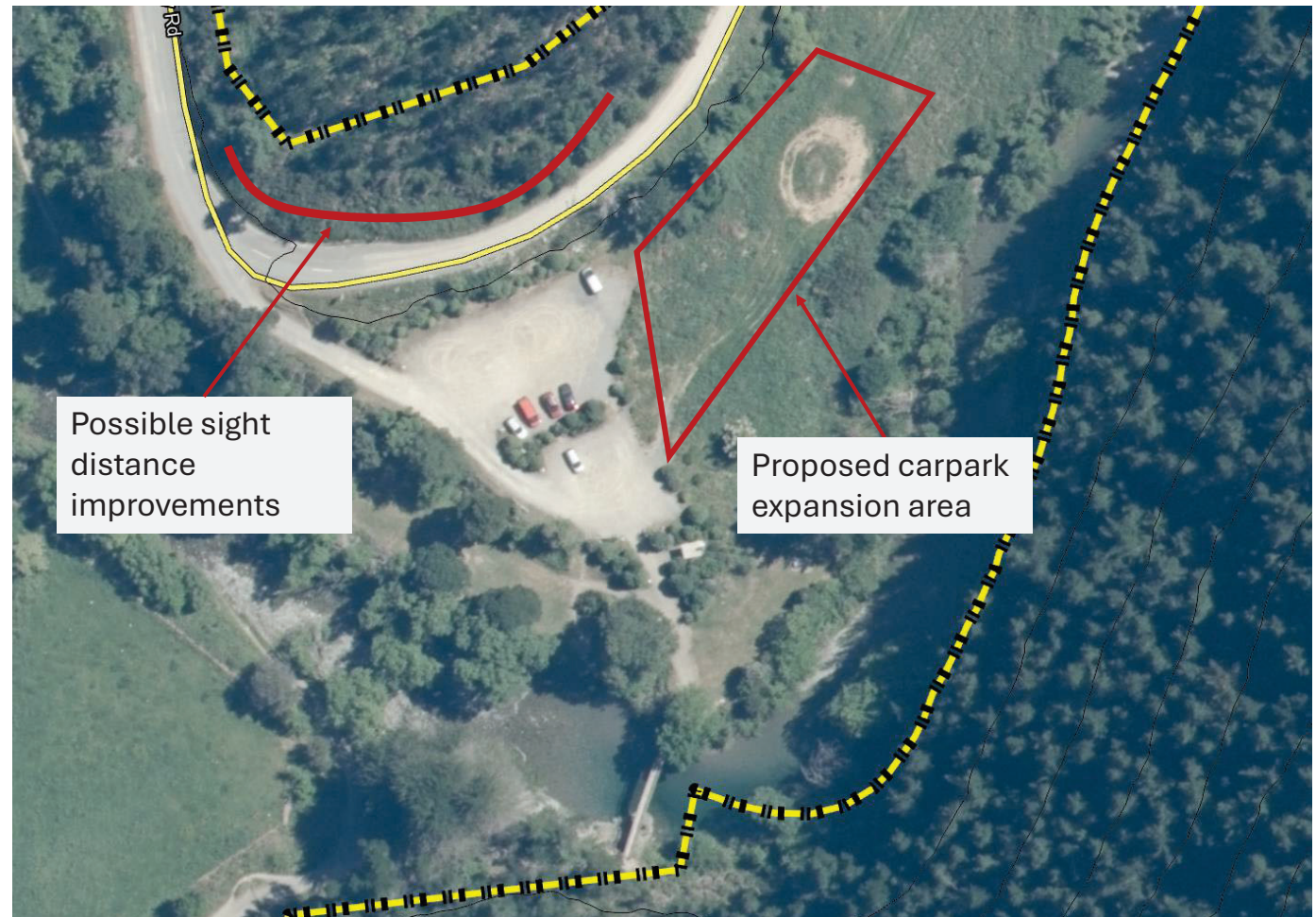
- Portion of the existing forest road is shared with the Hacket track.
 - This road was successfully and safely shared with the public during previous harvesting operations.
 - Access to the track will be closed/ restricted at times for a portion of the harvest when operational activities pose a health and safety risk (tree felling/tree extraction)



Enhancement options

Enhanced and expanded carpark area with works undertaken by Tasman Pine Forests

- Improve sight distances for vehicles entering and exiting carpark
- Significantly more carparking with option to segregated trucking road from public parking area

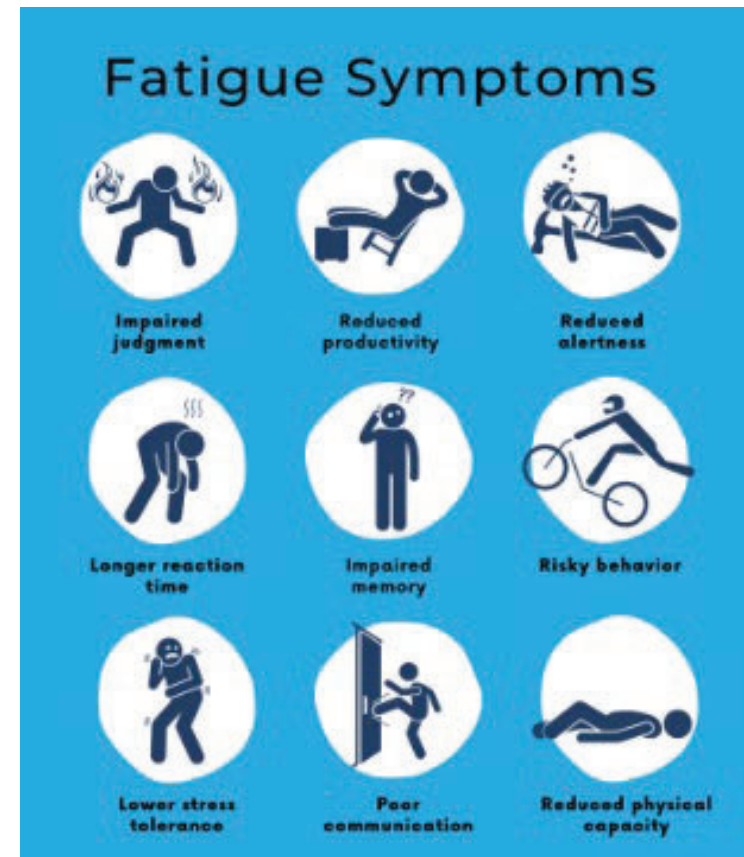




27 June Storm Event



Fatigue Management





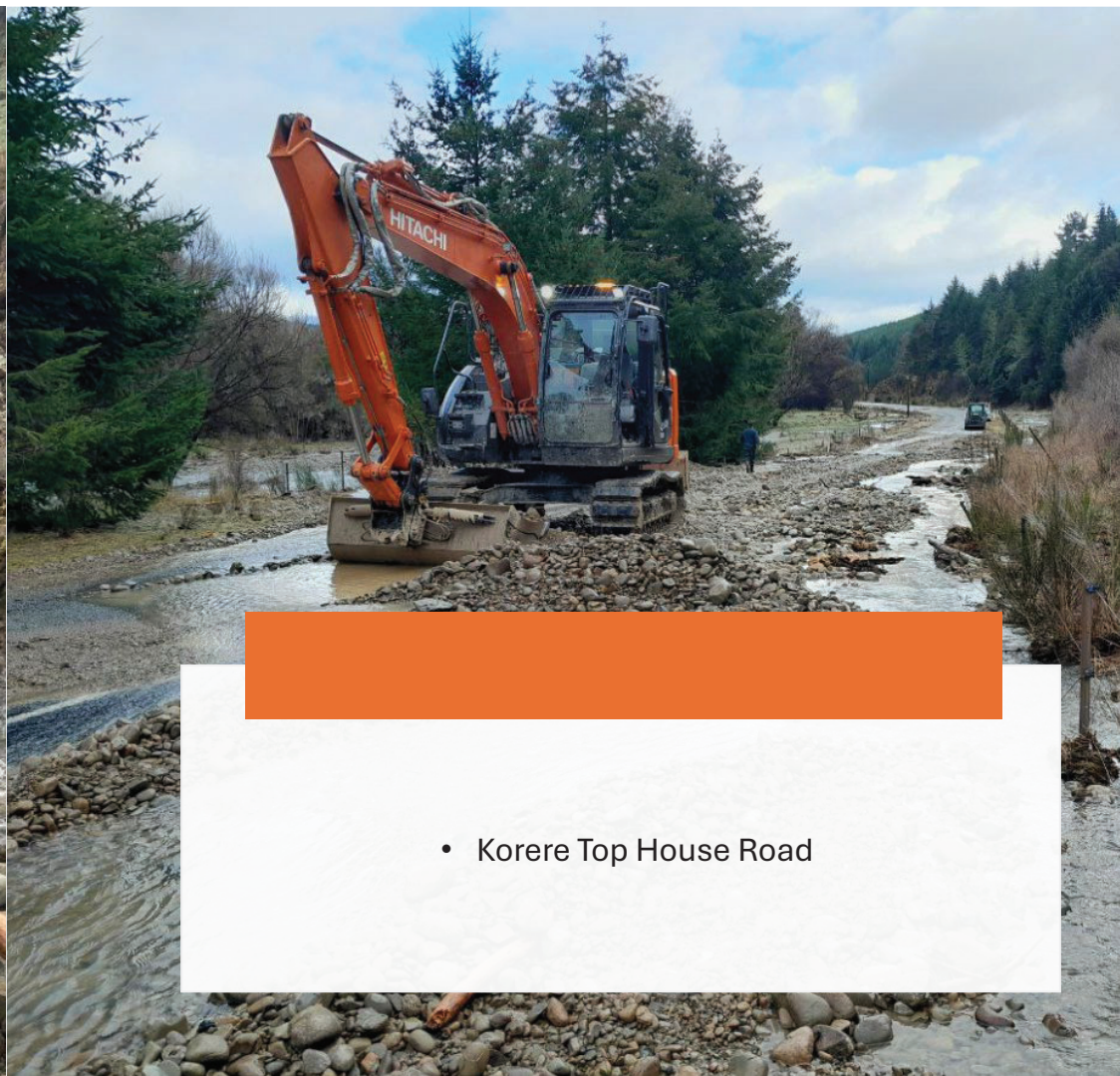
Gordons Bridge, Kerr Hill Road Washout to Open - 24 hours



Dovedale Road Scour



Hodgens Bridge, Dovedale Road 48 Hours



- Korere Top House Road



Rosedale Stream Bridge Slash Removal

Resource we have working

- Staff – 164
- Crew Sets - 21
- Light Vehicles – 61
- Heavy Trucks - 38
- Heavy Machinery - 21



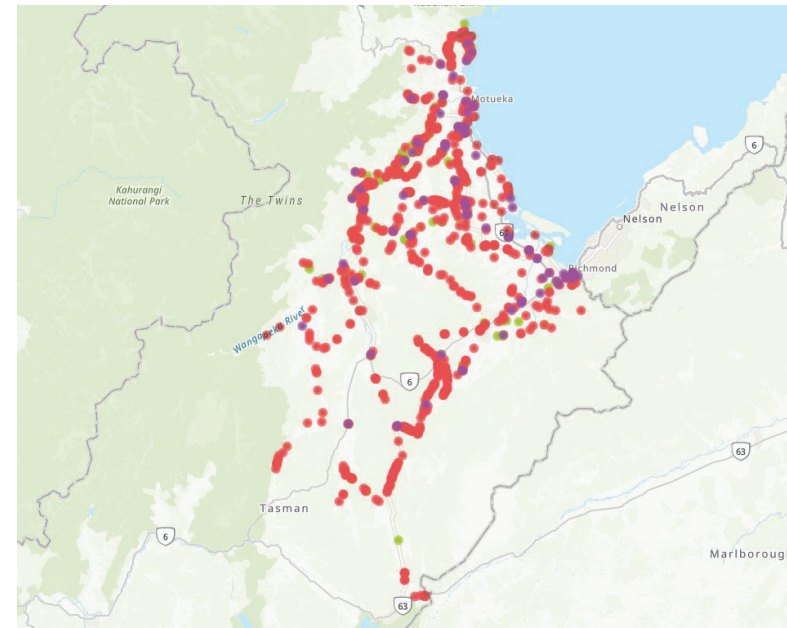


Road Closure List

Road	Road Status	Road Opening estimate
BATCHELOR FORD ROAD	Road Closed	19-Jul
DOVEDALE ROAD	Road Closed	11-Jul
EASTON LOOP	Road Closed	Not Storm Related
EDEN VALLEY ROAD	Road Closed	11-Jul
GARDEN VALLEY ROAD	Road Closed	9-Jul
GOLDEN HILLS ROAD	Road Closed	When river flow allows
HAYCOCK ROAD	Residents Only	TBC - in design
MOTUEKA RIVER WEST BANK ROAD	Road Closed	1-Aug
MOTUEKA RIVER WEST BANK ROAD	Road Closed	11-Jul
MOTUEKA RIVER WEST BANK ROAD	Road Closed	8-Aug
PIGEON VALLEY ROAD	Road Closed	11-Jul
PRETTY BRIDGE VALLEY ROAD	Residents Only	11-Jul
QUAIL VALLEY ROAD	Road Closed	25-Jul
SUNDAY CREEK ROAD	Road Closed	18-Jul
THORN ROAD	Road Closed	25-Jul
TRASS VALLEY ROAD	4WD Access only	TBC - in design
WANGAPEKA WEST BANK ROAD	4WD Access only	11-Jul

Fault Update

	Quantity Open	Quantity Complete	Units
Bridges			
Bridge Clear Debris/Waterway	42	10	ea
Bridge Foundation & Structural Damage	43	1	ea
Drainage			
SWC Scour/Blocked	9.7	0.2	km
Culverts & Catchpits Blocked	53	7	ea
Culverts Damaged	41	0	ea
Flanking/HS	3.7	0.2	km
Emergency Works & Environment			
Emergency Treefall	34	12	ea
Landslip (m3)	14592	5024	m3
Road Drop Out	59	0	ea
Clear Detritus (m)	3.2	29.7	km
Pavement Sealed			
Damaged Surface	16204	27	m2
Pavement Unsealed			
Unsealed Scour	57082	24960	m2



Questions?



Thank you

www.downergroup.com





Economic Regulation and Water

Tasman District Council

9 July 2025

The Commerce Commission

- We are an independent competition, fair trading, consumer credit and economic regulator.
- We have regulatory responsibilities in telecommunications, energy networks, transport fuel, the banking retail payment system, groceries, dairy, airports, and now water.
- The three main areas of work that the Commission undertakes are:
 - Promoting competition in markets throughout the economy
 - Influencing monopoly infrastructure performance for better essential services
 - Tackling harm, including from unfair trade practices and irresponsible lending.
- Our four main outcomes as an organisation are:
 - Stewardship: New Zealanders, including Māori, have trust and confidence in the regulatory systems we implement and enforce
 - Competitive Markets: New Zealanders receive the benefits of competition: greater value, innovation, productivity and choice.
 - Fair Trade: Consumers, including businesses, are informed, empowered and their interests are protected.
 - Essential Services: Consumers get quality and value from reliable essential services.



Our role in the wider water landscape

	Health outcomes	Environmental outcomes	Infrastructure sustainability and resilience outcomes	Financial Sustainability
Department of Internal Affairs	Policy, Stewardship, legislation – local government system / water services system. Requires and assesses Water Services Delivery Plans			
	Monitors Taumata Arowai			
Taumata Arowai	Drinking water regulations	Wastewater standards		
	Oversight of performance of wastewater and stormwater networks			
	Reviewing wastewater/source water risk management & drinking water safety plans			
Commerce Commission	Foundational Information Disclosure			
	Crown Monitor for Watercare			
	Enduring economic regulation regime (awaiting Local Government Water Services Bill)			
Ministry for the Environment	NES – sources of human drinking water	National Adaptation Plans		
		Emissions reduction plans		
		Freshwater management regulations (inc. NPS-FM)		
		Administers Environmental Reporting Act 2015		
Regional Councils	Regulator – source and receiving waters, and wastewater/ stormwater networks (in region)			
	Regional Plans			
Ministry of Health	Policy advice – public health matters relating to drinking water			
National Emergency Management Agency			Administers Civil Defence Emergency Management Act 2002	
Te Arawhiti	Policy lead on the Crown's Treaty of Waitangi obligations – including Treaty settlements			
Office of the Auditor General & Audit NZ	Annual auditing of public entities			

Governance expectations

Long term
stewardship

Asset
management

Investment

Assurance and
accountability

Meeting the
reasonable
expectations of
stakeholders

Ring fencing

Information flows



Information disclosure

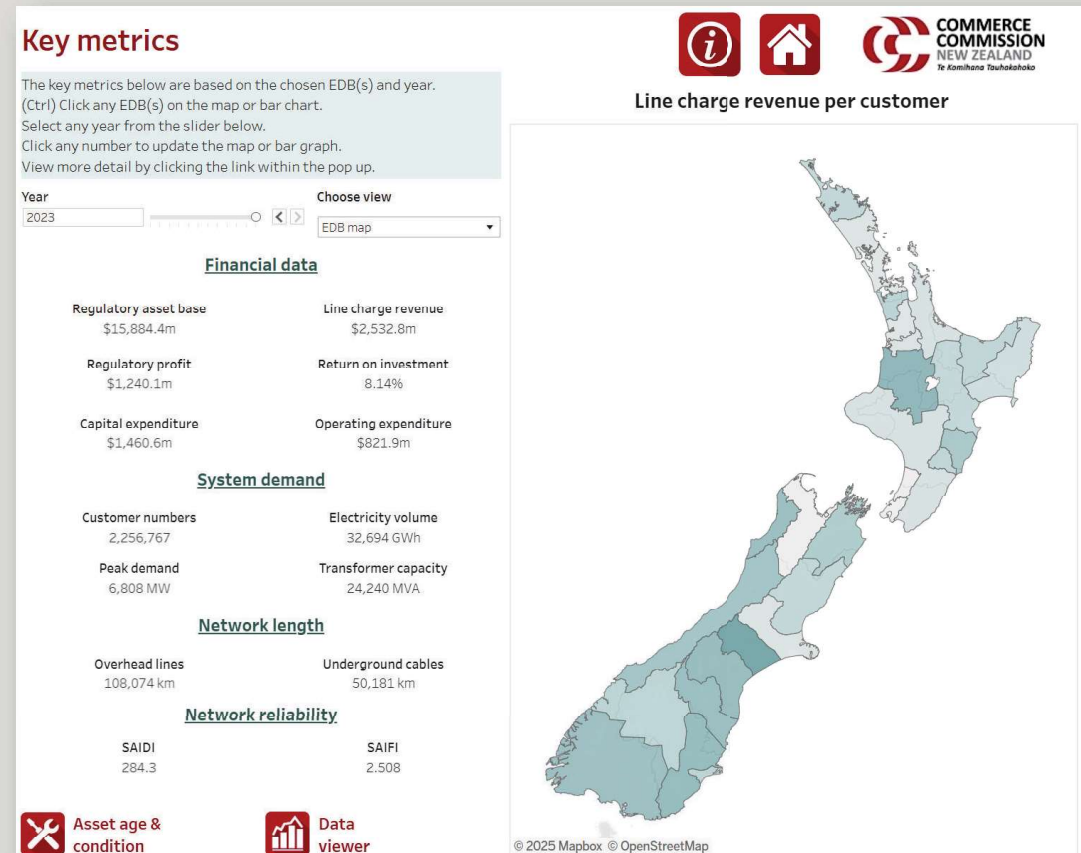
Local government water services suppliers will be required to publicly disclose information in a prescribed form set by the Commerce Commission.

- The Commission will first be focusing on information disclosure to require water services providers to publish robust information on planning, investment, and performance.
- We expect to set initial ID requirements around six months after the commencement of the Local Government Water Services Bill.
- The information required will be set by the us but is expected to initially include details about actual and forecast capital investment plans and expenditure, operating costs, revenue, tariffs/charges, financing plans, service quality, customer engagement and asset management. It is likely to link to our consumer protection regime.
- These requirements will build on information provided under Water Service Delivery Plans in 2025.
- We published an initial Discussion Document on ID in February 2025.



Data analysis

- We will carry out a range of analyses of this information, and summarise and publish this to help the public understand how their water organisation is performing individually and when compared to others, and to track changes over time.



Other proposed tools – economic regulation

Tool	Description	Timing
Revenue thresholds	Powers to set minimum and maximum revenue thresholds to issue clear expectations to providers regarding what level of revenue needs to be collected for investment in, and operating of, water infrastructure.	From 2026, when necessary.
Monitoring and enforcement of financial ringfence	The ability to monitor and enforce the requirement that water service revenue is spent on water services, including the ability to require a specific portion of revenue to be spent on a particular asset, expense category, project or programme.	After commencement, when necessary.
Quality regulation and/or performance requirements	The ability to set infrastructure and service quality standards and require water services providers to take certain actions to improve performance, such as to make certain types of investments, to consult or seek approval from the Commerce Commission on investment programmes, or to undertake cost-benefit analysis.	If required, after designation from 2026.
Price-quality regulation	Ability to set minimum and/or maximum prices that may be charged, and/or minimum and/or maximum revenues. Alongside quality and performance requirements.	If required, after designation from mid-2026.
Stormwater	Economic regulation applies to water and wastewater services initially. It could apply to stormwater services in the future.	If required, after designation.



Current consultation: Foundational ID

- The Government designated Wellington Water Limited as subject to foundational ID until the full economic regulation regime is in place mid-2026.
- Foundational ID is a light-handed form of economic regulation, where the Commission sets disclosure requirements and monitors performance.
- Our proposed disclosures build on the information Wellington Water already prepares, with targeted additional disclosures where needed.
- Enduring ID is expected to be in place for the long term, and it is likely to be more expansive.
- We are currently taking cross-submissions on a draft determination for Wellington Water's foundational ID.





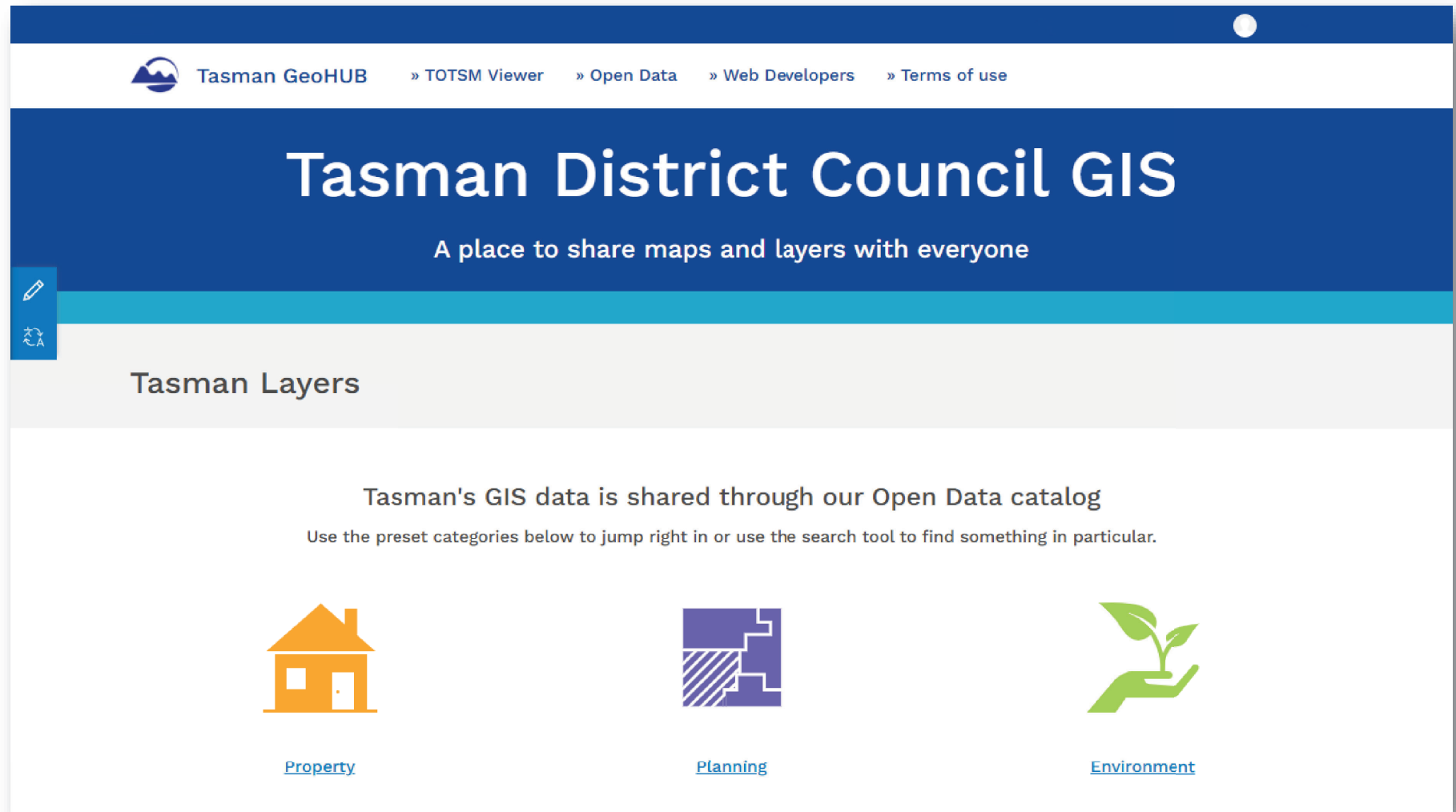
—

Please send through any questions to
wai@comcom.govt.nz, or let us know if you want to
be included in our mailing list.

Tasman GeoHUB

A place to share maps and
layers with everyone





Tasman GeoHUB » TOTSM Viewer » Open Data » Web Developers » Terms of use


Tasman District Council GIS

A place to share maps and layers with everyone


Tasman Layers

Tasman's GIS data is shared through our Open Data catalog


Use the preset categories below to jump right in or use the search tool to find something in particular.



[Property](#)



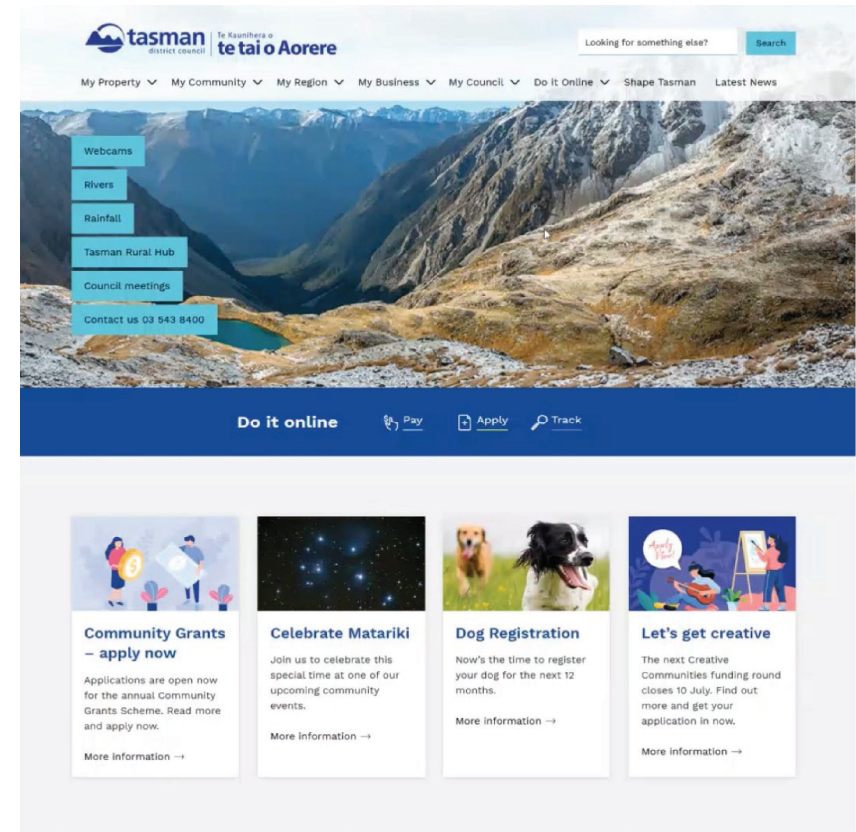
[Planning](#)



[Environment](#)

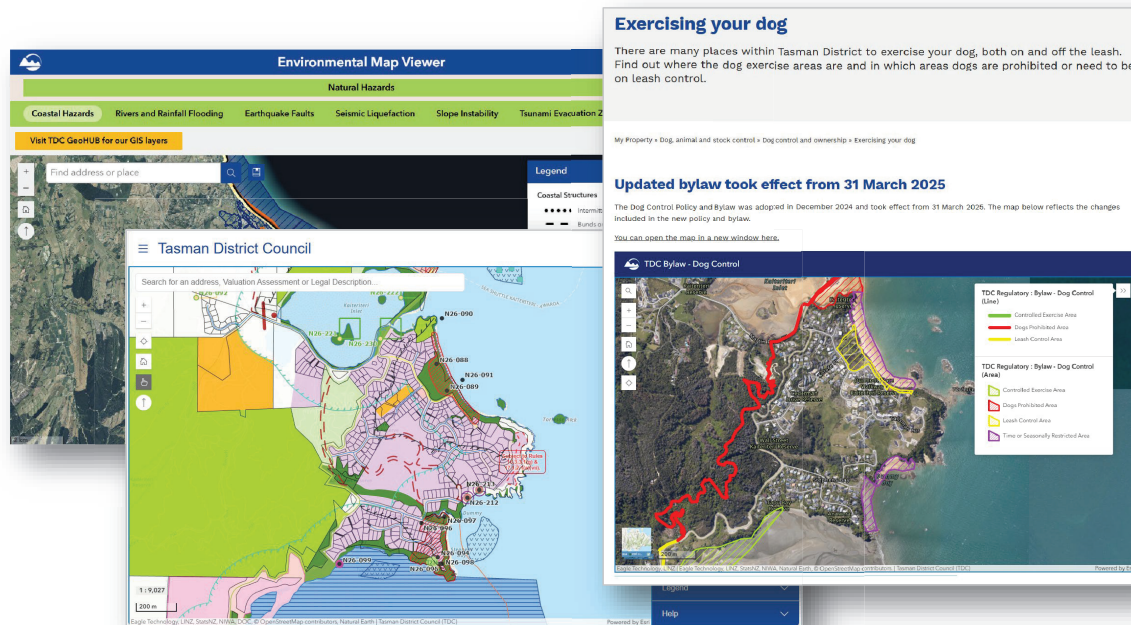
What is a GeoHUB?

- **Catalog** to share and discover GIS data
- **Curated** to ensure quality and relevant content
- **Trusted GIS site**



Thriving resilient 

Why we need GeoHUB?



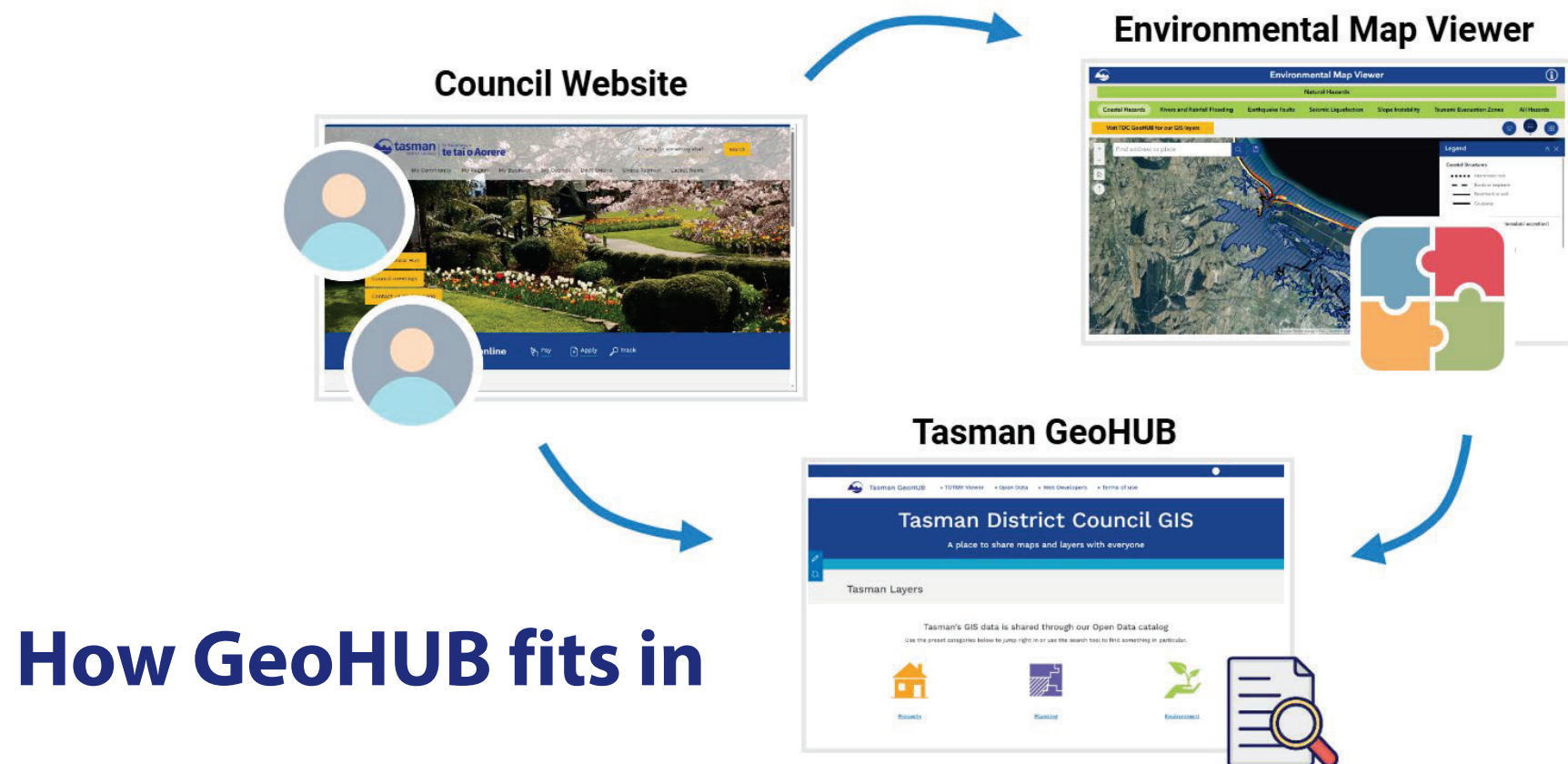
Key Projects

- Natural Hazards
- Freshwater Farm Plans
- TRMP ePlan
- Dog Control Bylaw

Similar requirements

- Webmaps
- Sharing the data

Thriving resilient 

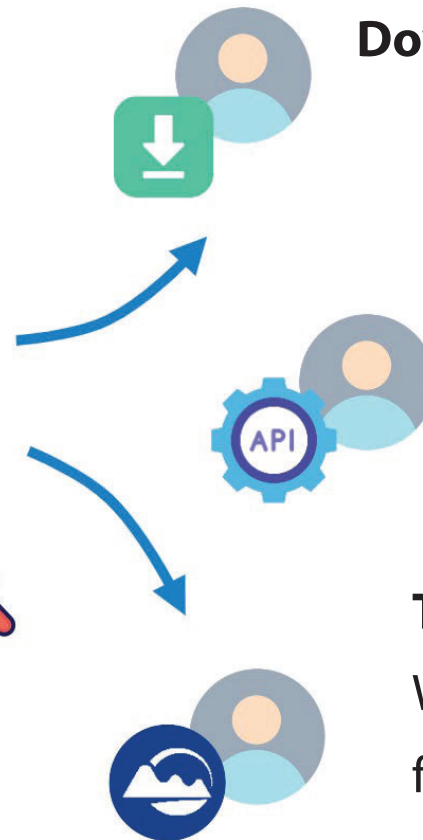


Thriving resilient 

What can it do?



Search by
Name or Category



Download various formats

“Live” feed of data for
building bespoke web maps

That includes us!

We can use these same feeds
for our TDC website maps

... walking the walk

Exercising your dog

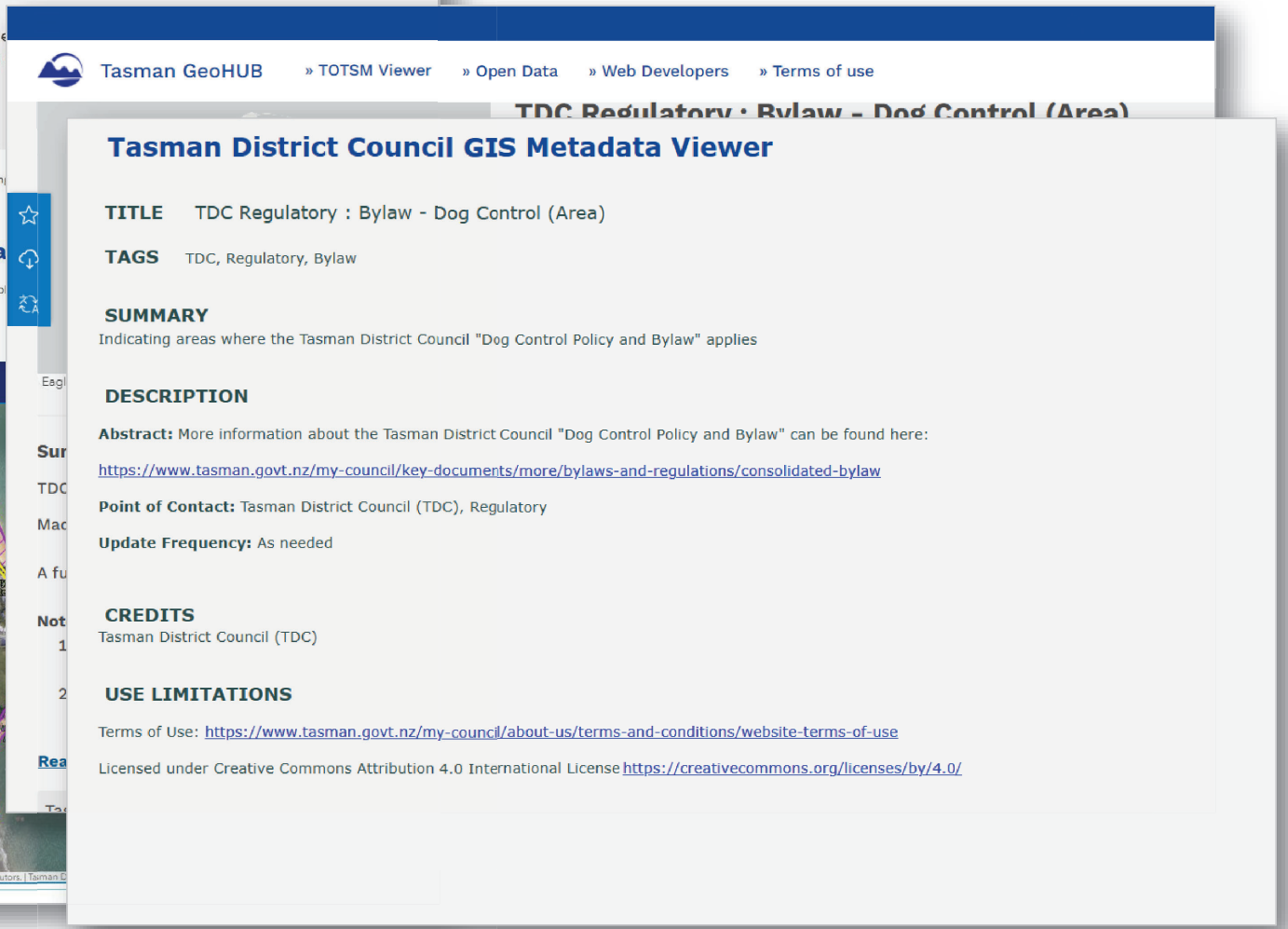
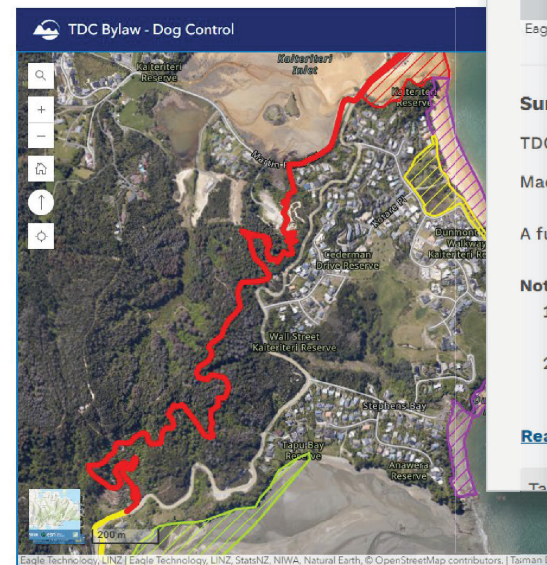
There are many places within Tasman District to exercise your dog. Find out where the dog exercise areas are and in which areas your dog must be on leash control.

[My Property](#) » [Dog, animal and stock control](#) » [Dog control and ownership](#) » [Exercising](#)

Updated bylaw took effect from 31 Ma

The Dog Control Policy and Bylaw was adopted in December 2024 and tool included in the new policy and bylaw.

You can open the map in a new window here.



Collaborative Relationships

Reinforce specialist knowledge with new tools

- Environmental Sciences, Mirka Parker, Alastair Clement
- Environmental Planning, Barry Johnson
- Regulatory, Shannon Green

Thriving resilient 

Good quality processes and guidelines

Letting those that know the most about the data care for it through the processes we've put in place

- Well documented guidelines
- Ongoing care and ownership

Thriving resilient 

Processes and guidelines cont...

Hot topics

- Governance
- Ownership (internal)
- Assessing content against our Policies, especially Privacy
- GIS Documentation Guideline , i.e. metadata

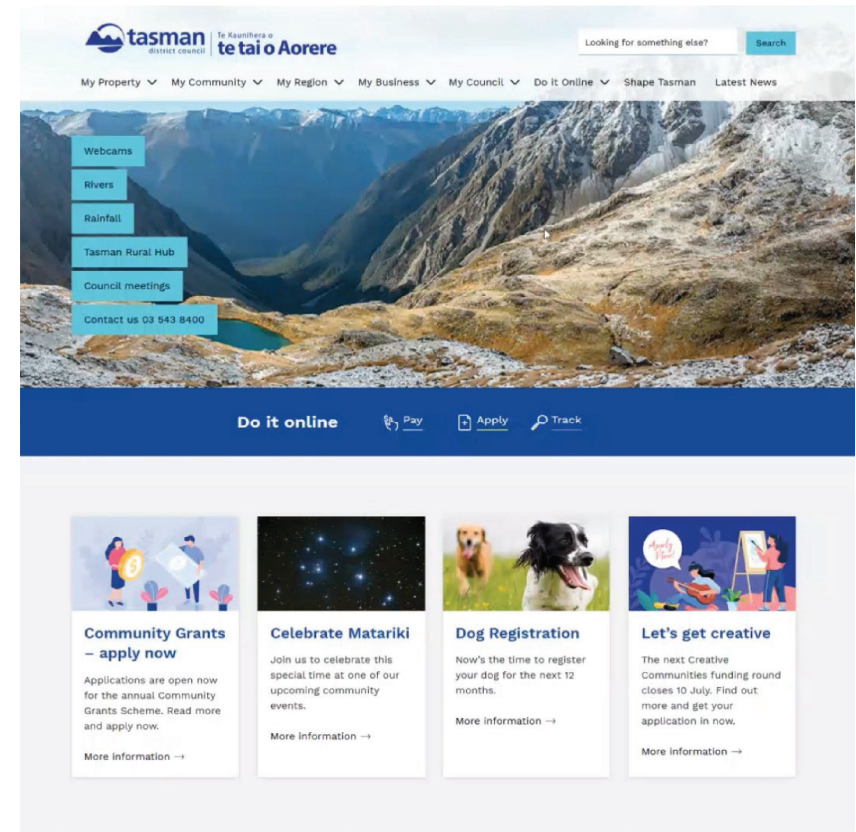
Thriving resilient 

Try it out...

<https://geohub.tasman.govt.nz>

Or through our TDC website

- My Region
- Maps
- > Tasman GeoHUB



Thriving resilient 

Thank you

Melissa Brooks

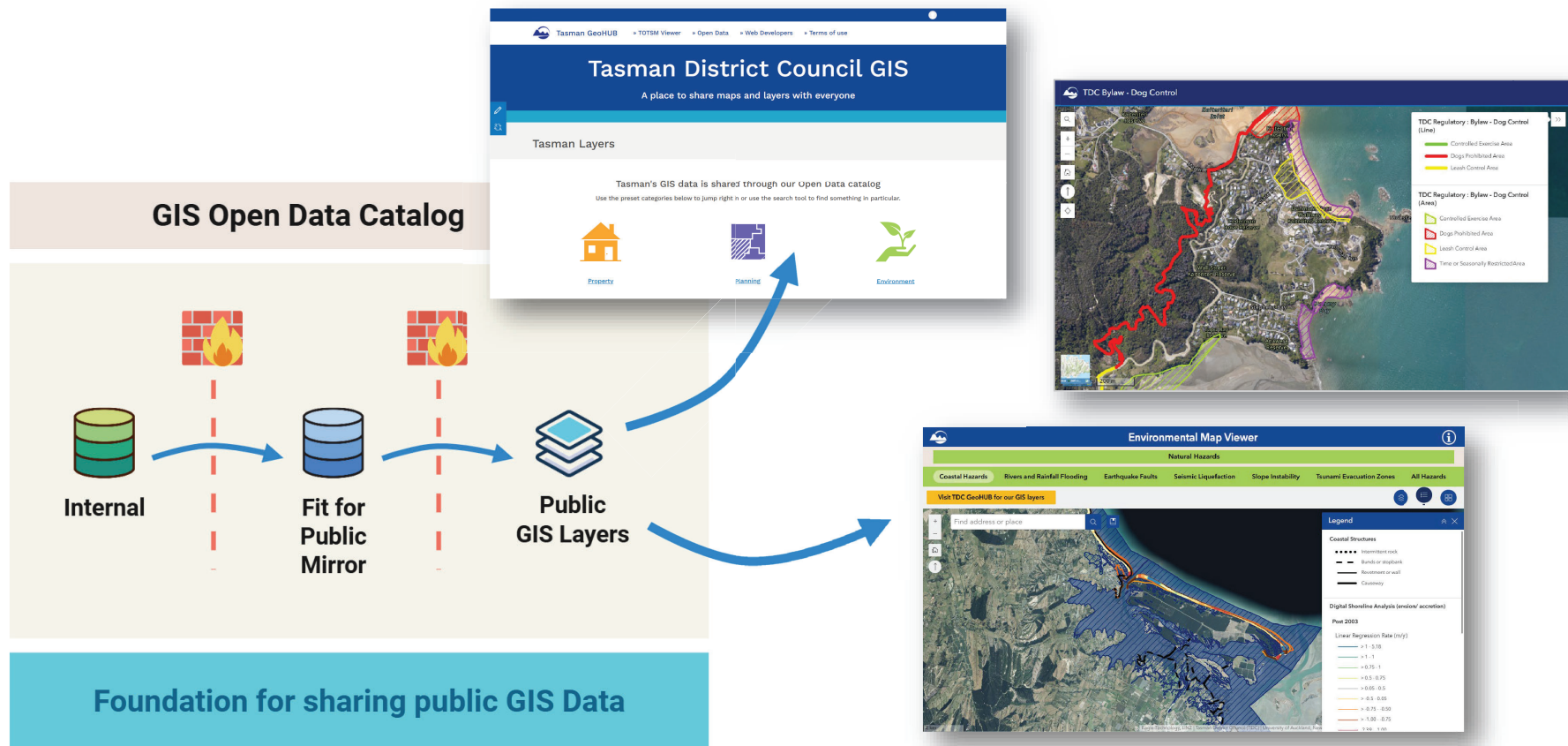
Terry O'Donnell

*Geospatial Systems
Council Operations*



12

Thriving resilient 



Thriving resilient

GIS Metadata Guideline

- Industry best practices
- Implemented across New Plymouth District Council
- Adopted by Waimakariri District Council
- Adapted for Tasman District Council
- Flexible as Council's needs change

TDC GIS Metadata Guideline

Introduction

This page contains the required elements and content for a custom metadata guideline. Metadata needs to be robust, repeatable and carried forward for future use and standardisation. This section details the decisions made for feature class metadata. All corporate feature classes stored in SQL must have metadata in order to be published and shared.

Metadata Elements

Metadata Type	Metadata Standard	Metadata Element	Data Type	Information	Notes	Required (by Org)
Item Description	ISO 19115:2003	Title	CharacterString	The name by which the cited resource is known.	In human terms	Yes
Item Description	ArcGIS metadata	Tags	CharacterString	A set of terms that can be used by ArcGIS to search for the resource. Terms should be provided as a comma-separated list. These terms are not derived from a thesaurus.	[Your Org Name - Acronym], [List of 'Topics' from ISO 19115 standard]	Yes
Item Description	ISO 19115	Summary (Purpose)	CharacterString	A summary of the intentions with which the resource was developed. In metadata standards this information is known as the purpose. ArcGIS Online refers to this information as the resource's summary.	required	Yes
Item Description	ISO 19115	Description (Abstract)	CharacterString	A brief narrative of the resource's content. In metadata standards this information is known as the abstract. ArcGIS Online refers to this information as the resource's description. For geoprocessing tools this information is referred to as the tool's summary. The GIS team have decided to consolidate the following ISO headings into the Item Description. As follows:	Abstract: required Point of Contact: [Your Organisation (acronym in brackets), Role] Update Frequency: required (See below for valid values) Lineage: optional Field Metadata: optional [Field Name] [Brief explanation] [Field Name] [Brief explanation]	Yes
Item Description *	ISO 19115	Credits	CharacterString	A recognition of those who created or contributed to the resource	[Your Organisation – Full Name (acronym in brackets)], [plus any other contributors]	Yes
Item Description	ISO 19115:2003	Use Limitations	CharacterString	Describes limitations	Terms of Use [Your Terms of Use Link Here] Licensed under Creative Commons Attribution 4.0 International License https://creativecommons.org/licenses/by/4.0/	Yes

* This auto-populates the "Resource Details - Credit" attribute.. do not clear the Resource Details cell or it will clear the Item Description cell also

Update Frequency - Choose one

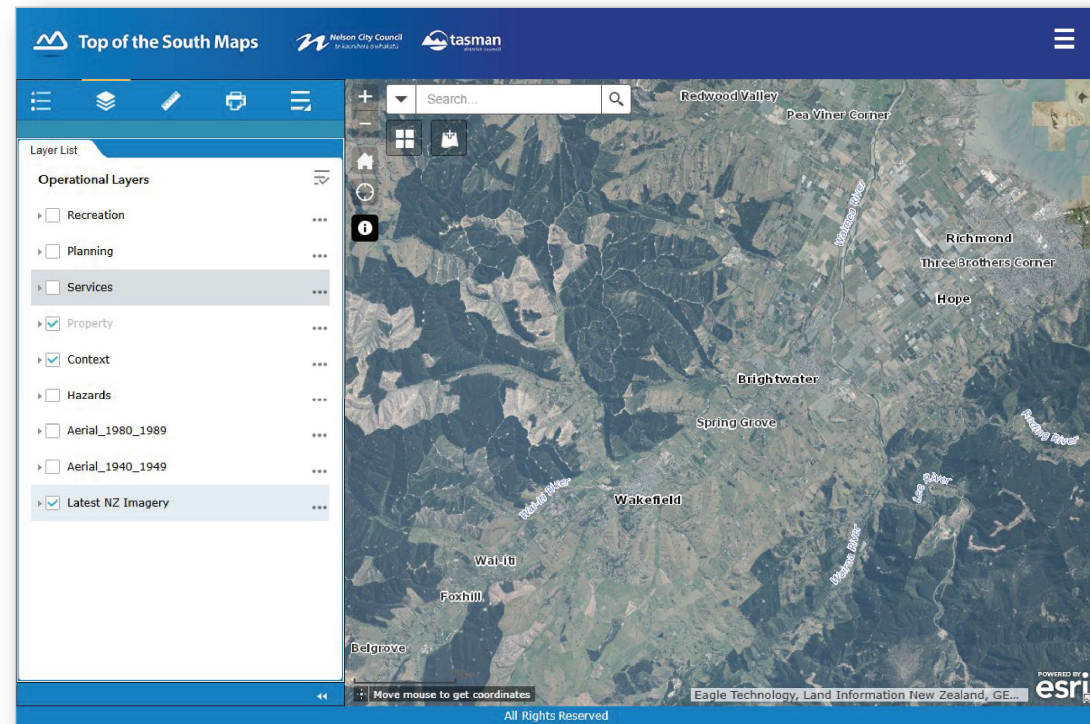
(valid values taken from ISO 8601)

Continual, Daily, Weekly, Fortnightly, Monthly, Quarterly, Biannually, Annually, As needed, Irregular, Not planned, Unknown

Thriving resilient 

TOTSM

- Supports layers where BOTH Nelson and Tasman agree to show the same topic
- Aging Technology
- Under review



Thriving resilient 