

**Date:** Thursday 3 April 2025  
**Time:** 9.30am  
**Meeting Room:** Tasman Council Chamber  
**Venue:** 189 Queen Street, Richmond

---

## Strategy and Policy Committee

### Komiti Rautaki me te Kaupapahere

# MINUTES ATTACHMENTS

---

| <b>ITEM</b>   | <b>PAGE</b> |
|---|-------------|
| RSPC25-04-3 Notification of the draft Lakes-Murchison Ward RMP and draft RMP section on Baigents Bush Scenic Reserve, Pigeon Valley |             |
| Attachment 1 Tabled Document - Tapawera Community Hub - Option 3.....   | 2           |

PUBLIC FORUM: Council provides the opportunity for public forum input at its ordinary meetings. The views and opinions expressed in public forum do not necessarily reflect the position of the Tasman District Council, Council officers or elected members

---

**5.3.5 TAPAWERA MEMORIAL PARK RECREATION RESERVE**

**Issues and Options**

....

The Council’s Long Term Plan 2024-2034 allocated budget for provision of a Tapawera Community Hub.

After considering several options for creating the hub, including the potential to repurpose and expand existing buildings, the Council is proposing to build the new hub at either of these two locations at Tapawera Memorial Park:

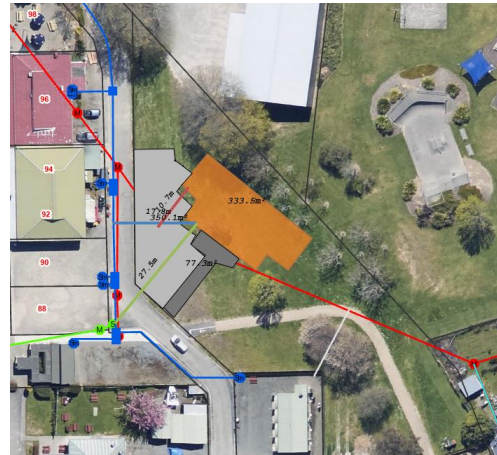
- Option 1: on parcel (b) near the shearing stand building, i.e. on the Recreation Reserve; or
- Option 2: on parcel (a) (the ex-Railway land), between Matai Crescent and the existing rugby clubrooms.

The two proposed locations for the new hub at Tapawera Memorial Park are shown in the following image:



On this image, the two options proposed for locating the new hub at Tapawera Memorial Park are shown in light brown, associated car parking areas are indicated in light grey, and footpaths shown as dark grey.

Another site on parcel (a) (the ex-Railway land), north of Matai Crescent near the Four Square, ~~was also considered as a~~ is another potential site for the new hub (Option 3).



Option 3: this potential site is located on parcel (a) (the ex-Railway land), north of Matai Crescent and east of the Four Square.

~~but~~ Generally discounted due to limited access and visibility of that site, Option 3 is not the Council’s preferred location for the hub, but we’d like to know your thoughts on all three options.

The Tapawera Community Hub could include spaces for:

- community use, community functions and meetings
- health services for the community
- private spaces for support services
- informal gathering spaces for youth and the elderly
- reception hub area and wifi facilities and information areas (visitor centre)
- a commercial grade kitchen, to support meeting and function spaces.

Accessible parking areas and green space will also be provided.

Options still open for consideration are the potential for the hub to include space for groups/organisations that provide not-for-profit services (e.g. educational training courses; the Tapawera Op Shop, which raises funds for grants for local community sports teams, gardens and events).

**KEY CONSULTATION QUESTIONS:**

Q2 Do you support or oppose the proposal to build the new Tapawera Community Hub at Tapawera Memorial Park?

**Support**  **Oppose**

Please explain your reasons why.

If you support this proposal:

Q2(a) Which location at Tapawera Memorial Park would you prefer the new Tapawera Community Hub be constructed on?

**Option 1:** near the shearing stand; **or**

**Option 2:** on ex-Railway land between Matai Crescent and the existing rugby clubrooms; **or**

**Option 3:** on ex-Railway land north of Matai Crescent and east of the Four Square.

Q2(b) Do you support or oppose the proposal for not-for-profit groups/organisations (e.g. an Op Shop) to operate from the new Tapawera Community Hub?

**Support**  **Oppose**

Please explain your reasons why.

**POLICIES**

....